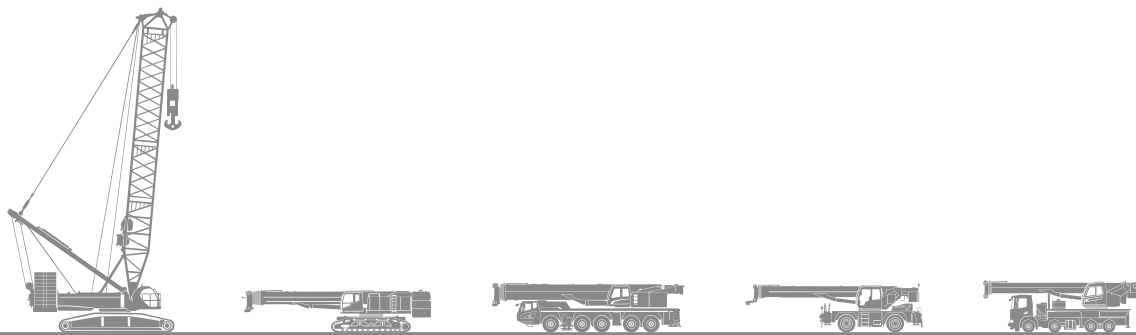


SANY[®]

SANY CRANE EUROPE



**QUALITY CHANGES
THE WORLD**



CONTENTS

LATTICE BOOM CRAWLER CRANE

- SCE600A
- SCE1000A
- SCE1350A
- SCE1350A-EV
- SCE2600A
- SCE4000A-1
- SCE4800A
- SCE8000A
- SCC12500A
- SCE22000A

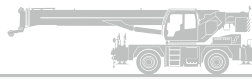
TELESCOPIC CRAWLER CRANE

- SCE600TB
- SCE800TB
- SCE800TB-EV
- SCE1300TB



**ALL-TERRAIN
CRANE**

- SAC600E
- SAC1200E
- SAC2500E



**ROUGH-TERRAIN
CRANE**

- SRE450
- SRE600
- SRE900
- SRE1100



**TRUCK-MOUNTED
CRANE**

- SPC500E

■ LATTICE BOOM CRAWLER CRANE

SCE600A

Compact and efficient



60 t



145 kW / 2000 rpm



16.4 t



4.46 m / 4.39 m



■ LATTICE BOOM CRAWLER CRANE

SCE600A

- Cummins engine of low fuel consumption and low noise emission, auto idling
- Ground bearing pressure display, auto forward steering and traveling, independent monitor
- Basic machine with crawlers and boom base is 3.0 m wide, satisfying global transport standard
- Ø22 mm hoist wire rope with strong line pull, optional main and aux. freefall available

ENGINE

Cummins
B6.7-195 Stage V

MAIN PUMP

Kawasaki

MAIN VALVE

Kawasaki

REDUCER

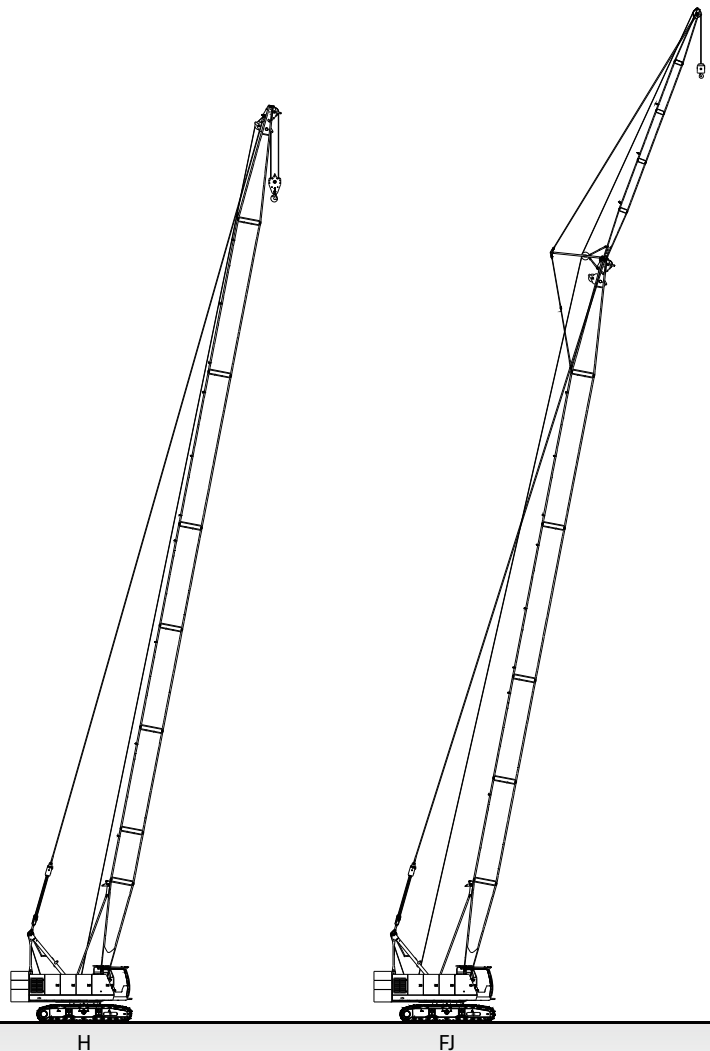
Rexroth / O&K

H

Max. lifting capacity: **60 t**
Max. lifting moment: **222 t·m**
Boom length: **13 m ~ 52 m**

FJ

Max. lifting capacity: **7 t**
Jib length: **6.1 m ~ 15.25 m**
Longest boom + longest jib: **43 m + 15.25 m**



■ LATTICE BOOM CRAWLER CRANE

SCE1000A

Adaptable and versatile



100 t



242 kW / 1800 rpm



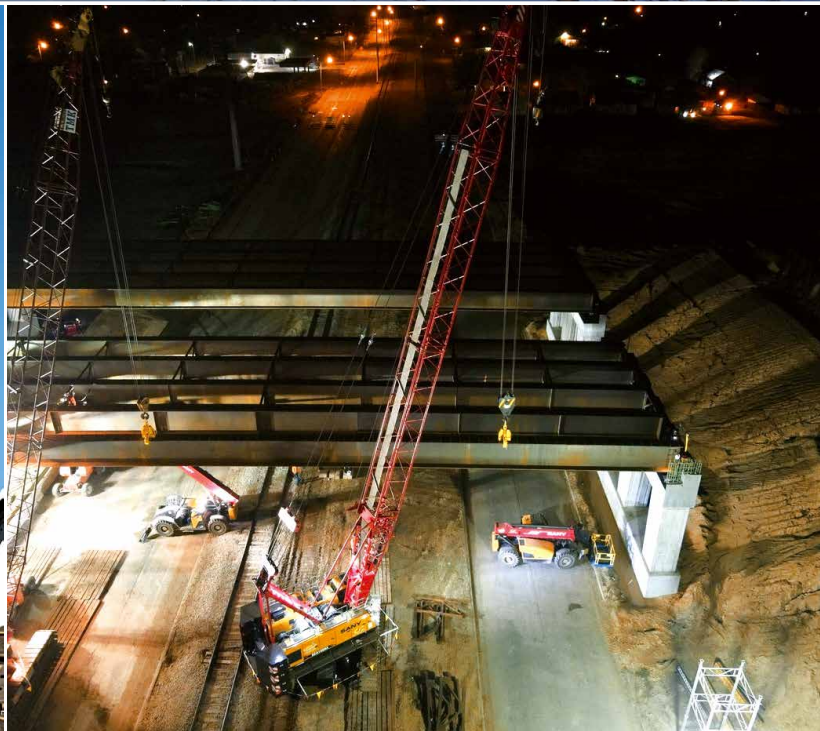
31.2 t



11 t



3.49 m / 5.1 m



■ LATTICE BOOM CRAWLER CRANE

SCE1000A

- Reduced operational cost due to globally standard transport plan
- Highly efficient self assembly and disassembly, retractable crawlers
- Optional main/aux. winch freefall, luffing jib
- Ground bearing pressure down to 0.1 Mpa
- New smart driver's cab with full consideration given to operator comfort
- Deployed as the auxiliary crane for ≤6 MW wind turbine erection
- Widely applied in steel cage hoisting and steel structure hoisting

ENGINE

Cummins
QSL9-C325 Stage V

MAIN PUMP

Kawasaki

MAIN VALVE

Kawasaki

REDUCER

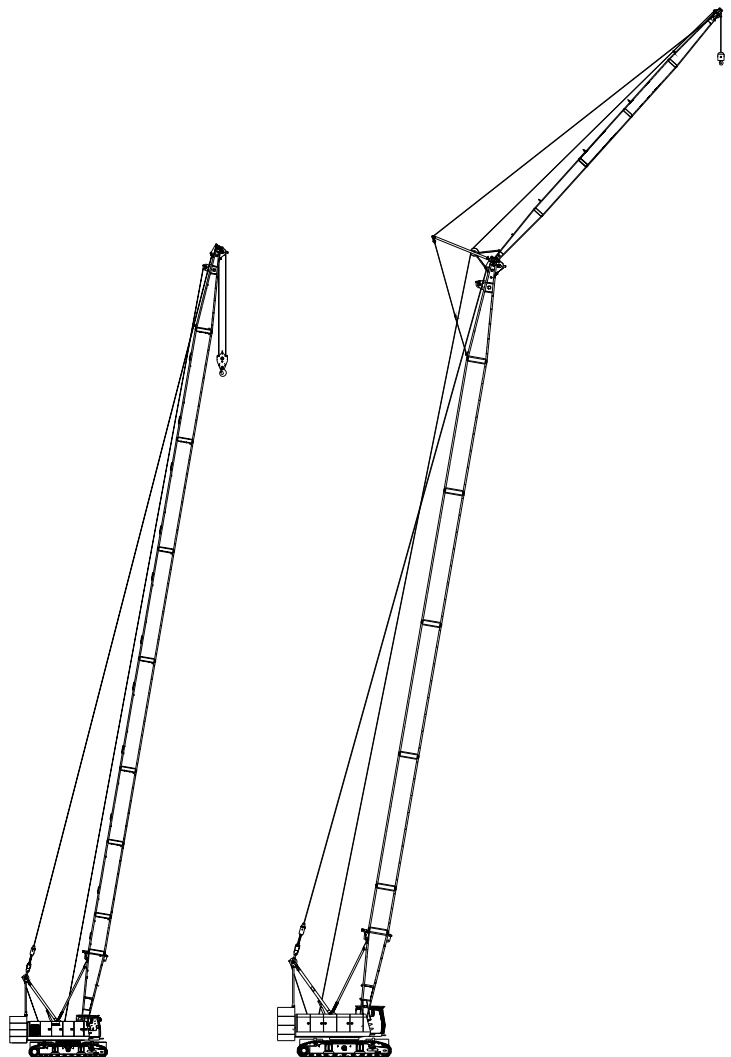
Rexroth

H

Max. lifting capacity: **100 t**
Max. lifting moment: **380 t·m**
Boom length: **13 m ~ 64 m**

FJ

Max. lifting capacity: **11 t**
Jib length: **9 m ~ 22.5 m**
Longest boom + longest jib: **52 m + 22.5 m**



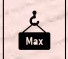
H

FJ

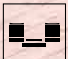
■ LATTICE BOOM CRAWLER CRANE

SCE1350A

Adaptable and versatile

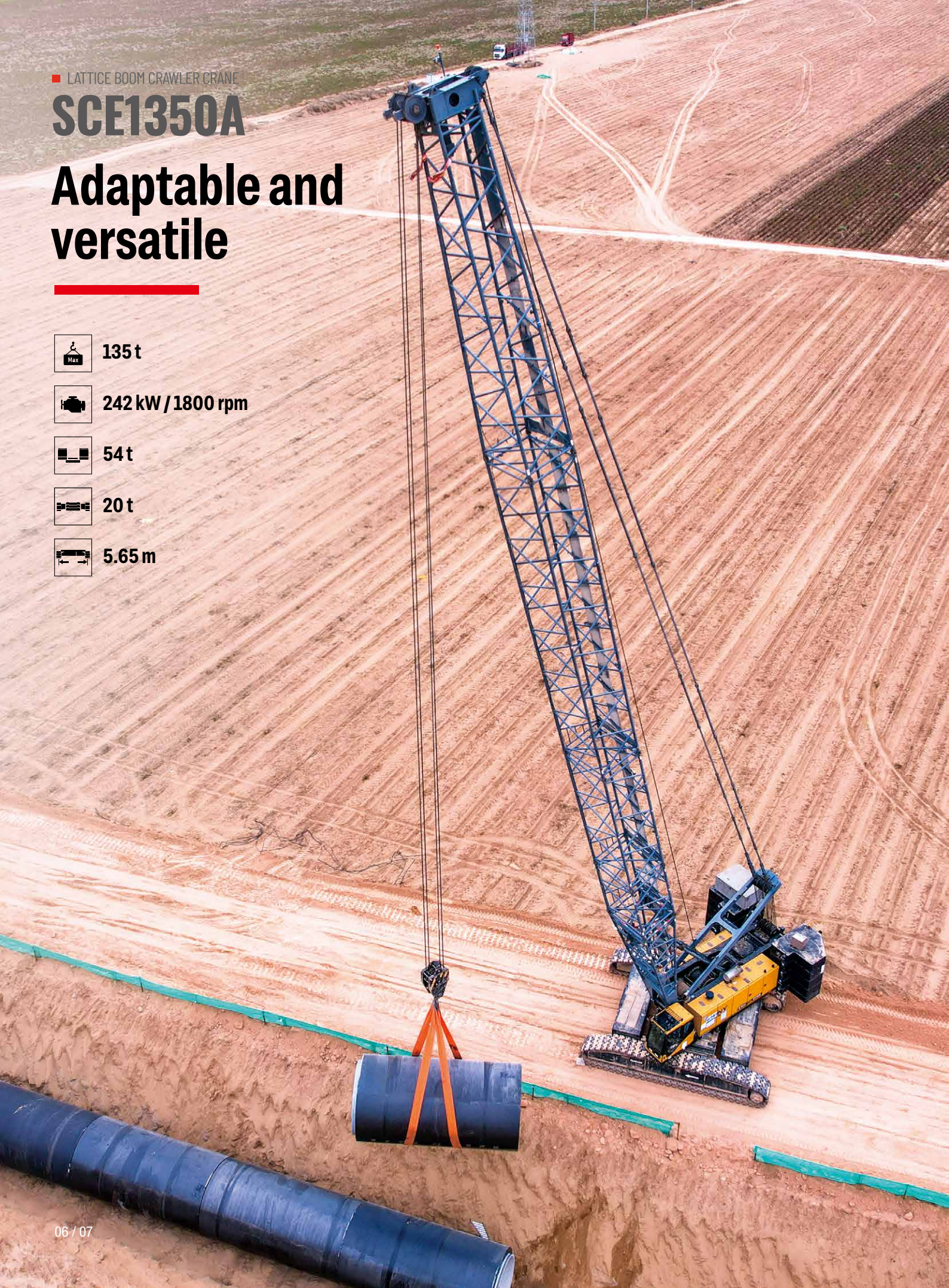
 135 t

 242 kW / 1800 rpm

 54 t

 20 t

 5.65 m



■ LATTICE BOOM CRAWLER CRANE

SCE1350A

- Reduced operational cost due to globally standard transport plan
- Highly efficient self assembly and disassembly
- Wide application with optional main/aux. winch freefall, luffing jib
- Ground bearing pressure down to 0.112 Mpa
- New smart driver's cab with full consideration given to operator comfort.
- Deployed as the auxiliary crane for ≤ 8 MW wind turbine erection
- Standard reduced counterweight load charts available, suitable for trestle bridge hoisting, auxiliary hoisting, operation on soft foundation
- Strong lifting capacities on 43 m boom, suitable for subway and steel cage hoisting

ENGINE

Cummins
L9-C325 Stage V

MAIN PUMP

Kawasaki

MAIN VALVE

Kawasaki

REDUCER

Rexroth

H

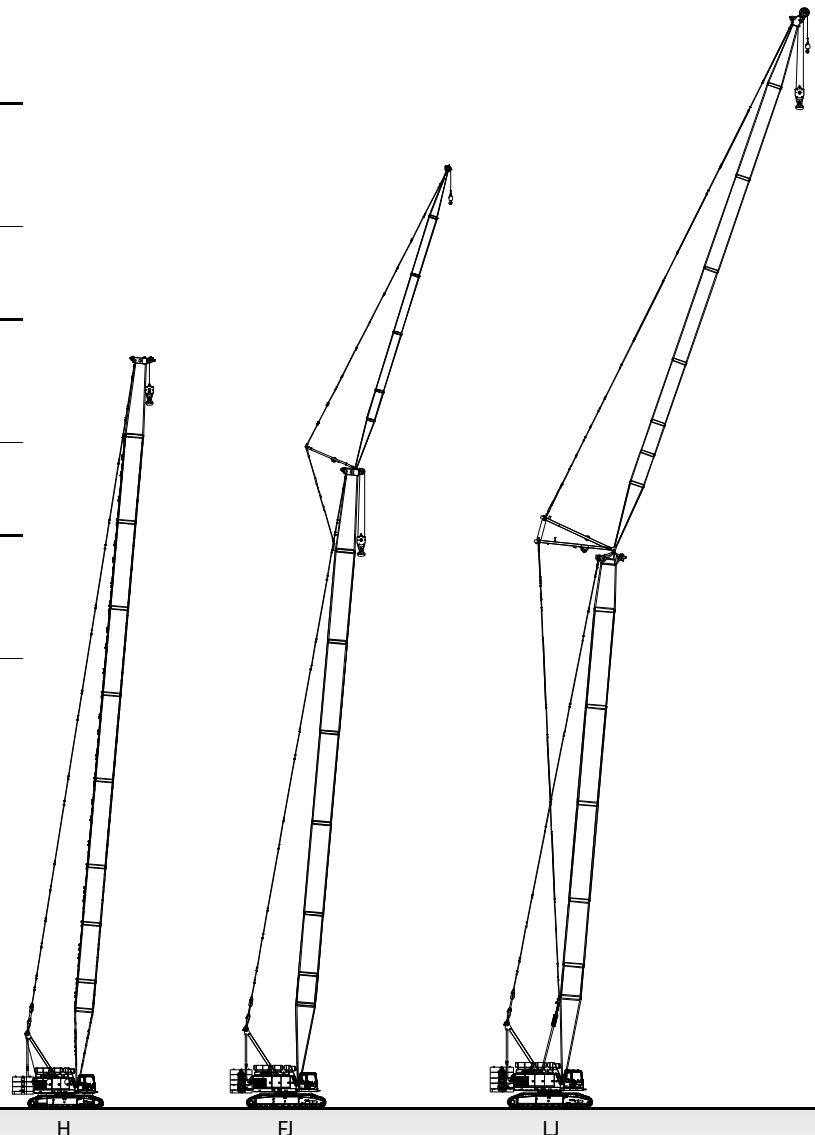
Max. lifting capacity: **135 t**
Max. lifting moment: **668 t·m**
Boom length: **16 m ~ 76 m**

FJ

Max. lifting capacity: **27 t**
Jib length: **13 m ~ 31 m**
Longest boom + longest jib: **61 m + 31 m**

LJ

Max. lifting capacity: **40 t**
Jib length: **22 m ~ 52 m**
Longest boom + longest jib: **49 m + 52 m**



H

FJ


LJ

■ LATTICE BOOM CRAWLER CRANE


SCE1350A-EV

Go green with pure electric solution

 **135 t**

 **336 kW**

 **368 kWh**

 **52 t**

 **20 t**

 **5.65 m**

■ LATTICE BOOM CRAWLER CRANE

SCE1350A-EV



- Reduced operational cost due to globally standard 3 meter transport plan
- Highly efficient self assembly and disassembly
- Wide application with optional main/aux. winch freefall, luffing jib
- Ground bearing pressure down to 0.112 Mpa
- New smart driver's cab with full consideration given to operator comfort
- Standard reduced counterweight load charts available, suitable for trestle bridge hoisting, auxiliary hoisting, operation on soft foundation
- Strong lifting capacities on 43 m boom, suitable for subway and steel cage hoisting
- Zero emission, fast charging, long working rang

MOTOR

Danfoss

EM-PMI375-T1100

MAIN PUMP

Kawasaki

MAIN VALVE

Kawasaki

REDUCER

Rexroth

H

Max. lifting capacity: **135 t**

Max. lifting moment: **668 t·m**

Boom length: **16 m ~ 76 m**

FJ

Max. lifting capacity: **27 t**

Jib length: **13 m ~ 31 m**

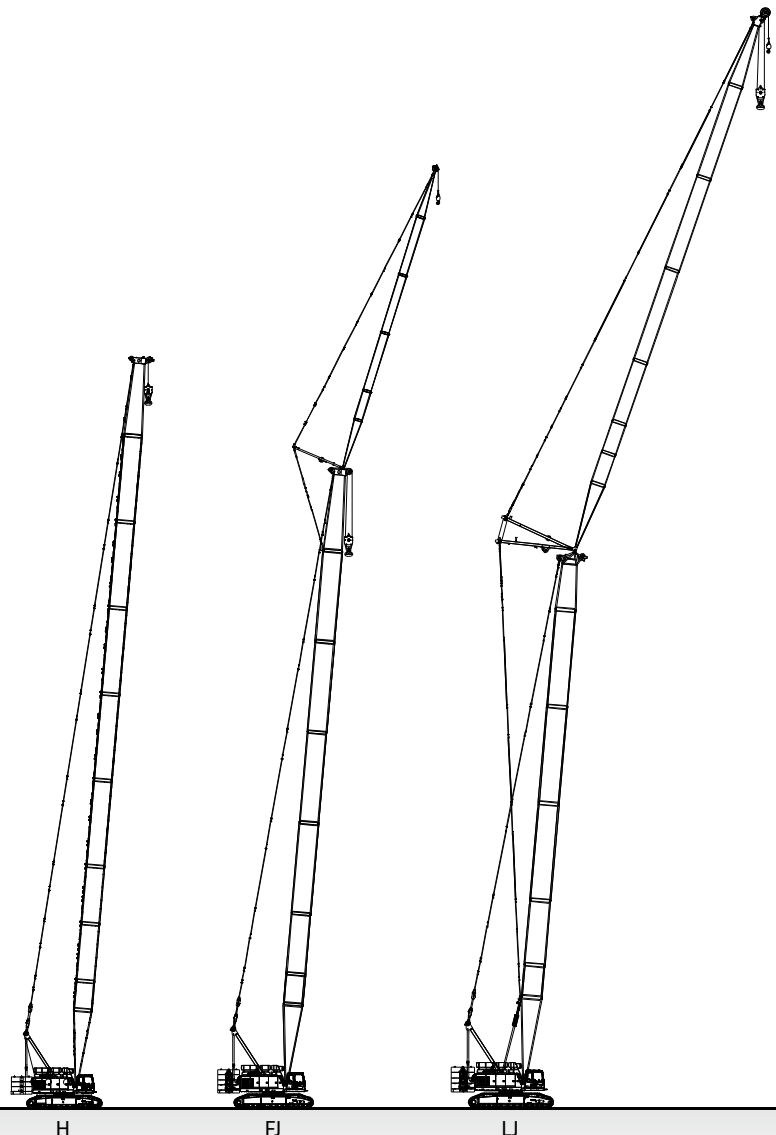
Longest boom + longest jib: **61 m + 31 m**

LJ

Max. lifting capacity: **40 t**

Jib length: **22 m ~ 52 m**

Longest boom + longest jib: **49 m + 52 m**



H


FJ

LJ

■ LATTICE BOOM CRAWLER CRANE

SCE2600A

An all rounder for infrastructure building

 Max 260 t

 298 kW / 2100 rpm

 100 t

 40 t

 6.78 m

■ LATTICE BOOM CRAWLER CRANE

SCE2600A

- Widely applied in storied building, factory, subway, bridge, pipeline, port and base construction
- Self-dis/assembly of boom base, rear counterweight, and crawlers
- Ground bearing pressure down to 0.14 Mpa
- Boom and jib with reduced width, suitable for transportation in Europe
- Optional main/aux. hoist winch freefall
- Porsche driver's cab featuring streamlined modeling and convenient control

ENGINE

Cummins

X12-C400 298kW Stage V

MAIN PUMP

Rexroth

MAIN VALVE

Rexroth

REDUCER

Rexroth / O&K

H

Max. lifting capacity: **260 t**

Max. lifting moment: **1500 t·m**

Boom length: **20 m ~ 92 m**

FJ

Max. lifting capacity: **74.2 t**

Jib length: **13 m ~ 42 m**

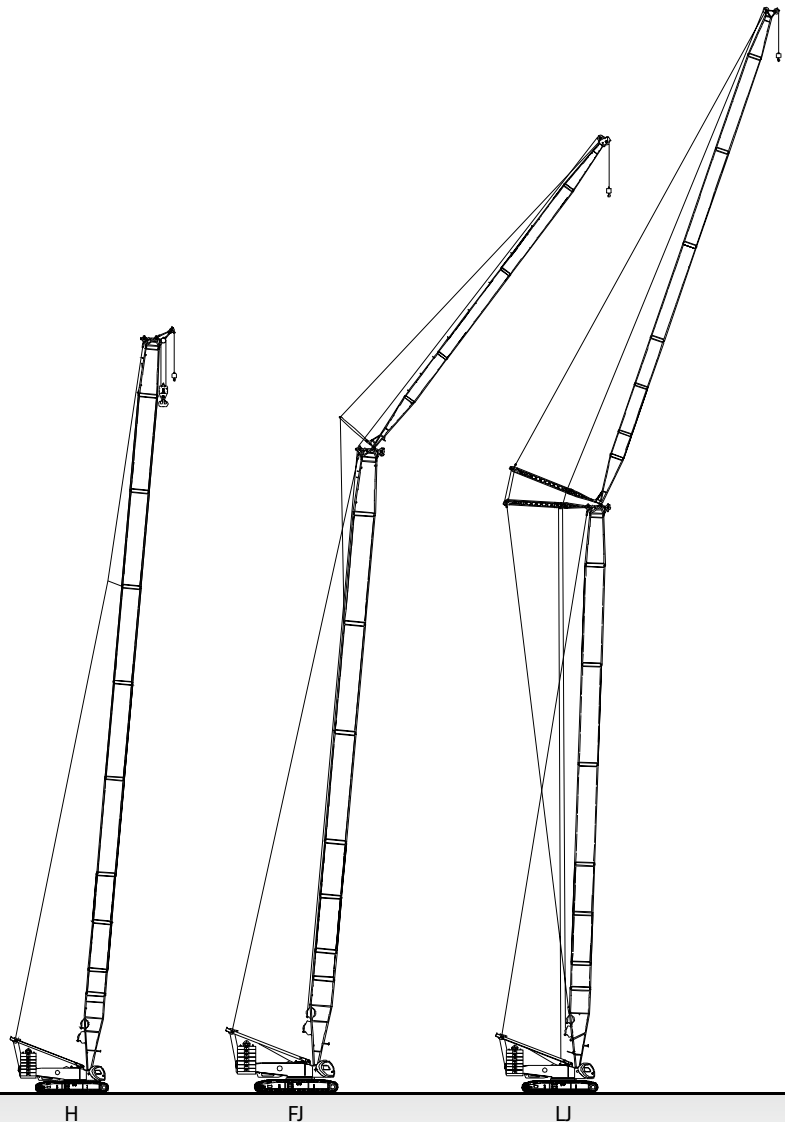
Longest boom + longest jib: **62 m + 42 m**

LJ

Max. lifting capacity: **110 t**

Jib length: **21 m ~ 63 m**

Longest boom + longest jib: **62 m + 63 m**



■ LATTICE BOOM CRAWLER CRANE

SCE4000A-1

Strong and reliable

 400 t

 298 kW / 2100 rpm

 150 t

 40 t

 7.3 m

■ LATTICE BOOM CRAWLER CRANE

SCE4000A-1

- Suitable for shield hoisting, wind power maintenance, petrochemical and logistics park hoisting
- Powered pins fitted for efficient dis/assembly of the whole machine
- Neat hydraulic tube arrangement
- Reserved maintenance access for easy troubleshooting and maintenance

ENGINE

Cummins X12 Stage V

MAIN PUMP

Rexroth

MAIN VALVE

Rexroth

REDUCER

Rexroth

H

Max. lifting capacity: **400 t**

Max. lifting moment: **2695 t·m**

Boom length: **24 m ~ 84 m**

LJ

Max. lifting capacity: **165 t**

Jib length: **21 m ~ 75 m**

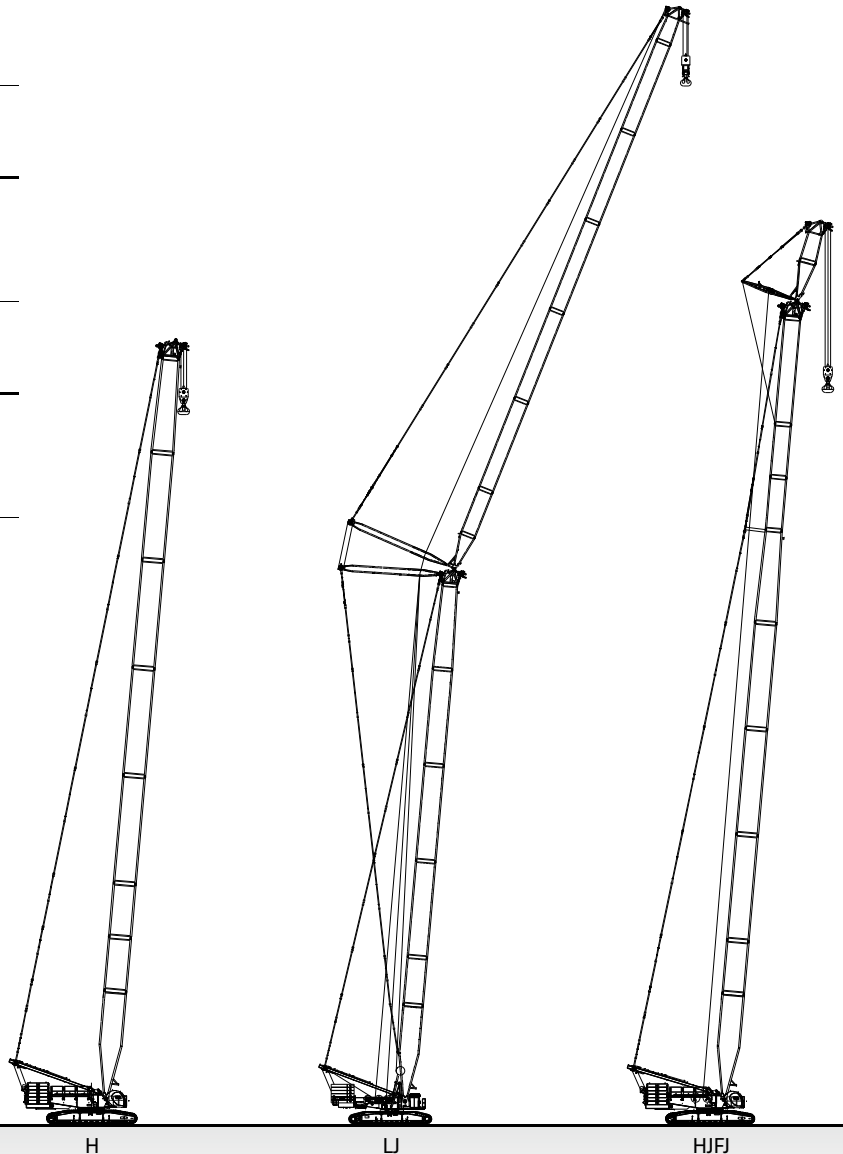
Longest boom + longest jib: **66 m + 75 m**

HJFJ

Max. lifting capacity: **72.8 t**

Jib length: **9 m**

Longest boom + longest jib: **90 m + 9 m**







■ LATTICE BOOM CRAWLER CRANE

SCE4800A

Smart and strong

 Max 480 t

 298 kW / 2100 rpm

 180 t

 50 t

 210 t

 7.63 m

■ LATTICE BOOM CRAWLER CRANE

SCE4800A

- More adaptable to constricted jobsite with front erection outriggers
- Suitable for installation and maintenance of 3 MW wind turbine with maximum height of 120 m
- Stronger capacity at LJ 60 m + 72 m without superlift device
- Smart operation realized by wireless remote control and extra large touch displays
- Parts of boom and jib interchangeable with SCE6000A

ENGINE

Foton Cummins
X12-C400 Stage V

MAIN PUMP

Rexroth

MAIN VALVE

Rexroth

REDUCER

Rexroth

H

Max. lifting capacity: **480 t**
Max. lifting moment: **2984 t·m**
Boom length: **24 m ~ 84 m**

LJ

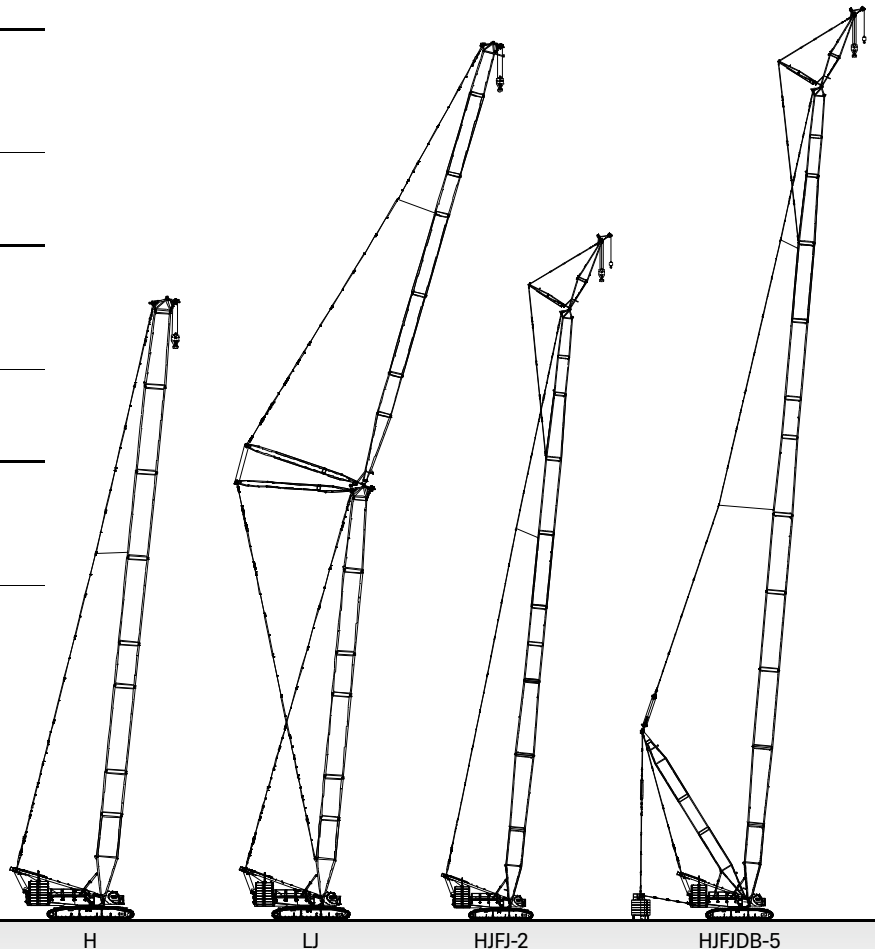
Max. lifting capacity: **177 t**
Luffing jib length: **24 m ~ 72 m**
Longest boom + longest luffing jib: **60 m + 72 m**

HJFJ-2

Max. lifting capacity: **140 t**
Fixed jib length: **72 m ~ 96 m**
Longest boom + longest jib: **96 m + 12 m**

HJFJDB-5

Max. lifting capacity: **133 t**
Fixed jib length: **96 m ~ 126 m**
Longest boom + longest jib: **126 m + 12 m**



H

LJ

HJFJ-2

HJFJDB-5

■ LATTICE BOOM CRAWLER CRANE

SCE8000A

Strong and efficient

 Max
800 t

 447 kW / 1800 rpm

 230 t

 80 t

 390 t

 9 m



■ LATTICE BOOM CRAWLER CRANE

SCE8000A

- Strong lifting capacities suitable for wind turbine installation with maximum tower height of 162 m
- Fast set-up and disassembly via one-key erection of mast and self dis/assembly of crawler frames
- Economical transport, meeting global transport standards
- Optimal safety guaranteed by remote controlled operation and one-key adjustment of center of gravity
- The average ground bearing pressure in wind power condition is reduced to 0.2MPa

ENGINE

Cummins
X15-C600 Stage V

MAIN PUMP

Rexroth

MAIN VALVE

Rexroth

REDUCER

Rexroth

H

Max. lifting capacity: **800 t**
Max. lifting moment: **4956 t·m**
Boom length: **99 m**

HDB

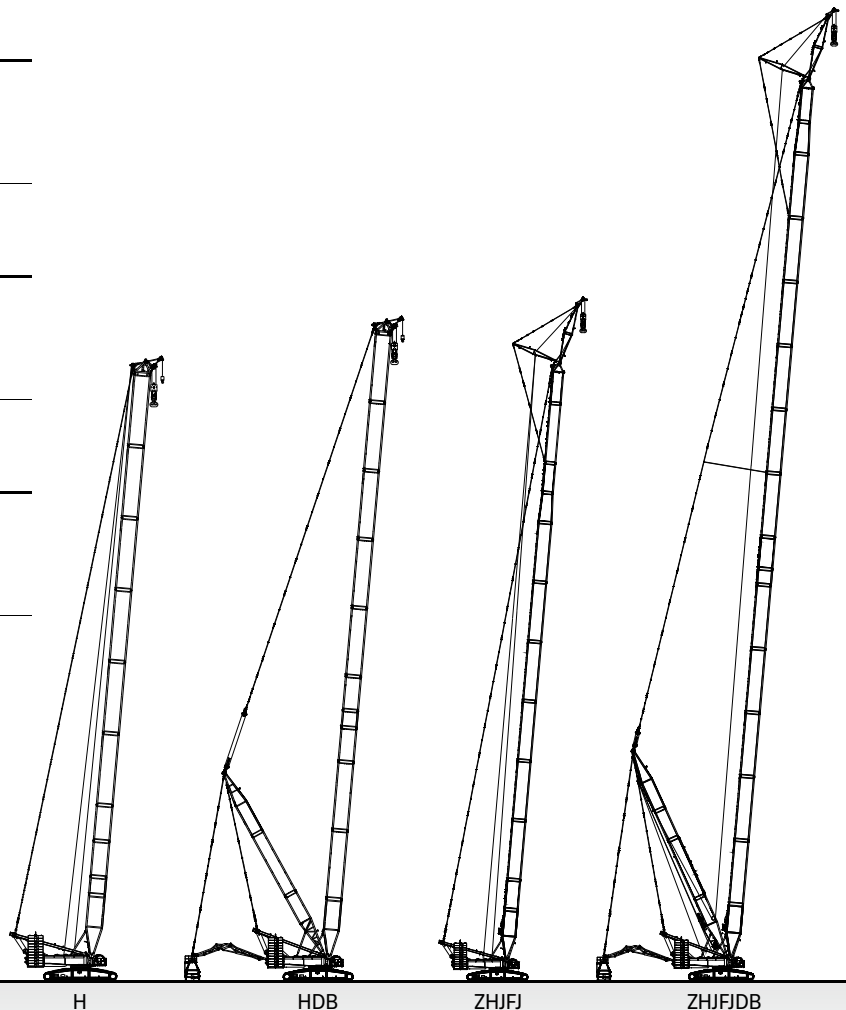
Max. lifting capacity: **800 t**
Max. lifting moment: **12000 t·m**
Boom length: **111 m**

ZHJFJ

Max. lifting capacity: **240 t**
Jib length: **12 m**
Longest boom + longest jib: **102 m + 12 m**

ZHJFJDB

Max. lifting capacity: **240 t**
Jib length: **12 m**
Longest boom + longest jib: **165 m + 12 m**



LATTICE BOOM CRAWLER CRANE

SCC12500A

Blending height with optimum power

 1250 t

 2×315 kW

 250 t

 90 t

 450 t

 9.8 m



■ LATTICE BOOM CRAWLER CRANE

SCC12500A

- HDB 80 m suitable for 700 t petrochemical packed column hoisting, LJDB 108 m + 114 m delivering larger lifting range, HJFJDB 165 m + 12 m suitable for onshore 160 m wind turbine erection
- Ultra long boom erected within 30 min thanks to double pump confluence technology
- Double Mercedes-Benz engines, reliable power system
- Fast dis/assembly with powered pins and wireless remote control
- Boom/jib nested for economical transport and stacked in three layers, 60% less storing space needed
- Porsche driver's cab featuring streamlined modeling, wider view and better NVH performance

ENGINE

Mercedes-Benz
OM460LA.E3A/3

MAIN PUMP

Rexroth

MAIN VALVE

Rexroth

REDUCER

Rexroth

H

Max. lifting capacity: **1250 t**
Max. lifting moment: **17000 t·m**
Boom length: **108 m**

HJDB

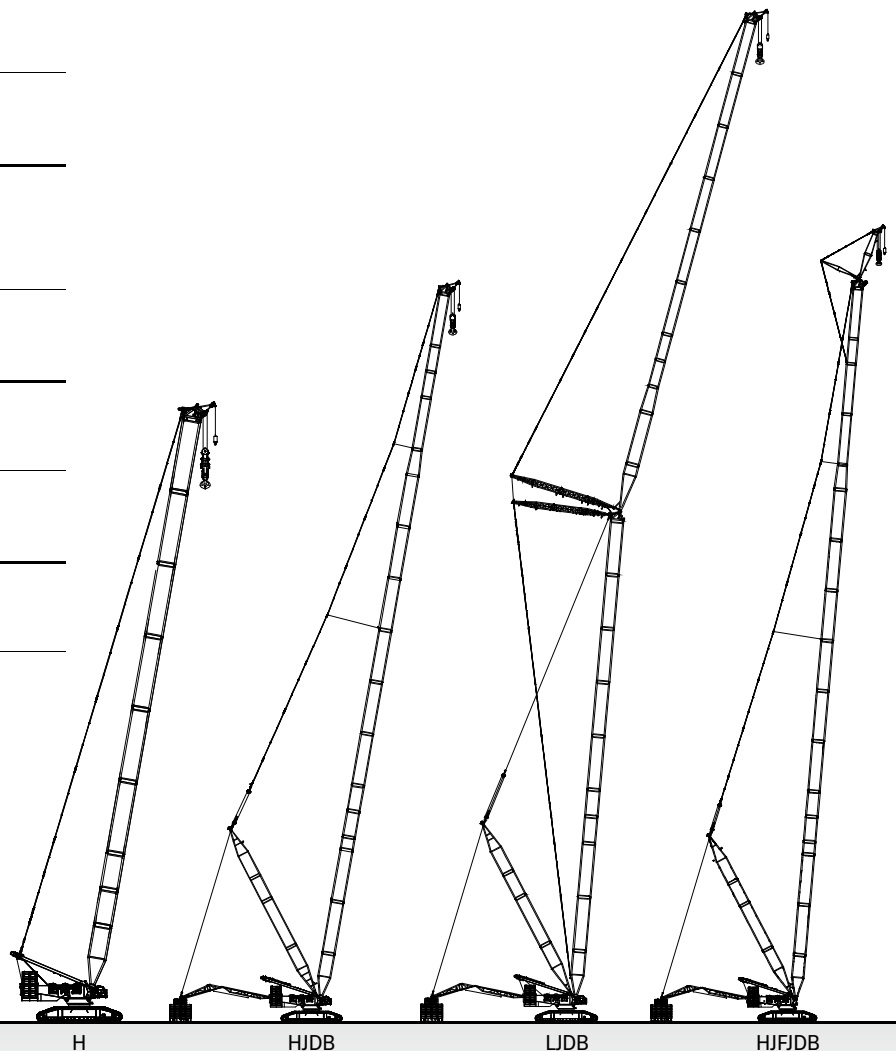
Max. lifting capacity: **650 t**
Max. lifting moment: **16260 t·m**
Boom length: **165 m**

LJDB

Max. lifting capacity: **650 t**
Longest boom + longest jib: **108 m + 114 m**

HJFJDB

Max. lifting capacity: **228 t**
Longest boom + longest jib: **165 m + 12 m**




■ LATTICE BOOM CRAWLER CRANE

SCE22000A

Super heavy lifter

 **2200 t**

 **2×390 kW**

 **280 t**

 **80 t**

 **1160 t**

 **11.5 m**

■ LATTICE BOOM CRAWLER CRANE

SCE22000A

- Optimal safety guaranteed by remote controlled operation and one-key adjustment of center of gravity
- Strong lifting capacities and performances in petrochemical and nuclear power plant applications
- Capable of making up a 4000 tonner by two 2200 t units with a few additional parts
- An option of using 500t auxiliary crane as superlift counterweight wagon to realize superlift counterweight grounding slewing
- Optional powerful three-winch working condition, pioneering in petrochemical application
- Optional superlift counterweight suspension system increases operation efficiency by 20%
- Maximum transport weight of single piece less than 55 t, detaching mechanism adopted between slewing bearing and undercarriage
- Double-engine mode featuring higher operation speed, single-engine mode with lower energy cost
- Key components imported from well-known brands of high reliability
- Capacious cabin providing wider view and accommodating a crew of more people
- Smart lifting software including ground bearing pressure offered for free

ENGINE

**Mercedes-Benz
OM471LA.E5-1**

MAIN PUMP

Rexroth

MAIN VALVE

Rexroth

REDUCER

Rexroth

HDB

Max. lifting capacity: **2200 t**

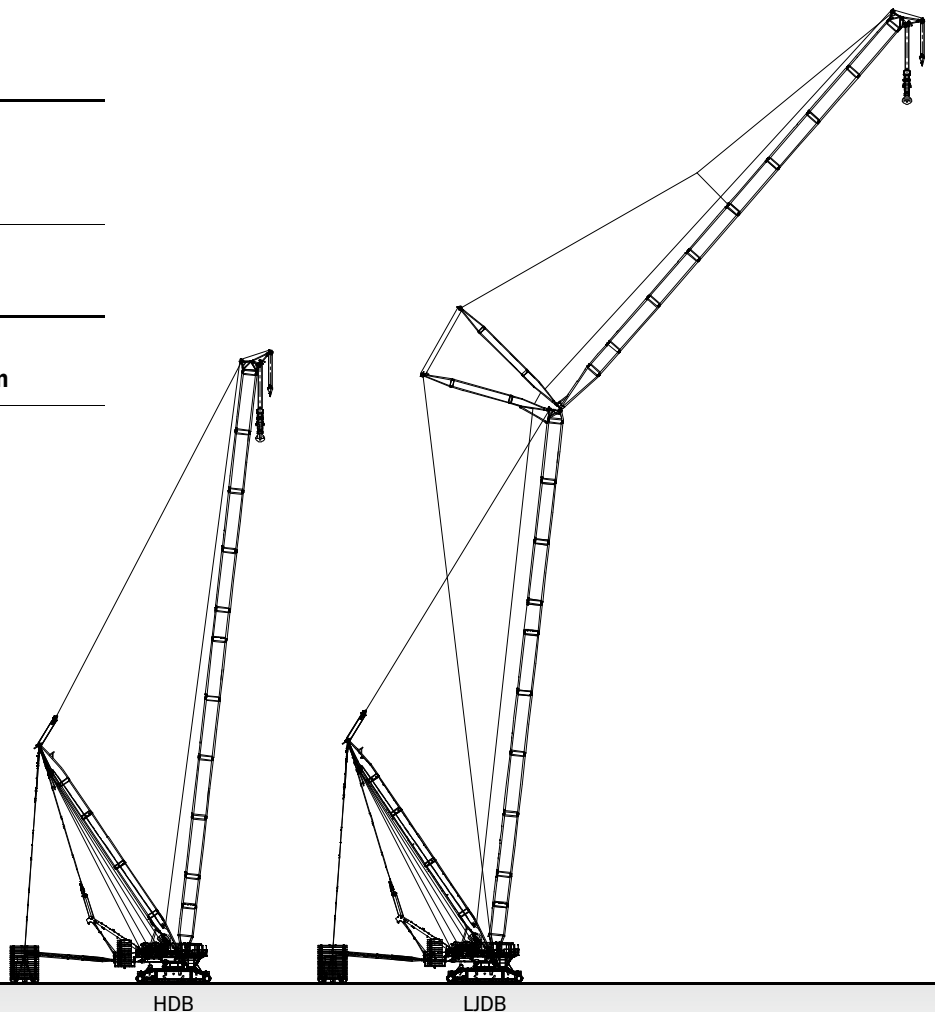
Max. lifting moment: **35000 t·m**

Boom length: **54 m ~ 108 m**

LJDB

Max. lifting capacity: **796 t**

Longest boom + longest jib: **108 m + 108 m**



SANY[®]



www.sanyglobal.com

TELESCOPIC CRAWLER CRANE


SCE600TB

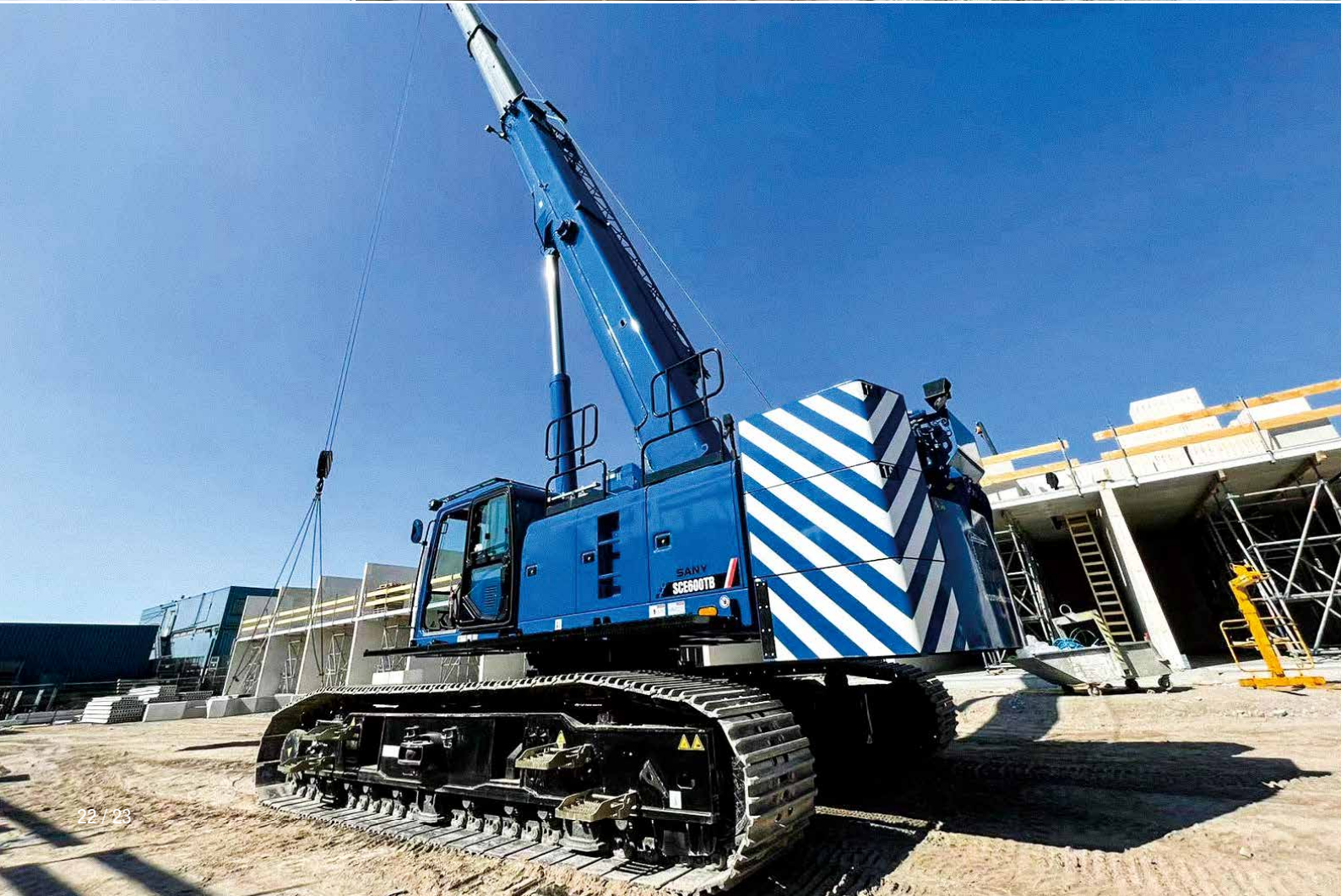
Move & work efficiently

 Max
60 t

 145 kW / 2000 rpm

 19 t

 4.0 m / 3.25 m



■ TELESCOPIC CRAWLER CRANE

SCE600TB

- Lower operational cost with globally standard transport solution
- Fast set-up with self loading and unloading of counterweight
- New smart cab of optimal operator comfort
- Ground bearing pressure down to 0.095 MPa
- 4° gradient load chart available

ENGINE

Cummins
B6.7-195 Stage V

MAIN PUMP

Danfoss

MAIN VALVE

Rexroth

REDUCER

Rexroth / Brevini

H

Max. lifting capacity: **60 t**
Max. lifting moment: **220 t·m**
Boom length: **11.88 m ~ 46 m**

FJ

Max. lifting capacity: **5 t**
Jib length: **9.2 m / 16 m**
Longest boom + longest jib: **46 m + 16 m**



H

FJ

SANY



www.sanyglobal.com



■ TELESCOPIC CRAWLER CRANE

SCE800TB

Proven reliability



80 t



242 kW /1800 rpm



26 t



6 t



2.64 m / 3.445 m / 4.25 m



TELESCOPIC CRAWLER CRANE

SCE800TB

- Reduced operational cost due to globally standard transport plan
- Ground bearing pressure down to 0.09 Mpa
- Strong lifting capacity, with slope load charts
- Driver's cab equipped with large touch screen, more convenient control

ENGINE

Cummins
L9-C325 Stage V

MAIN PUMP

Danfoss

MAIN VALVE

Rexroth

REDUCER

Rexroth / O&K

H

Max. lifting capacity: **80 t**
Max. lifting moment: **300 t·m**
Boom length: **47 m**

FJ

Max. lifting capacity: **5.5 t**
Jib length: **10.2 m / 17.5 m**
Longest boom + longest jib: **47 m + 17.5 m**



H

FJ

SANY




www.sanyglobal.com



TELESCOPIC CRAWLER CRANE


SCE800TB-EV


Go green with pure electric solution

 Max 80 t

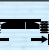
 206 kW / 1500 rpm

 282 kWh

 618 V

 26 t

 6 t

 5.1 m / 3.49 m

TELESCOPIC CRAWLER CRANE

SCE800TB-EV



- Zero emission, environmentally friendly and energy-saving
- Large capacity battery of ultra long range
- New smart cab of optimal operator comfort
- Lower operational cost with globally standard transport solution
- Self dis/assembly system, retractable crawlers, higher efficiency

MOTOR

Danfoss

EM-PMI375-T1100-1500

MAIN PUMP

Danfoss

MAIN VALVE

Danfoss

REDUCER

Rexroth / O&K

H

Max. lifting capacity: **80 t**

Max. lifting moment: **313 t·m**

Boom length: **47 m**

FJ

Max. lifting capacity: **5.5 t**

Jib length: **10.2 m / 17.5 m**

Longest boom + longest jib: **47 m + 17.5 m**



H

FJ

SANY



www.sanyglobal.com



TELESCOPIC CRAWLER CRANE

SCE1300TB

Capable and flexible



130 t



242 kW / 1800 rpm



36 t



10 t



3.02 m / 3.96 m / 4.9 m



TELESCOPIC CRAWLER CRANE

SCE1300TB

- Stronger lifting capacities in its class
- Basic machine transport width 3 m, height 3.3 m, satisfying European transport standard
- Self dis/assembly for whole machine
- Highly adaptable with load charts of variable counterweights, track gauges, and 4° gradient
- The 3rd Gen smart control system with 12.8" touch screen, intuitive and convenient

ENGINE

Cummins
QSL9-C325 Stage V

MAIN PUMP

Danfoss

MAIN VALVE

Danfoss

REDUCER

Rexroth

H

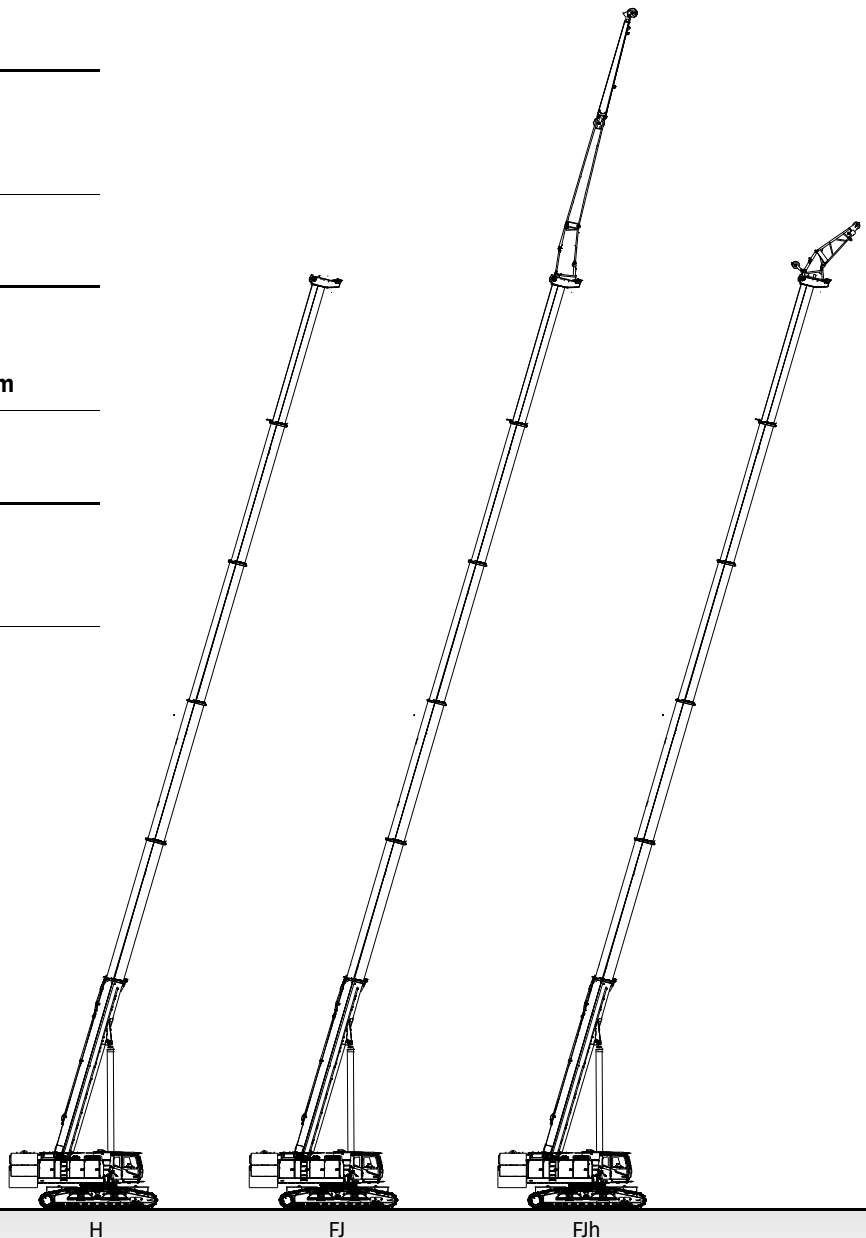
Max. lifting capacity: **130 t**
Max. lifting moment: **481 t·m**
Boom length: **12.92 m ~ 59.9 m**

FJ

Max. lifting capacity: **7 t**
Jib length: **9.4 m / 15.5 m**
Longest boom + longest jib: **59.9 m + 15.5 m**

FJh

Max. lifting capacity: **40 t**
Jib length: **3 m**
Longest boom + longest jib: **59.9 m + 3 m**



■ ALL-TERRAIN CRANE

SAC600E

Compact and flexible

 60 t

 50 m

 16 m

 280 kW / 1600 rpm

 13 t



■ ALL-TERRAIN CRANE

SAC600E

- 12 t axle load with 4.2 t counterweight
- 16 t axle load with 13 t counterweight and tail toolbox.
- Counterweight self loading and unloading, safe and efficient
- New generation iCab, safe, comfortable, user-friendly
- Wireless remote control for all operation movements
- Optional anti-electromagnetic interference module

ENGINE

**Mercedes-Benz
OM470LA (EU Stage V)**

AXLES

Kessler

TRANSMISSION

Allison

MAIN VALVE/PUMP

Danfoss

T

Max. lifting capacity: **60 t**
Max. boom length: **50 m**
Max. lifting radius: **39 m**
Max. lifting height: **50.5 m**

TJ/TH*

Max. lifting capacity: **7.9 t**
Jib length: **9.2 m / 16 m**
Max. lifting radius: **44 m**
Max. lifting height: **66.5 m**

TA*

Max. lifting capacity: **9.1 t**
Jib length: **3 m**
Max. lifting radius: **40 m**
Max. lifting height: **53.5 m**

* optional



■ ALL-TERRAIN CRANE

SAC1200E

Strong and efficient

 120 t

 66 m

 25.7 m

 360 kW / 1600 rpm

 150 kW / 1800 rpm

 31 t



■ ALL-TERRAIN CRANE

SAC1200E

- 12 t axle load
- Double engine system with reduced operation fuel consumption
- Capable of traveling with 17.2 t counterweight on jobsites
- Counterweight self loading and unloading, rearward movement 940 mm
- Standard anti-electromagnetic interference module
- New generation iCab, safe, comfortable, user-friendly
- Wireless remote control for all operation movements

CHASSIS ENGINE

**Mercedes-Benz
OM471LA (EU Stage V)**

CRANE ENGINE

**Mercedes-Benz
OM934LA (EU Stage V)**

AXLES

Kessler

TRANSMISSION

ZF Traxon

MAIN VALVE / PUMP / MOTOR

Rexroth

T

Max. lifting capacity: **120 t**
Max. boom length: **66 m**
Max. lifting radius: **54 m**
Max. lifting height: **66 m**

TJ* / TH*

Max. lifting capacity: **7.2 t**
Jib length: **10.4 m / 18.7 m**
Max. lifting radius: **60 m**
Max. lifting height: **84 m**

TEJ / TEH*

Max. lifting capacity: **6 t**
Jib length: **17.4 m / 25.7 m**
Max. lifting radius: **60 m**
Max. lifting height: **91 m**

TA*

Max. lifting capacity: **29.1 t**
Jib length: **2.9 m**
Max. lifting radius: **52 m**
Max. lifting height: **68.5 m**

* optional




■ ALL-TERRAIN CRANE

SAC2500E

Maximized performance and reliability

 250 t

 75 m

 43 m

 390 kW / 1600 rpm

 149 kW / 2200 rpm

 80 t



■ ALL-TERRAIN CRANE

SAC2500E

- 12 t axle load
- Double engine system with reduced operation fuel consumption
- Capable of traveling with 22 t counterweight on jobsites
- Standard anti-electromagnetic interference module
- New generation iCab, safe, comfortable, user-friendly
- Wireless remote control for all operation movements

CHASSIS ENGINE

**Mercedes-Benz
OM471LA (EU Stage V)**

CRANE ENGINE

**Cummins
B6.7 (EU Stage V)**

AXLES

Kessler

TRANSMISSION

ZF Traxon

MAIN VALVE/PUMP/MOTOR

Rexroth

T

Max. lifting capacity: **250 t**

Max. boom length: **75 m**

Max. lifting radius: **70 m**

Max. lifting height: **74 m**

TJ* / TH*

Max. lifting capacity: **14.6 t**

Jib length: **11.2 m / 20 m**

Max. lifting radius: **82 m**

Max. lifting height: **95 m**

TEJ / TEH*

Max. lifting capacity: **11 t**

Jib length: **19.2 m / 28 m / 27.2 m / 36 m / 43 m**

Max. lifting radius: **82 m**

Max. lifting height: **111 m**

* optional



ROUGH-TERRAIN CRANE

SRE450

Optimal off-road agility



45 t



35 m



16 m



209 kW / 2200 rpm



4.5 t



ROUGH-TERRAIN CRANE

SRE450

- Stronger lifting capacities suitable for more applications
- Higher stability with outrigger span 7.2 m × 7.2 m
- Higher working speed and efficiency
- Luffing cylinder hinge rearward positioned for better view
- New generation cab with smart LMI interface, user-friendly and comfortable
- MachineLink+ cloud system for better monitoring and fleet management

ENGINE

Cummins B6.7 (EU Stage V)

AXLES

Meritor

TRANSMISSION

Dana

T (on outriggers)

Max. lifting capacity: **45 t**

Max. boom length: **35 m**

Max. lifting radius: **32 m**

Max. lifting height: **35.3 m**

TJ (on outriggers)

Max. lifting capacity: **4 t**

Jib length: **9.2 m / 16 m**

Max. lifting height: **51.5 m**

T (on tires)

Max. lifting capacity (stationary): **15.5 t**

Max. lifting capacity (pick & carry): **12.5 t**



T (on outriggers)

TJ (on outriggers)

T (on tires)

ROUGH-TERRAIN CRANE

SRE600


High performance, high reliability

 60 t

 45.5 m

 16 m

 209 kW / 2200 rpm

 6.4 t



ROUGH-TERRAIN CRANE

SRE600

- Higher stability with outrigger span 7.5 m × 7.4 m
- U shape boom profile, featuring lightweight and strong capacity
- Higher working speed and efficiency to boost productivity
- New generation cab with smart LMI interface, user-friendly and carefree
- Cab 0~20° tiltable, observing load at heights at ease
- MachineLink+ cloud system for better monitoring and fleet management

ENGINE

Cummins B6.7 (EU Stage V)

AXLES

Meritor

TRANSMISSION

ZF

T (on outriggers)

Max. lifting capacity: **60 t**
Max. boom length: **45.5 m**
Max. lifting radius: **34 m**
Max. lifting height: **46 m**

TJ (on outriggers)

Max. lifting capacity: **4 t**
Max. boom + jib length: **45.5 m + 16 m**
Max. lifting height: **62 m**

T (on tires)

Max. lifting capacity (stationary): **22 t**
Max. lifting capacity (pick & carry): **18 t**



T (on outriggers)

TJ (on outriggers)

T (on tires)

ROUGH-TERRAIN CRANE

SRE900


Focus on voice from the market

 Max
90 t

 Max
47 m

 Max
18 m

 209 kW / 2200 rpm

 9.5 t



ROUGH-TERRAIN CRANE

SRE900

- New generation cab with smart LMI interface, user-friendly and carefree
- Capable of working in desert, oil field, refinery, saline land and other harsh environments
- Electronically controlled load-sensing hydraulic system, featuring precise and responsive control
- Two work modes ensuring high working efficiency and strong driving ability
- Robust power train boosting working flexibility and productivity

ENGINE

Cummins B6.7 (EU Stage V)

AXLES

Meritor

TRANSMISSION

Dana

T (on outriggers)

Max. lifting capacity: **90 t**

Max. boom length: **47 m**

Max. lifting radius: **38 m**

Max. lifting height: **47.5 m**

TJ (on outriggers)

Max. lifting capacity: **6 t**

Max. boom + jib length: **47 m + 18 m**

Max. lifting height: **65.5 m**

T (on tires)

Max. lifting capacity (stationary): **22.4 t**

Max. lifting capacity (pick & carry): **14.3 t**



T (on outriggers)

TJ (on outriggers)

T (on tires)

ROUGH-TERRAIN CRANE

SRE1100

Strong and smart

 110 t

 51 m

 18 m

 209 kW / 2200 rpm

 13.5 t



ROUGH-TERRAIN CRANE

SRE1100

- Powerful lifting capacity with 3380kN.m maximum lifting moment and 1740kN.m on full-extension boom, leading in its class
- Higher working speed and efficiency to boost productivity
- New generation cab with smart LMI interface, 0~20° tiltable, user-friendly and carefree
- MachineLink+ cloud system for better monitoring and fleet management

ENGINE

Cummins B6.7 (EU Stage V)

AXLES

Meritor

TRANSMISSION

Dana

T (on outriggers)

Max. lifting capacity: **110 t**

Max. boom length: **51 m**

Max. lifting radius: **40 m**

Max. lifting height: **51.5 m**

TJ (on outriggers)

Max. lifting capacity: **5.4 t**

Max. boom + jib length: **51 m + 18 m**

Max. lifting height: **69.5 m**

T (on tires)

Max. lifting capacity (stationary): **22.2 t**

Max. lifting capacity (pick & carry): **15 t**



T (on outriggers)

TJ (on outriggers)

T (on tires)

TRUCK-MOUNTED CRANE

SPC500E

Adaptable and versatile

 50 t

 35 m

 8 m

 7.8 t



■ TRUCK-MOUNTED CRANE

SPC500E

- Strong lifting capacity suitable for urban construction
- Compatible with more commercial chassis
- Counterweight self loading and unloading, safe and efficient
- Being able to travel with total counterweight
- Efficient hydraulic system, energy saving

PUMP
CASAPPA

MOTOR
Kawasaki

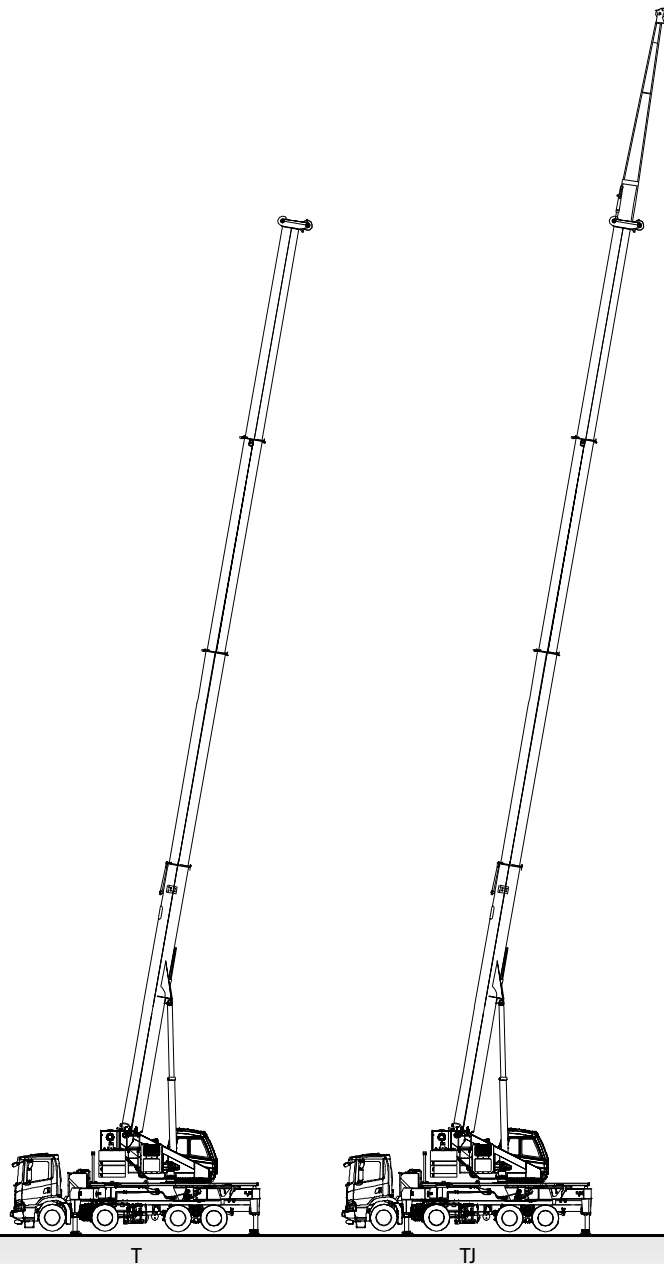
CONTROLLER
IFM

T

Max. lifting capacity: **50 t**
Max. boom length: **35 m**
Max. lifting radius: **32 m**
Max. lifting height: **36.1 m**

TJ

Max. lifting capacity: **2.8 t**
Jib length: **8 m**
Max. lifting radius: **27.6 m**
Max. lifting height: **43.9 m**



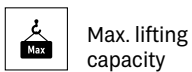
CODE/ICON DESCRIPTION

CRAWLER CRANE

H	Main boom
FJ	Fixed jib
LJ	Luffing jib
HJ	Mixed boom
D	Superlift mast
B	Superlift counterweight
ZHJ	Mixed power boom
FJh	Heavy-duty fixed jib

WHEEL CRANE

T	Telescopic boom
J	Fixed jib
E	Boom extension
H	Hydraulically adjustable jib
A	Auxiliary jib



Max. lifting capacity



Engine



Rear counterweight



Carbody counterweight



Superlift counterweight



Track gauge (center point)



Track gauge (margin)



Electric motor



Battery capacity



Battery voltage



Max. boom length



Max. fixed jib length



Chassis engine



Superstructure engine



Full counterweight

SANY[®]




SANY GROUP CRANE BU

SANY Mobile Crane Industrial Park, No.168 Jinzhou Avenue, Jinzhou Development Zone, Changsha City,
Hunan Province, P.R. China Zip 410600
Consulting sanycrane@sanygroup.com (Crane BU) / crd@sany.com.cn (IOHQ)
After-sales Service 0086-400 6098 318

Reminder:

Any change in the technical parameters and configuration due to product modification or upgrade may occur without prior notice.
The machine in the picture may include additional equipment. This brochure is for reference only, and goods in kind shall prevail.
Copyright at SANY. No part of this brochure may be copied or used for any purpose without written approval from SANY.

© Edited in March 2023

SANY CRANE |  |  | 
www.sanyglobal.com

