



SCE16000A

Crawler Crane

1600 Tons Lifting Capacity

Quality Changes the World



Max. lifting moment: 19800t·m
Max. boom length: 108m
Max. luffing jib combination: 108m+114m

The parameters, pictures and standard/optional equipment are only for reference in this brochure, the actual machine is based on the effective price list and contract.

■ www.sanyglobal.com



Crawler Crane Series
SCE16000A

P03	Main Features	<ul style="list-style-type: none"> ▪ Product Specifications ▪ Safety Device
P10	Technical Parameters	<ul style="list-style-type: none"> ▪ Main performance Parameters ▪ Outline Dimension ▪ Transportation Dimensions ▪ Assembly Procedure
P28	Boom Combinations	<ul style="list-style-type: none"> ▪ Configurations Combination ▪ H Configuration ▪ HDB Configuration ▪ HJ Configuration ▪ HJDB Configuration ▪ LJ Configuration ▪ LJDB Configuration ▪ HJFJDB Configuration ▪ HDB-SY4 Configuration ▪ HJDB-SY4 Configuration ▪ HJFJDB-SY4 Configuration



SCE16000A
SANY CRAWLER CRANE
1600 TONS LIFTING CAPACITY

QUALITY CHANGES THE WORLD

Features

- Page 04 Product specifications
- Page 08 Safety device



Product Specification



Appearance

- The industrial modeling of the cab is designed by Porsche. It has a smooth, elegant and novel appearance, which is a significant breakthrough when compared with traditional engineering machinery and has excellent brand identification. The cab has a sliding door structure, which is suitable for the crawler crane and convenient for the operator. It is adopted with fully-sealed steel frame structure with a large area of high strength toughened glass installed on the front, side and top, transmitting more light. The interior space of the cab is spacious and bright, with a broader sight view.

Comfort

- It is adopted with shock absorption, noise reduction, suspended, multi-mode and multi-stage adjustable seat, thus providing the operator with the most comfortable driving experience. The famous USA RedDot air conditioner is adopted, ensuring more reasonable air outlet and efficient cooling. It takes no more than 20 min to cool the cab from 55°C to 27.5°C. The left and right consoles are equipped with control handles, control buttons, ignition locks and other elements. The seats, control handles and control buttons are arranged according to ergonomic design, fully considering the driver's operation demands and habits. The control box can be adjusted to the most suitable position with the seat to ensure more comfortable operation. The cab can tilt up to 15° according to the work demands, and can also rotate to the front part of the rotating bed for the convenience of transport.

Carbody

- The hydraulic cylinder driving power pin is connected with the crawler frame for easy assembly and disassembly. The high-strength steel welded frame structure is adopted. Larger carbody design significantly improves the stability of the overall crane. The carbody counterweight is 90t, 45t each at front and back, and can be self-assembled.

Crawler Assembly

- Crawler frames: each crawler frame is equipped with independent traveling driving devices. The planetary gear reducer is driven by the hydraulic traveling motor, and independent traveling is realized through the transmission of the driving gear. The driving system has two speed positions, namely high speed and low speed: The low speed can provide sufficient traction force to realize 100% travel with load; the high speed can provide higher speed to improve the transit efficiency. The traveling drive can also realize stepless speed change;
- Track shoe: It is made of materials with high strength and high wear resistance through advanced casting process. After being installed on the equipment, its tension can be adjusted through the hydraulic cylinder, and the shim position can be adjusted to achieve the ideal tension.

One-key Leveling of Outriggers

- With the machine gravity calculated in real time, the outrigger balance is detected by the cylinder pressure sensor, the outriggers can be adjusted to level state by one key to reduce assembly time and improve efficiency.



Product Specification

Engine

- Mercedes-Benz: (Euro Tier III), optional Euro Tier IV;
- Rated power: 2×315 kW;
- Rated speed: 1800 rpm;
- Maximum output torque: 2100 N·m;
- Speed at the maximum output torque: 1300 rpm.

Load hoist winch mechanism

- The planetary gear box driven by hydraulic motor of variable displacement is used to control the main load hoist I and main load hoist II to lift and lower the load. It provides good inching performance, and also ensures quick powered lifting of main load hoist winches;
- The maximum number of parts of line is 62. The multilayer winding of rope-folding drum ensures no rope disorder. The gear box is featured in low noise, high efficiency, long service life and easy access to oil change.

Main load hoist winches W1-1 and W1-2	Speed of rope in the outermost working layer	0~140m/min
	Diameter of wire rope	32mm
	Rope length	1550m
	Rated single line pull	22.5t
Auxiliary load hoist winch W2	Speed of rope in the outermost working layer	140m/min
	Diameter of wire rope	28mm
	Rope length	600m
	Rated single line pull	17.2t

Boom hoist winch mechanism

- Components: Boom luffing mechanism, jib luffing mechanism, superlift luffing mechanism;
- All luffing winches adopt fold-line drums, which are driven by hydraulic motor through the planetary gear box and can realize a number of compound actions and good inching performance.

Boom luffing mechanism W3	Speed of rope in the outermost working layer	65×2m/min
	Diameter of wire rope	32mm
Jib luffing mechanism W4	Speed of rope in the outermost working layer	0~130m/min
	Diameter of wire rope	32mm
Superlift luffing mechanism W5	Speed of rope in the outermost working layer	140m/min
	Diameter of wire rope	32mm

Slewing mechanism

- The slewing hydraulic system adopts double motor to drive the spur gear through the planetary gear box, which can realize 360° rotation, slewing speed of 0~0.9 rpm, stepless speed regulation, no backlash at starting or stopping, stable operation and free slipping function at neutral position. Slewing ring: It is adopted with three-row roller type slewing bearing with external gears. The main unit can be separated from the lower structure through the adaptor ring.

Product Specification



- The operating equipment is made of high-strength steel tubes and high-strength steel plates, and the rolled welded pulleys are adopted on the boom head and hook.

Boom

- The boom is a spatial lattice structure of welded tubes with equal section areas of inserts and tapered sections for two ends. The boom top and root are strengthened with steel plates, which is easier for load transfer;
- The boom length is 111m, 30m(basic boom)~108m(with superlift), 3m boom insert used in non boom configuration;
- Compositions: boom base 10.5m, 1 transition section of 12 m, 1 connecting tip of 1.5m, 1 insert of 3m, 2 inserts of 6m, and 6 inserts of 12m boom top pulley block;
- The extension jib is installed on the boom top.

Fixed jib

- The fixed jib is a spatial lattice structure of welded tubes with equal section areas of inserts and tapered sections for two ends. The jib top and root are strengthened with steel plates, which is easier for load transfer;
- The length of the fixed jib is 12m;
- Compositions: jib base 6m×1, jib top 6m×1.

Luffing jib

- The luffing jib is a spatial lattice structure of welded tubes with equal section areas of inserts and tapered sections for two ends. The jib top and root are strengthened with steel plates, which is easier for load transfer;
- The length of the luffing jib is 30m~114m;
- Compositions: jib base 10.5m×1, boom insert (H8D)12m×1, tapered section 6m×1, insert 6m×2, insert 12m×6, jib top 1.5m×1;
- The extension jib is installed on the jib top.

Superlift device

- The superlift mast is a spatial lattice structure of welded tubes with equal section areas of inserts and tapered sections for two ends. The mast base and top are strengthened with steel plates, which is easier for load transfer;
- The length of the superlift mast is 42m;
- Compositions: superlift base 12m×1, insert 6m×1, insert 12m×1, top 12m×1.

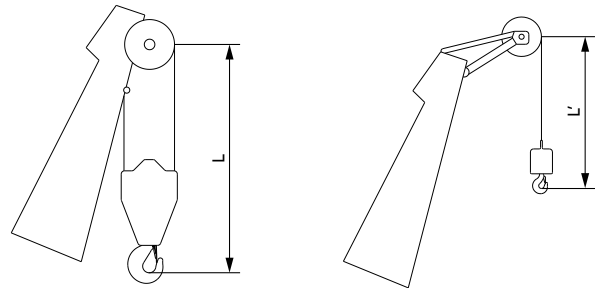
Hook

- There are 5 types of hook available. The specific parameters are as follows:

Hook	Maximum lifting capacity	Quantity	Number of pulleys	Unit weight (t)
1250t hook (decomposable)	1250t	1	2×15	35.9
800t hook (dual pulley block)	800t	1	2×11	22.3
500t hook (dual pulley hook)	500t	1	2×6	14.5
350t hook (dual pulley block)	350t	1	2×5	13.3
250t hook (dual pulley block)	250t	1	2×3	11.9
25t ball hook(no pulley)	25t	1	0	1.7

Note: The 1250t hook can be decomposed into 650t hook.

Hook limitation height



Hook	L
1250t	10.38m
800t	8.4m
500t	7.6m
350t	7.56m
250t	7.26m

Hook	L'
25t	6.3m



Product Specification

Additional device

- Lower structure jack cylinders;
- Crawler self-assembly cylinder (on the boom hoist mast);
- Portable power pack.

Counterweight

- The counterweight includes the carbody counterweight, rear counterweight, superlift counterweight, and the specific parameters are as follows:

Name	Quantity	Length (m)	Width (m)	Height (m)	Unit weight (t)
Carbody counterweight	6	2.40	2.85	0.484	10
Carbody counterweight tray	2	3.00	3.666	1.465	15
Rear counterweight	22	2.40	2.85	0.484	10
Rear counterweight tray	2	3.35	2.86	2.96	15
Superlift counterweight	52	2.40	2.85	0.484	10
Superlift counterweight tray	1	10.124	3.00	1.014	30

Hydraulic system

- Hydraulic system includes load hoist hydraulic system, traveling hydraulic system, slewing hydraulic system, boom hoist hydraulic system, servo hydraulic system, back-stop hydraulic system, cooling system, auxiliary hydraulic system. The main hydraulic components are original parts imported.
- Characteristics: The load hoisting, traveling, boom hoist and slewing hydraulic systems are of closed loop type, featuring energy saving, high efficiency, quick response, low heat radiation and long service life;
- The servo system adopts electrical proportional control components to facilitate the accurate and intelligent control;
- The back-stop hydraulic system adopts balance valve of external control and unloading, and it is mounted on the cylinder to make sure it is safe and reliable;
- The cooling system is characterized by higher power and quicker cooling.

Working weight

- The working weight is about 777t, including superstructure, lower structure, rear counterweight, carbody counterweight, 30m base boom and 1250t hook.

Ground pressure

- The average ground bearing pressure of the crane with base boom is 0.14 MPa.

Gradeability

- The gradeability of the crane with base boom is 20%.

Safety Devices



Load Moment Indicator

- The proprietary load moment limiter independently -developed by Sany is adopted, which forms a network with other controllers through CAN bus line, so as to realize safe and reliable control. The load moment limiter can automatically detect the hoisting weight of the crane and the angle of the boom, and display the rated load capacity, actual load, working radius, and the allowable height of the hook.
- The load moment limiter system consists of a large-screen color display, a host computer, angle sensors, tension sensors, pressure sensors and other components.

Over-hoist Protection of the Main and Auxiliary Hooks

- It is used to prevent the over-hoist of the hook. When the lifting hook is raised to a certain height, the limit switch will start working, and hook will be automatically cut off from moving up by the control system. Meanwhile, the display and the buzzer will give alarms. At this moment, only hook lowering is allowed to prevent over-hoist action.

Over-release Protection Device of the Main and Auxiliary Hook

- It is used to prevent the wire rope over-release. When the wire rope is released to the last three wraps, the limit switch will start working, and the releasing of rope will be automatically stopped by the control system. Meanwhile, the display and the buzzer will give alarms. At this moment, only rope retraction is allowed to prevent over release action.

Boom Angle Limit

- When the elevation angle of the boom exceeds 85° or jib angle exceeds 75° , corresponding limit switch will be triggered, and the control system will automatically cut off the boom hoisting. Meanwhile, the display and the buzzer will give alarm. At this moment, boom/jib luffing winch won't hoist but it can still lower down.
- When the boom down angle is less than 30° or jib down angle is less than 15°, the control system will automatically cut off the boom/jib from further lowering. Meanwhile, the display and the buzzer will give alarms. At this moment, boom/jib luffing winch won't be able to lower. This protection is automatically controlled by Load Moment Limiter.

Back-stop Device

- The boom and the superlift mast are respectively equipped with a pair of back-stop cylinders. The high pressure of the cylinder shall be overcome when the boom tilts backwards, and high pressure oil will be supplemented automatically when the boom swings forwards to increase the tension and prevent the boom vibration and shaking back.
- The jib rear mast is equipped with a pair of back-stop cylinders, while the jib front mast is equipped with a pair of pneumatic cylinders to prevent the mast from the backward inclination and tension of the jib luffing wire rope.

Brake of Hoisting Mechanism

- All hoisting brakes are spring loaded normally closed disc brakes, which are featured with large braking force, maintenance-free, safe and reliable use, and long service life.

Closed Circuit Monitoring System

- It can be used to monitor the winding conditions of wire ropes of each hoisting mechanism, the conditions of superlift weight, and conditions around the equipment.
- Video recorder can store video as long as 76 hours.
- Machine operation can be recorded.

Failure Auto-Diagnosis System

- Failure code can help troubleshooting easily.



Safety Devices

Black Box

- It is able to record the operation data and machine movement, and analyze the remaining running conditions and service life of machine based on the actual performance.

Pharos

- It is mounted on the top of the boom/jib and alerts in air during night.

Anemometer

- It is mounted on the top of the boom/jib to monitor the wind speed in real time and display relative data on the monitor.

Electronic Level Indicator

- It displays the tilting angle of the crane on the monitor in real time and protects the safe operation of the crane.

Lightning Protection Device

- It includes the lightning protection device and the surge protection device, which can effectively protect the electric system elements and workers from lightning.

Hook Latch

- The lifting hook is installed with a baffle plate to prevent wire rope from falling off.

Swing and Travel Visual-Audio Alarm

- When the machine is swinging or traveling, the horn will send out alarm per certain frequency, and warning indicator light flashes, to warn the people around the machine. This can be turned off in the control system.

Function Lock

- The operation will be locked by pulling up the function locking lever on the right side of the seat inside the driver's cab or when the operator left the seat, after which no operating handles will be working so that improper operation caused by the body collision when getting on and off the crane can be avoided.

Regulation of Engine Power Ultimate Load and Stalling Protection

- The controller can monitor the engine power so as to prevent stalling.

Remote Monitoring System

- It monitors and analyzes the operation data so as to realize remote diagnosis of faults and timely solution.

Proactive Safety Control Technology

- Swing speed can be automatically reduced based on boom length to make it safer;
- Flexible safety protection reduces the speed when the mechanism approaches to the safety limit position, which ensures reliability;
- Real-time monitor of hydraulic oil temperature allows limits on the action speed based on oil temperature, which protect the hydraulic components effectively;
- The protection can be set on man-machine interface as customer needs.



SCE16000A
SANY CRAWLER CRANE
1600 TONS LIFTING CAPACITY

QUALITY CHANGES THE WORLD

Technical Parameters

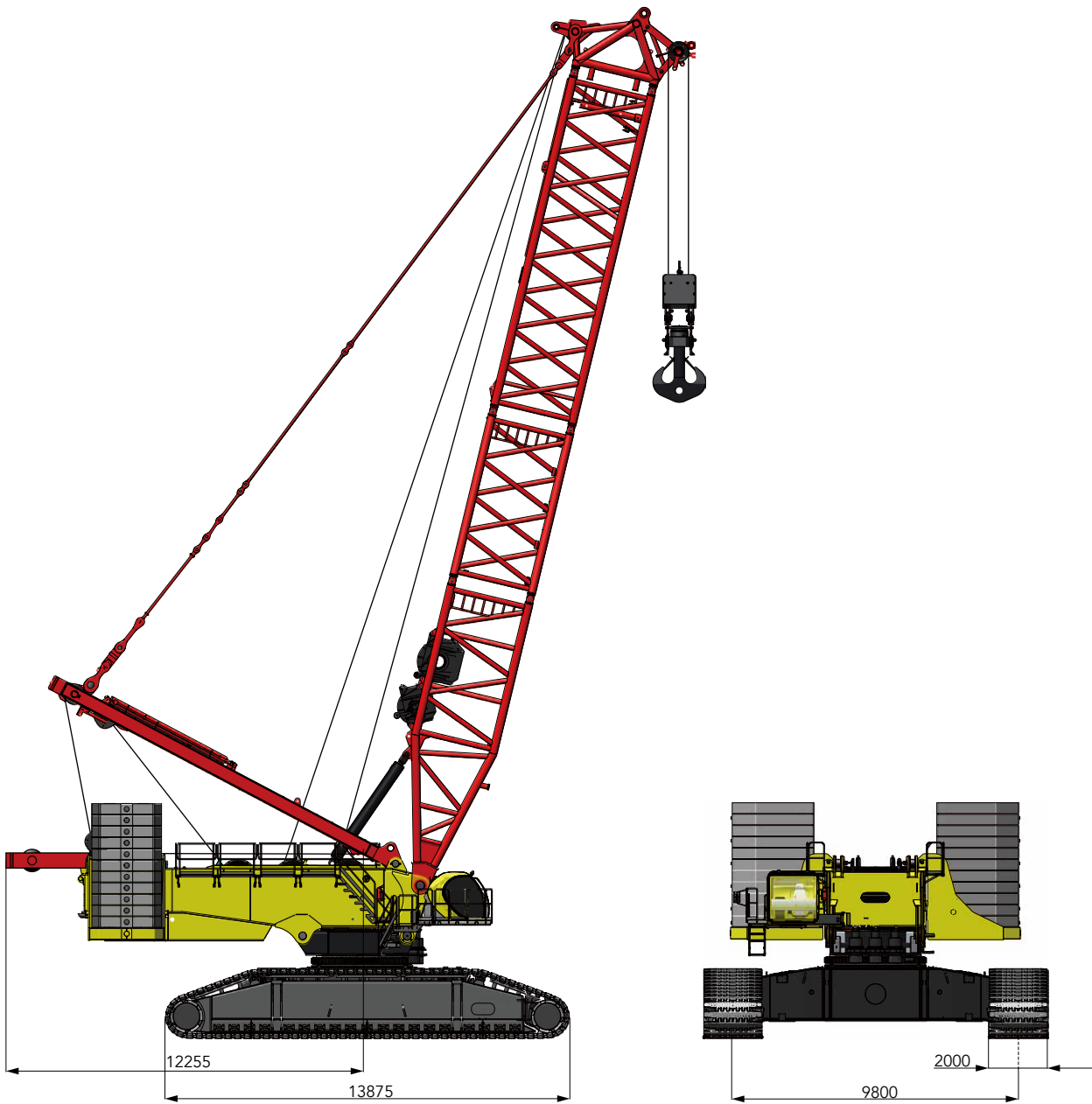
- Page 11 Main performance Parameters
- Page 12 Outline Dimension
- Page 14 Transportation Dimensions
- page 24 Assembly Procedure

> 10

Main Performance Parameters

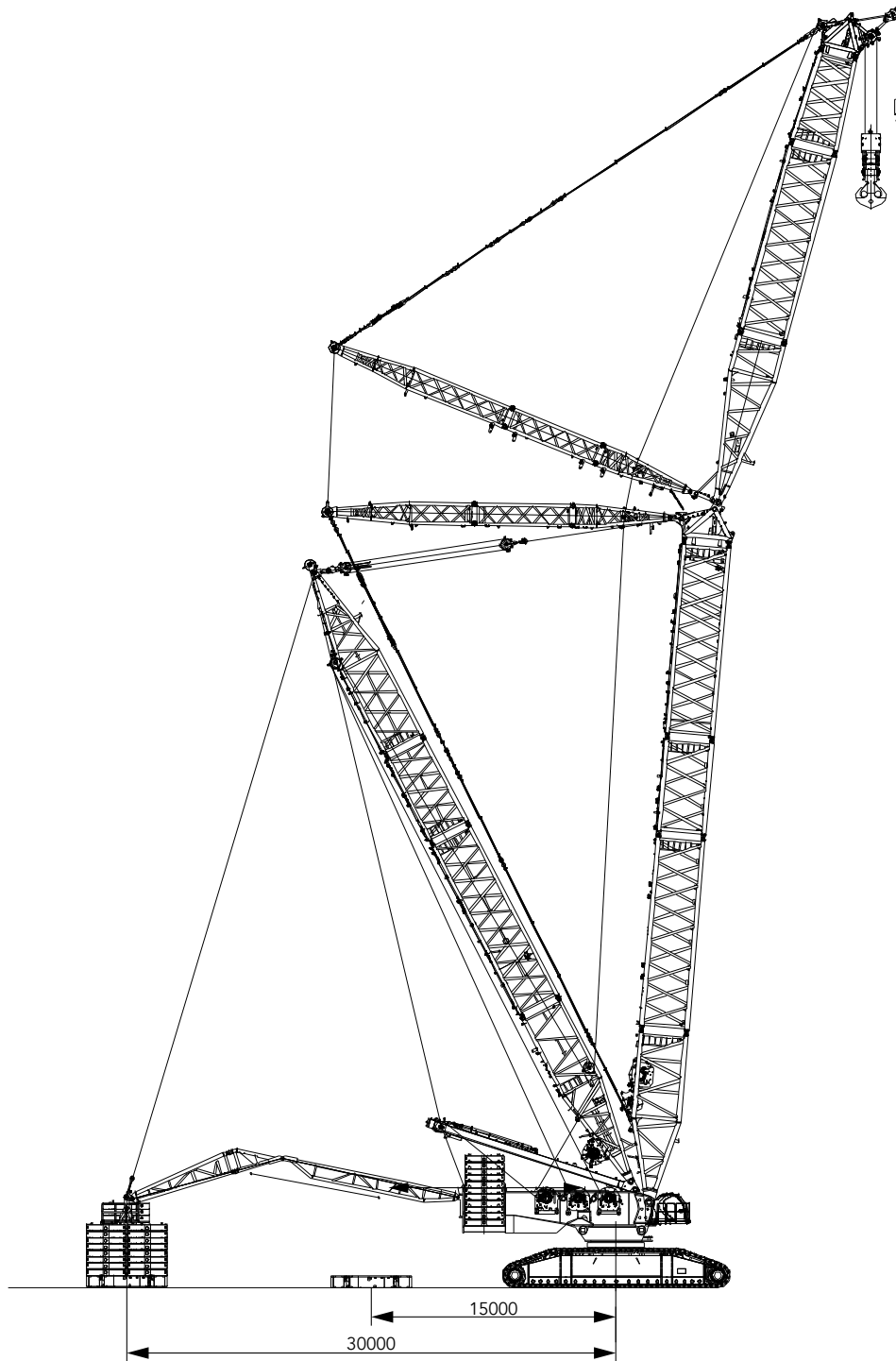
Major Performance & Specifications of SCE16000A		
Performance indexes	Unit	Parameter
Maximum rated lifting capacity	t	800 (7m operating radius)
Maximum rated lifting capacity (with superlift)	t	1600 (12m operating radius)
Maximum rated lifting moment	t·m	6060
Maximum rated lifting moment (with superlift)	t·m	19800
Boom length	m	30~96
Boom length (with superlift)	m	42~108
Mixed boom length	m	48~114
Mixed boom length (with superlift)	m	84~171
Luffing jib length	m	30~84
Luffing jib length (with superlift)	m	30~114
Length of short fixed jib	m	12
Longest boom combination (LJDB working condition)	m	108+114
Boom luffing angle	°	30~85
Jib luffing angle	°	15~75
Maximum rope speed of single rope of main load hoist winch (outermost working layer)	m/min	140
Maximum rope speed of single rope of aux. load hoist winch (outermost working layer)	m/min	140
Maximum rope speed of single rope of boom hoist mechanism (outermost working layer)	m/min	65×2
Maximum rope speed of single rope of jib luffing mechanism (outermost working layer)	m/min	130
Maximum rope speed of single rope of superlift luffing mechanism (outermost working layer)	m/min	140
Slewing speed (no load)	r/min	0.9
Travelling speed	km/h	0~0.8
Gradeability (with basic boom, cab facing backward)	%	20
Rated output power of the engine	kW/r/min	2×315/1800
Machine weight (basic boom, 250t machine rear counterweight, 90t carbody counterweight, with 1250t hook)	t	777
Average ground bearing pressure of the crawler (base boom, 250t machine counterweight, 90t carbody counterweight, 1250t hook)	MPa	0.14
Rear counterweight (including tray)	t	250
Superlift counterweight (including tray)	t	550
Carbody counterweight (including tray)	t	90
Maximum transportat dimensions of single piece (L×W×H)	mm	15300×3500×3200
Maximum transport weight of single piece	t	54

Outline Dimension

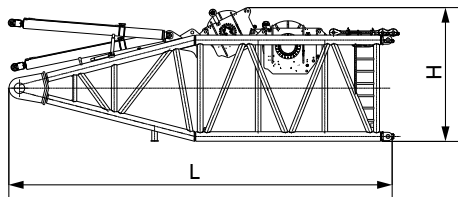
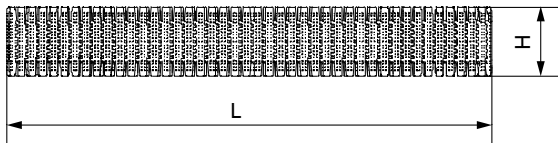
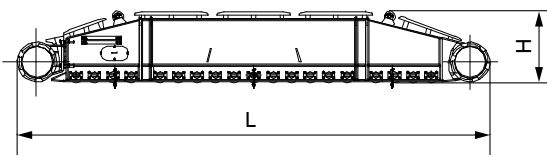
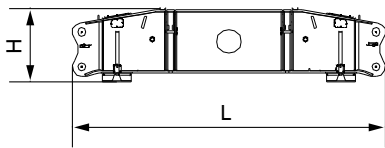
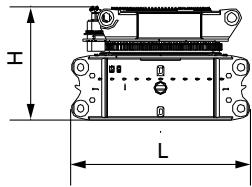
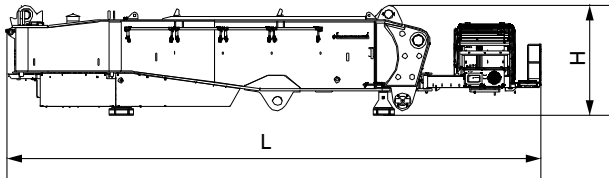


Unit: mm

Outline Dimension



Transport Dimension



Basic machine(with upper- and lowerworks separated)

×1

Length (L)	15.30m
Width (W)	3.50m
Height (H)	3.15m
Weight	53.6t

Center swing structure(carbody+adapter)

×1

Length (L)	5.14m
Width (W)	3.50m
Height (H)	3.24m
Weight	50.0t

Transverse beam

×2

Length (L)	9.00m
Width (W)	1.81m
Height (H)	2.11m
Weight	21.6t

Crawler frame assembly

×2

Length (L)	13.56m
Width (W)	2.07m
Height (H)	2.06m
Weight	43.4t

Track pad assembly

×2

Length (L)	13.92m
Width (W)	2.00m
Height (H)	2.38m
Weight	32.1t

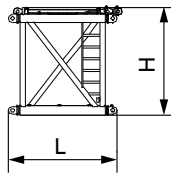
Boom base (H2)(with winch)

×1

Length (L)	10.92m
Width (W)	3.50m
Height (H)	3.20m
Weight	37.0t

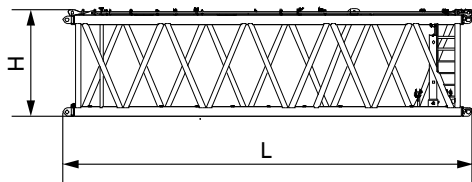
Note:aux. load hoist winch 5.4t, jib luffing winch 10.9t.

Transport Dimension



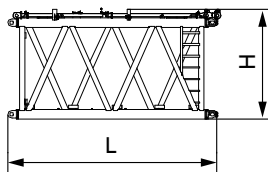
3m transitional insert(H3) ×1

Length (L)	3.24m
Width (W)	3.50m
Height (H)	3.23m
Weight	4.5t



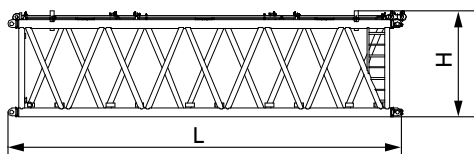
12m transitional insert (H4) ×1

Length (L)	12.24m
Width (W)	3.50m
Height (H)	3.19m
Weight	14.9t



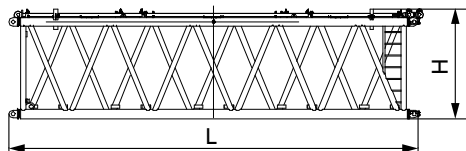
6m boom insert (H6) ×2

Length (L)	6.24m
Width (W)	3.50m
Height (H)	3.28m
Weight	8.2t



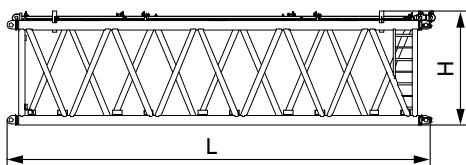
12m boom insert (H8A) ×2

Length (L)	12.24m
Width (W)	3.50m
Height (H)	3.28m
Weight	15.4t



12m boom insert (H8B) ×2

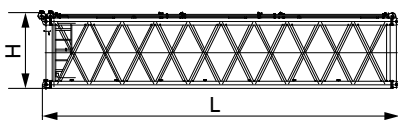
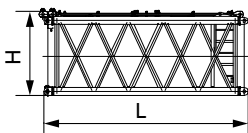
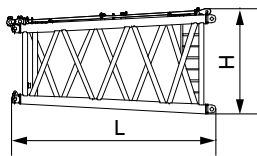
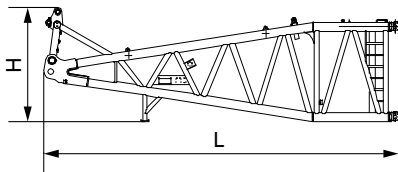
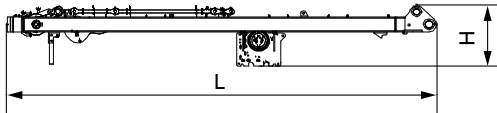
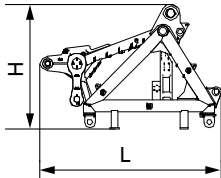
Length (L)	12.24m
Width (W)	3.50m
Height (H)	3.28m
Weight	15.4t



12m boom insert (H8D) ×1

Length (L)	12.24m
Width (W)	3.50m
Height (H)	3.28m
Weight	11.2t

Transport Dimension



Connecting tip(H9) ×1

Length (L)	4.17m
Width (W)	3.50m
Height (H)	2.87m
Weight	9.9t

Boom hoist mast ×1

Length (L)	13.7m
Width (W)	2.87m
Height (H)	1.94m
Weight	28.2t

Note: including boom hoist winch 9.04t.

Luffing jib base (LJ2) ×1

Length (L)	10.83m
Width (W)	3.50m
Height (H)	3.47m
Weight	13.5t

6m jib tapered insert(LJ4) ×1

Length (L)	6.24m
Width (W)	3.50m
Height (H)	3.21m
Weight	5.8t

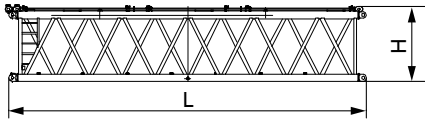
Luffing jib insert(LJ6) ×2

Length (L)	6.23m
Width (W)	3.00m
Height (H)	2.57m
Weight	5.13t

Luffing jib insert(LJ8A) ×2

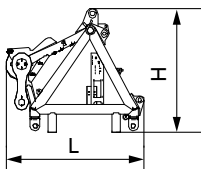
Length (L)	12.23m
Width (W)	3.00m
Height (H)	2.57m
Weight	8.33t

Transport Dimension



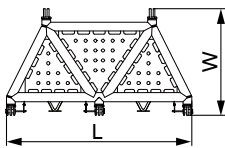
Luffing jib insert(LJ8B) ×4

Length (L)	12.23m
Width (W)	3.00m
Height (H)	2.57m
Weight	7.58t



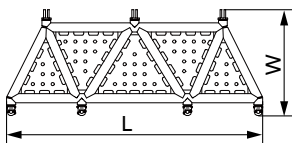
Jib tip (LJ9) ×1

Length (L)	3.04m
Width (W)	3.04m
Height (H)	2.74m
Weight	5.51t



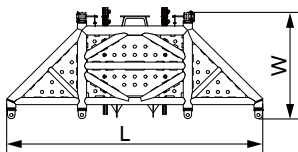
SY4A ×1

Length (L)	5.69m
Width (W)	3.24m
Height (H)	3.19m
Weight	9.05t



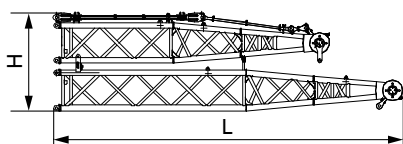
SY4B ×1

Length (L)	7.79m
Width (W)	3.24m
Height (H)	3.20m
Weight	12.43t



SY4C ×1

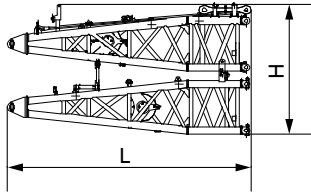
Length (L)	7.79m
Width (W)	3.24m
Height (H)	3.12m
Weight	10.66t



Rear and front mast top of luffing jib ×1

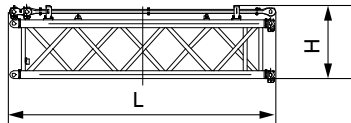
Length (L)	11.94m
Width (W)	2.98m
Height (H)	3.34m
Weight	13.0t

Transport Dimension



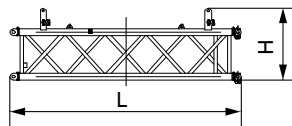
Rear and front mast base of luffing jib ×1

Length (L)	6.25m
Width (W)	2.89m
Height (H)	3.34m
Weight	7.3t



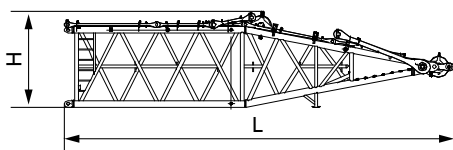
6m front mast of luffing jib ×1

Length (L)	6.24m
Width (W)	2.97m
Height (H)	1.71m
Weight	2.88t



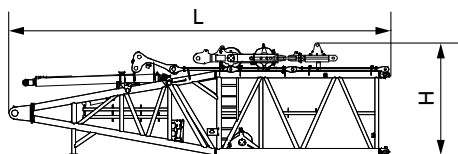
6m rear mast of luffing jib ×1

Length (L)	6.18m
Width (W)	2.13m
Height (H)	1.94m
Weight	2.21t



Superlift mast top (D1) ×1

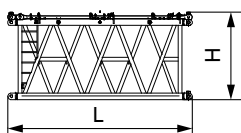
Length (L)	13.02m
Width (W)	3.45m
Height (H)	3.20m
Weight	15.9t



Superlift mast base(D2)(with winch) ×1

Length (L)	12.32m
Width (W)	3.50m
Height (H)	3.64m
Weight	39.7t

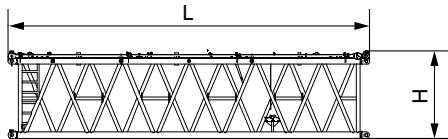
Note: superlift luffing winch 12.65t.



6m Superlift mast insert(D4) ×1

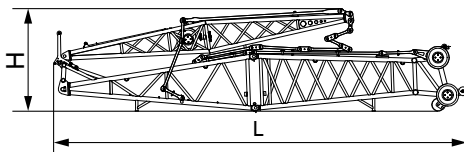
Length (L)	6.24m
Width (W)	3.49m
Height (H)	2.89m
Weight	6.23t

Transport Dimension



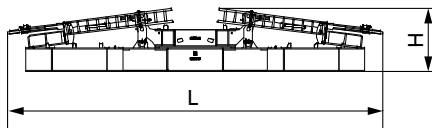
12m superlift mast insert(D6) ×1

Length (L)	12.24m
Width (W)	3.49m
Height (H)	2.89m
Weight	11.37t



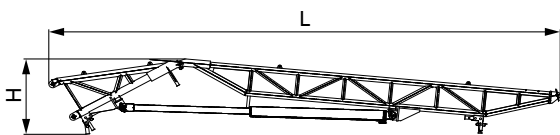
Fixed jib ×1

Length (L)	12.91m
Width (W)	2.33m
Height (H)	3.20m
Weight	8.5t



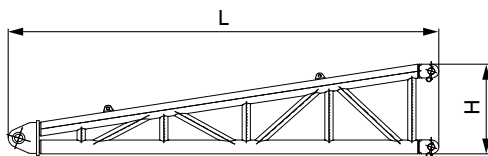
Superlift counterweight frame ×1

Length (L)	11.21m
Width (W)	3.00m
Height (H)	1.87m
Weight	32.0t



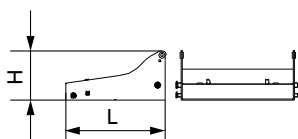
Superlift strut stage 1 and 2 (including cylinder) ×1

Length (L)	14.84m
Width (W)	3.45m
Height (H)	2.41m
Weight	10.6t



Superlift strut stage 3 ×1

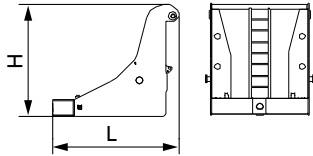
Length (L)	6.26m
Width (W)	3.45m
Height (H)	1.42m
Weight	3.8t



Carbody counterweight tray ×2

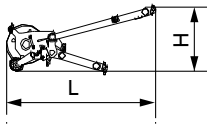
Length (L)	2.98m
Width (W)	3.67m
Height (H)	1.47m
Weight	15.0t

Transport Dimension



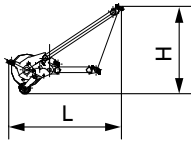
Rear counterweight tray ×2

Length (L)	3.35m
Width (W)	2.86m
Height (H)	2.96m
Weight	15.0t



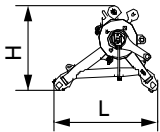
Boom extension jib ×1

Length (L)	2.65m
Width (W)	1.27m
Height (H)	1.41m
Weight	0.58t



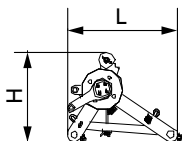
Luffing jib extension jib ×1

Length (L)	2.44m
Width (W)	1.13m
Height (H)	1.90m
Weight	0.58t



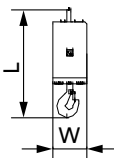
Pulley block (650t) ×2

Length (L)	1.85m
Width (W)	1.67m
Height (H)	1.51m
Weight	2.1t



Pulley block (1250t) ×2

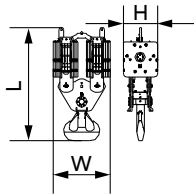
Length (L)	1.85m
Width (W)	2.09m
Height (H)	1.94m
Weight	3.7t



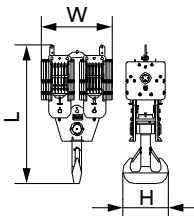
25t hook ×1

Length (L)	1.64m
Width (W)	0.54m
Height (H)	0.54m
Weight	1.7t

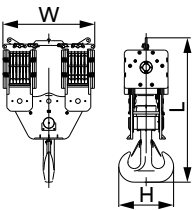
Transport Dimension



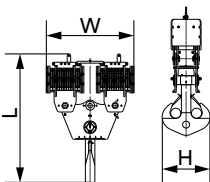
250t hook	×1
Length (L)	3.66m
Width (W)	1.83m
Height (H)	1.10m
Weight	11.9t



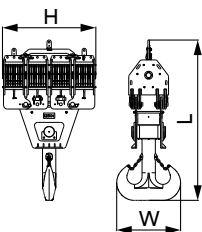
350t hook	×1
Length (L)	4.02m
Width (W)	2.04m
Height (H)	1.33m
Weight	13.3t



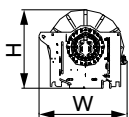
500t hook	×1
Length (L)	3.96m
Width (W)	2.52m
Height (H)	1.50m
Weight	14.5t



800t hook	×1
Length (L)	5.06m
Width (W)	3.45m
Height (H)	1.89m
Weight	22.3t

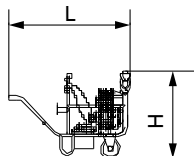
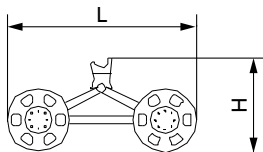
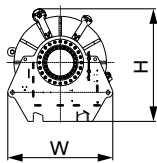
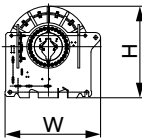
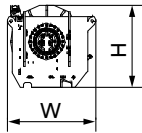
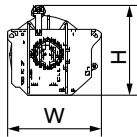


1250t hook	×1
Length (L)	6.02m
Width (W)	3.51m
Height (H)	2.40m
Weight	35.9t



Main load hoist winch	×2
Length (L)	2.15m
Width (W)	1.68m
Height (H)	1.50m
Weight	12.7t

Transport Dimension



Aux. load hoist winch ×1

Length (L)	2.06m
Width (W)	1.50m
Height (H)	1.44m
Weight	5.4t

Jib luffing winch ×1

Length (L)	2.06m
Width (W)	1.76m
Height (H)	1.63m
Weight	10.9t

Boom hoist winch ×1

Length (L)	2.48m
Width (W)	1.56m
Height (H)	1.49m
Weight	9.04t

Superlift luffing winch ×1

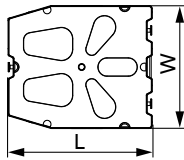
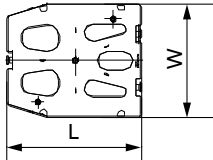
Length (L)	2.15m
Width (W)	1.64m
Height (H)	1.75m
Weight	12.65t

Trolley ×1

Length (L)	3.10m
Width (W)	2.14m
Height (H)	1.40m
Weight	1.8t

Portable power pack ×1

Length (L)	1.55m
Width (W)	0.70m
Height (H)	1.08m
Weight	0.2t

Transport Dimension**10t counterweight block****×79**

Length (L)	2.85m
Width (W)	2.40m
Height (H)	0.45m
Weight	10.0t

5t counterweight block**×2**

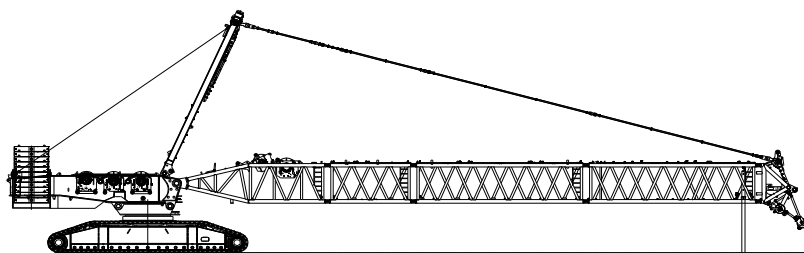
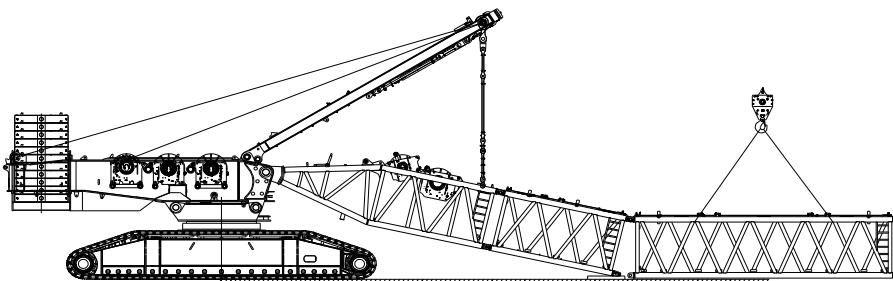
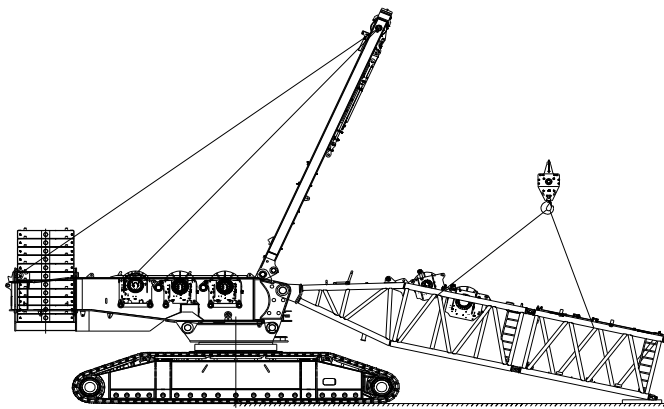
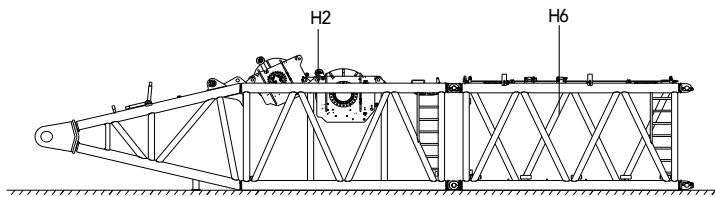
Length (L)	2.85m
Width (W)	2.40m
Height (H)	0.26m
Weight	5.0t

Note:

- 1.The transport dimensions of each part are schematic, may not be proportional to the real parts. The dimensions are designed value without package considered.
- 2.The weight is designed value that the actual manufactured part may deviate slightly.
- 3.The dimensions and weight of each part may upgrade along the time. The final values are subject to the new product.

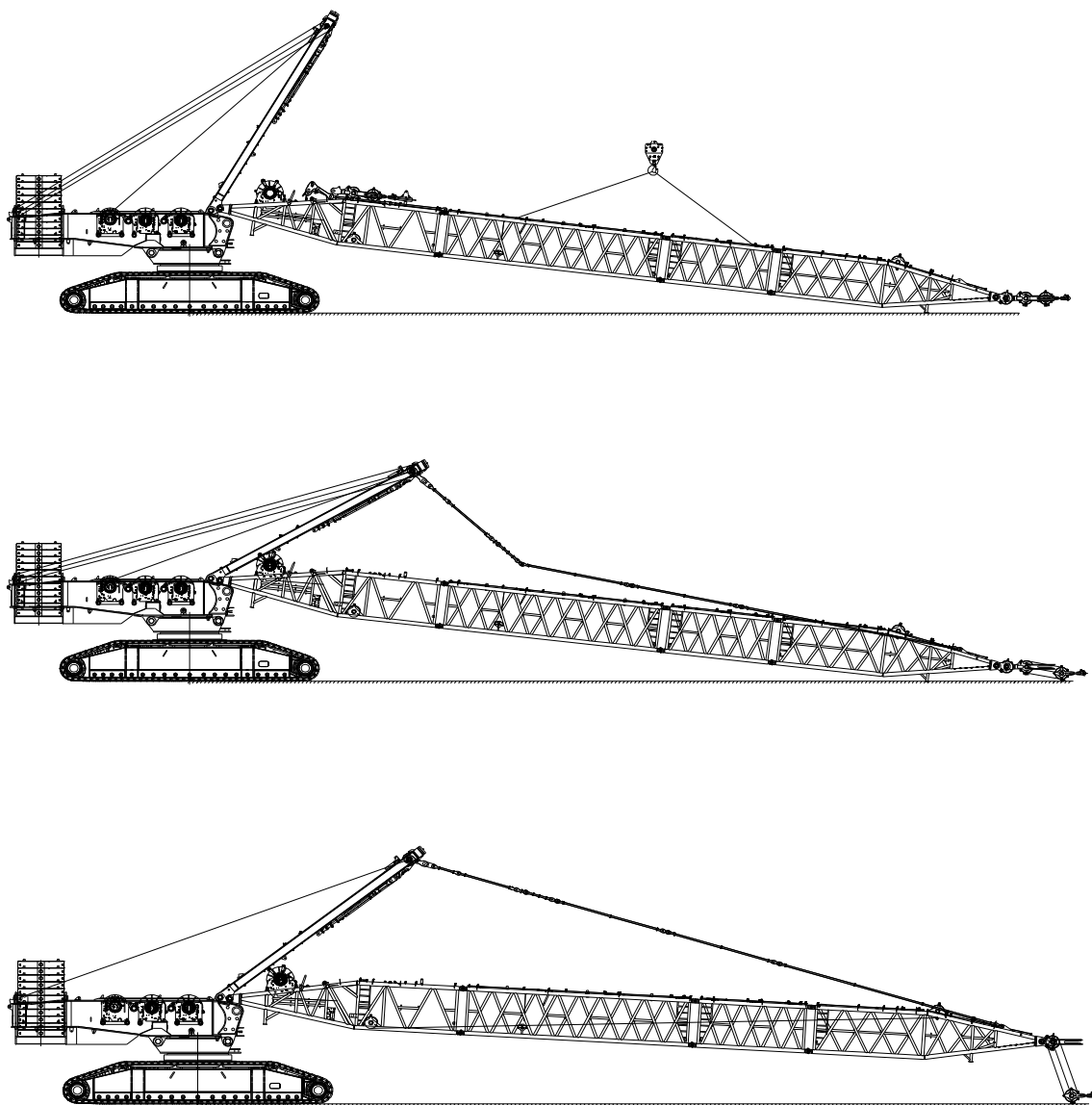
Assembly procedure

1. Boom assembly



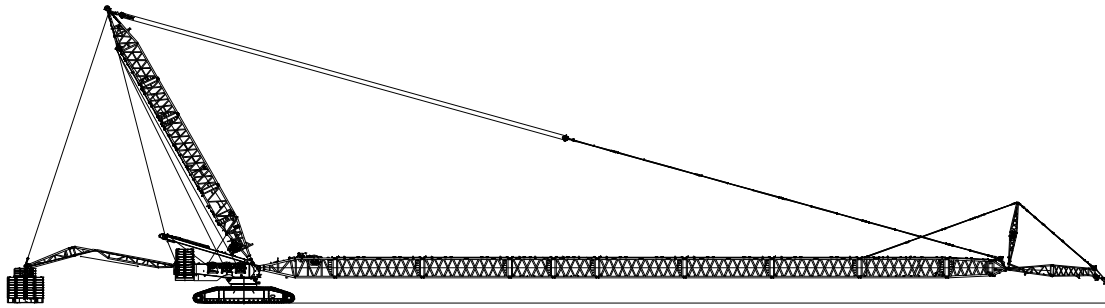
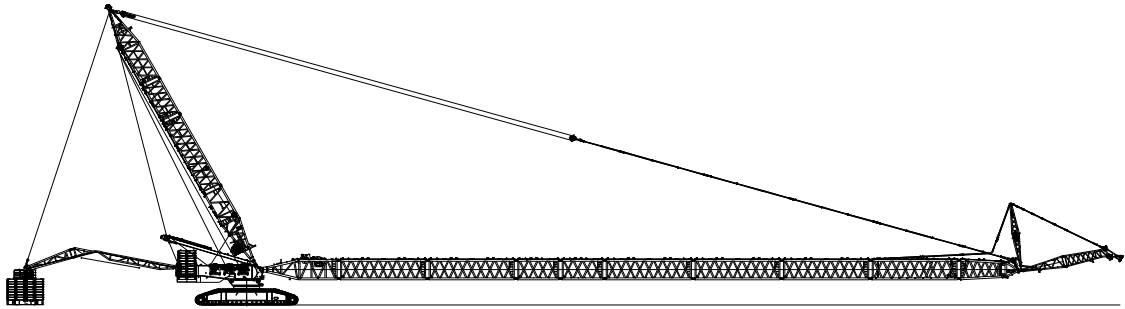
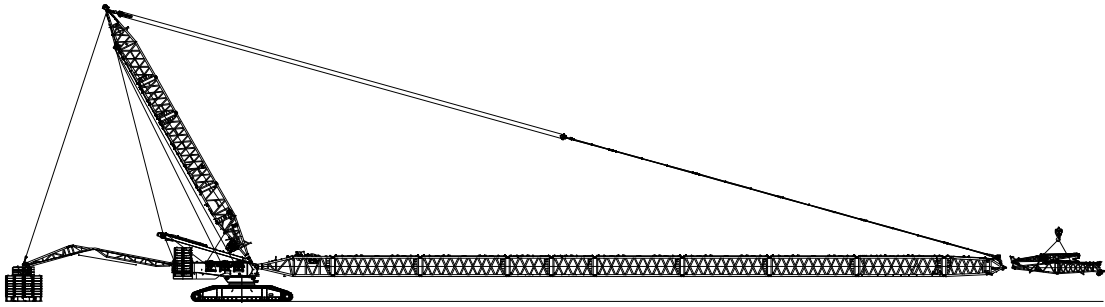
Assembly procedure

2. Superlift mast assembly



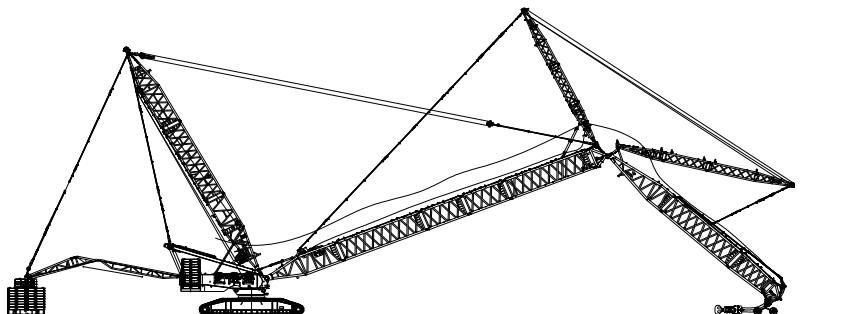
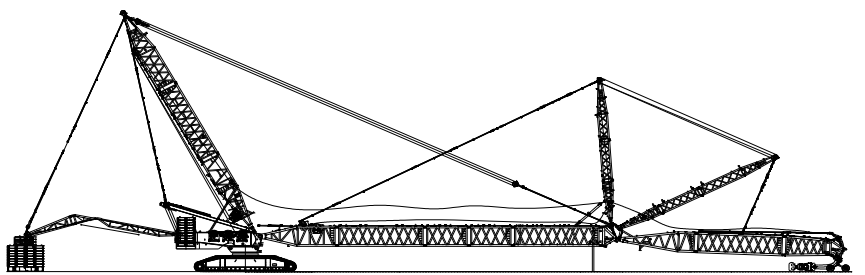
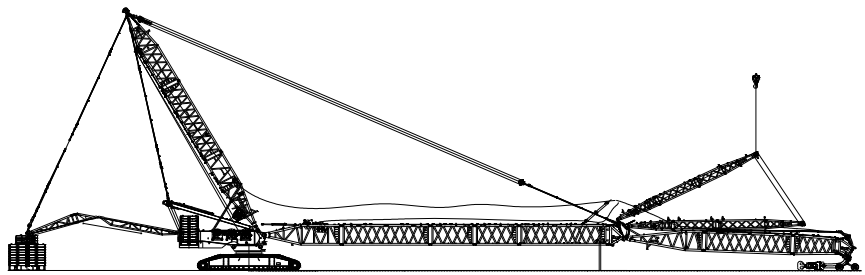
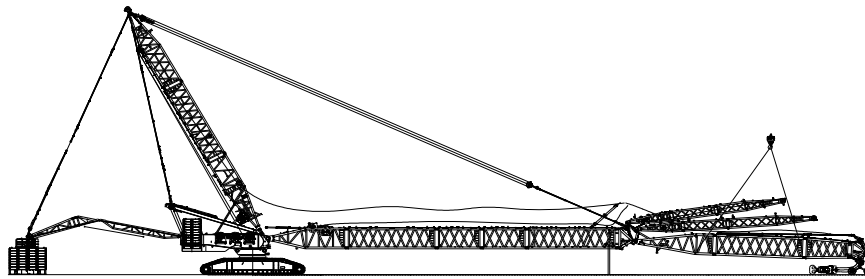
Assembly procedure

3. Fixed jib assembly



Assembly procedure

4. Luffing jib assembly



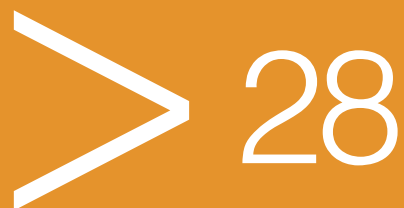


SCE16000A SANY CRAWLER CRANE 1600 TONS LIFTING CAPACITY

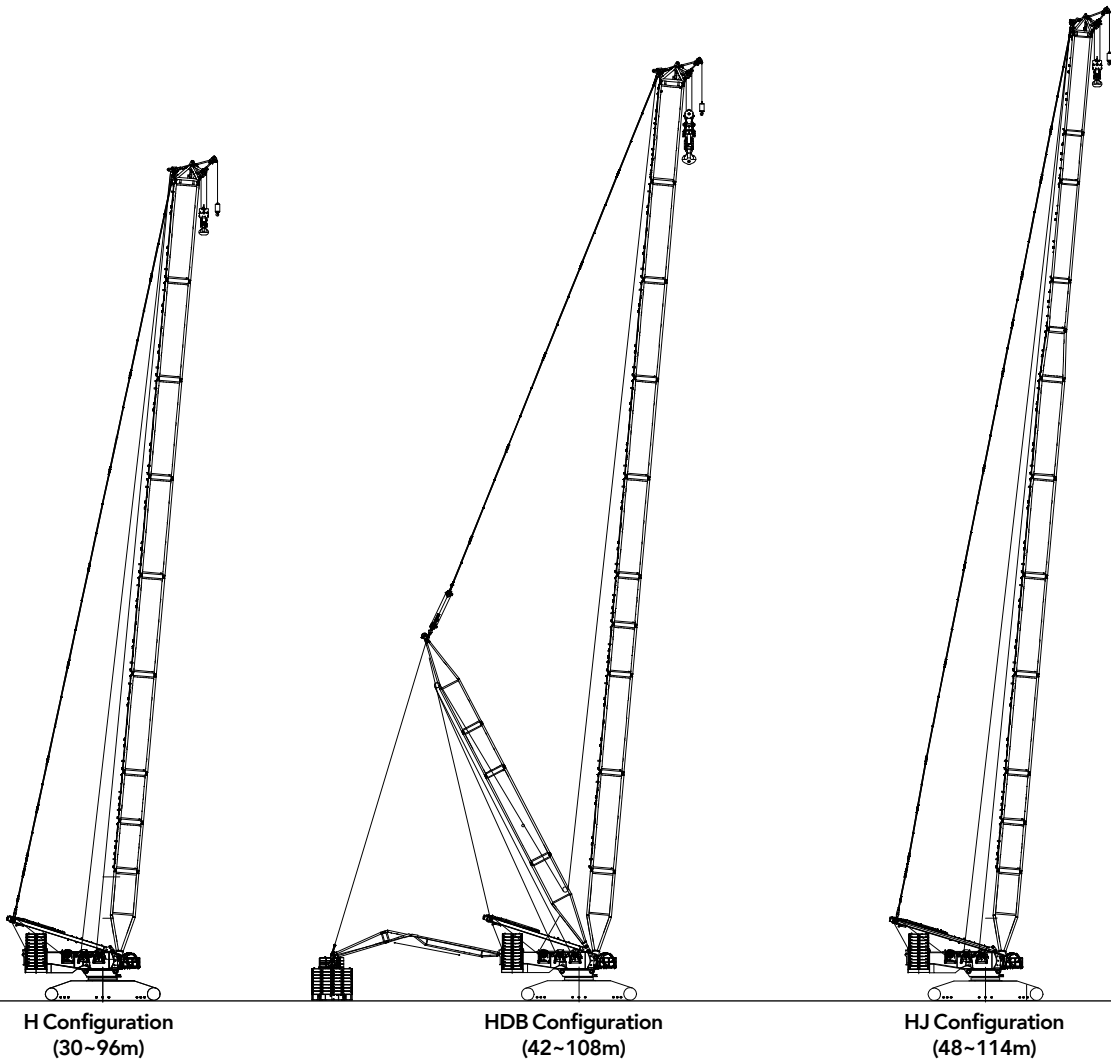
QUALITY CHANGES THE WORLD

Configurations

- Page 29 Configurations Combination
- Page 32 H Configuration
- Page 35 HDB Configuration
- Page 39 HJ Configuration
- Page 42 HJDB Configuration
- page 45 LJ Configuration
- page 50 LJDB Configuration
- page 63 HJFJDB Configuration
- page 66 HDB-SY4 Configuration
- page 69 HJDB-SY4 Configuration
- page 72 HJFJDB-SY4 Configuration



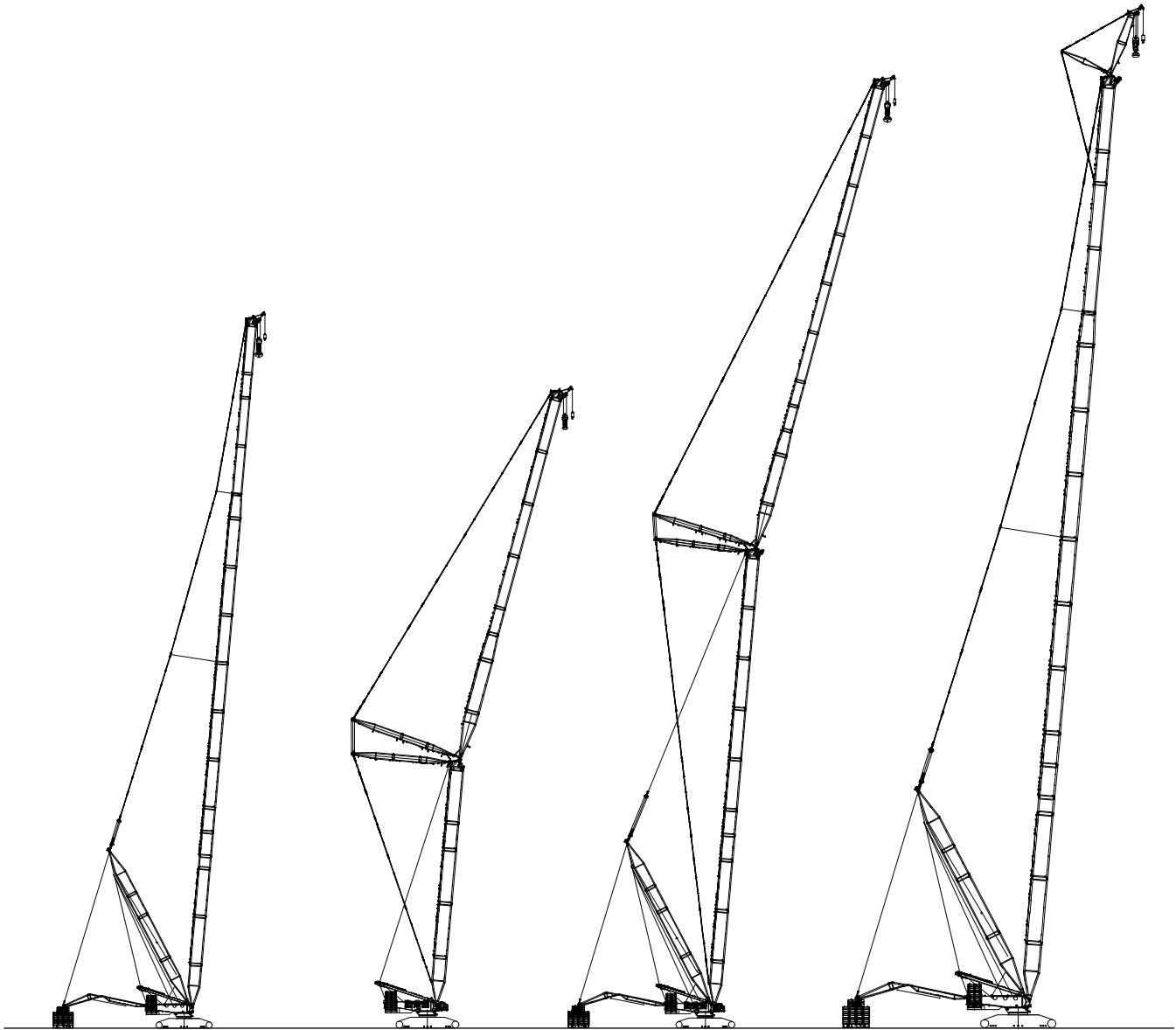
Combination



Configuration	Boom combination	Boom length
H	Boom	30m~96m
HDB	Boom + Superlift mast + Superlift counterweight	42m~108m
HJ	Mixed boom	48m~114m

Note: The schematics above are reference for loading only.

Combination



HJDB Configuration
(84m~171m)

LJ Configuration
(42m~54m+36m~84m)

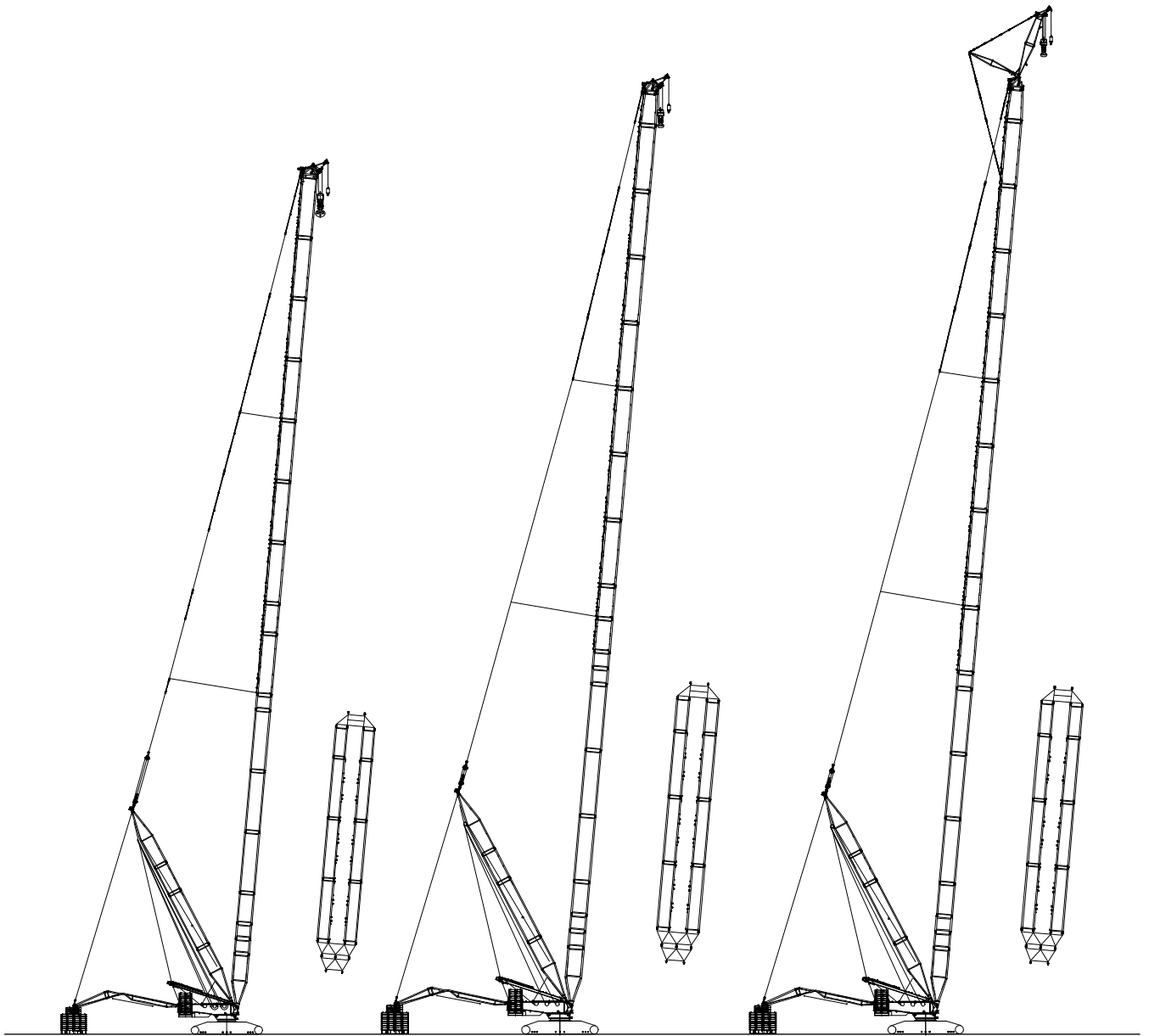
LJDB Configuration
(48m~108m+36m~114m)

HJFJDB Configuration
(102m~171m)+12m

Configuration	Boom combination	Boom length
HJDB	Mixed boom + Superlift mast + Superlift counterweight	84m~171m
LJ	Boom + luffing jib	42m~54m+36m~84m
LJDB	Boom + luffing jib + Superlift mast + Superlift counterweight	48m~108m+36m~114m
HJFJDB	mixed boom +fixed jib +Superlift mast + Superlift counterweight	(102m~171m) +12m

Note: The schematics above are reference for loading only.

Combination



HDB-SY4
(78m~165m)

HJDB-SY4
(84m~168m)

HJFJDB-SY4
(132m~171m)+12m

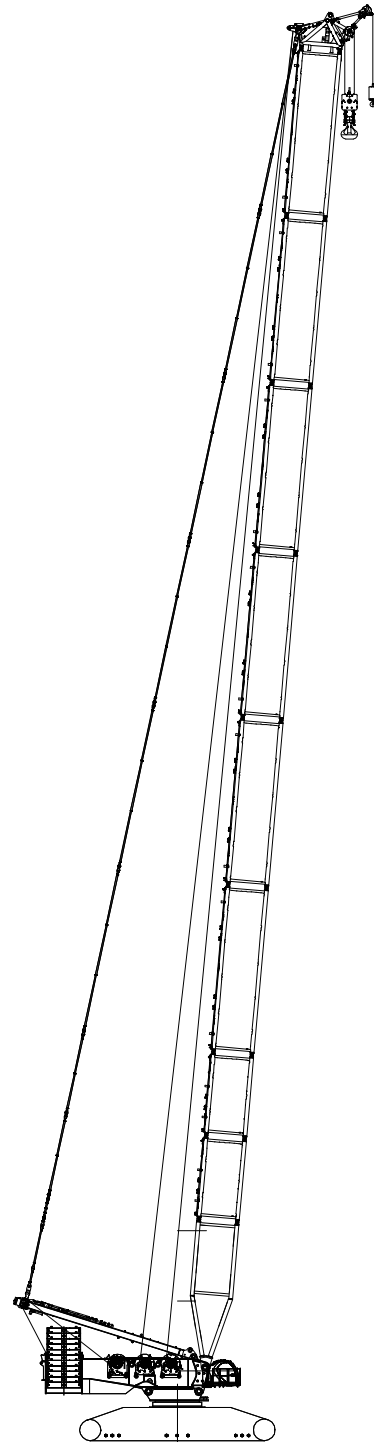
Configuration	Boom combination	Boom length
HDB-SY4	Super power boom+Superlift mast+Superlift counterweight	78m~165m
HJDB-SY4	Super power boom+Superlift mast+Superlift counterweight	84m~168m
HJFJDB-SY4	Super power boom+Fixed jib+Superlift mast+Superlift counterweight	(132m~171m) +12m

Note: The schematics above are reference for loading only.

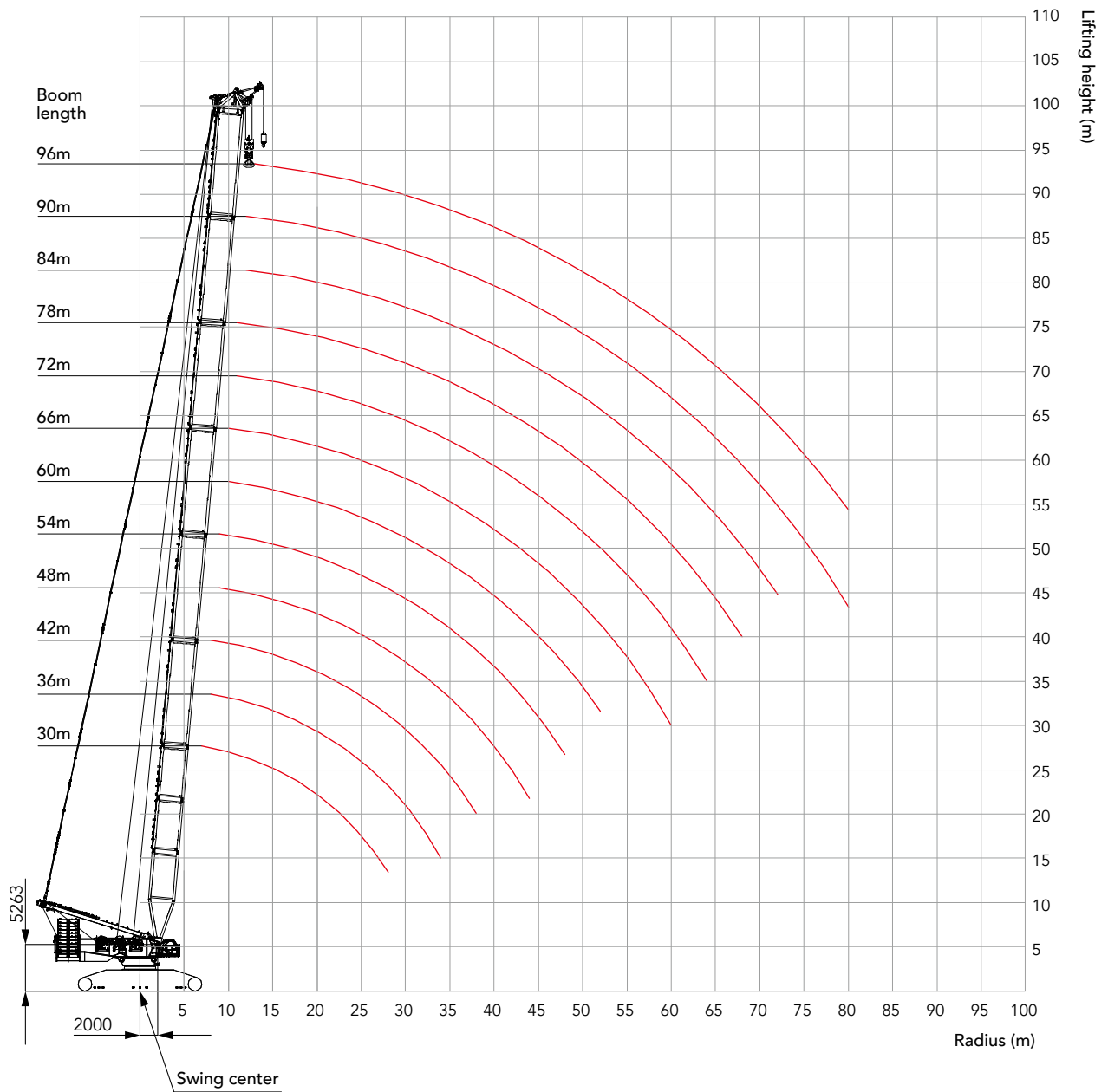
Combination of H configuration

Combination of H configuration			
Boom length (m)	Boom insert		
	6m	12mA	12mB
30	1	-	-
36	2	-	-
42	1	1	-
48	2	1	-
54	1	2	-
60	2	2	-
66	1	3	-
72	2	3	-
78	1	3	1
84	2	3	1
90	1	3	2
96	2	3	2

Note: 24m basic boom consists of 10.5 boom base, 12m transitional insert and 1.5m boom top.



Working range of H



Load chart of H Configuration

Note:

1. Meet the ISO4305 standard;
2. The superlift counterweight cannot leave the ground in the configurations marked with *;
3. The actual lifting capacity must subtract the weight of hooks, wire rope and other riggings from the rated capacity in the load chart.

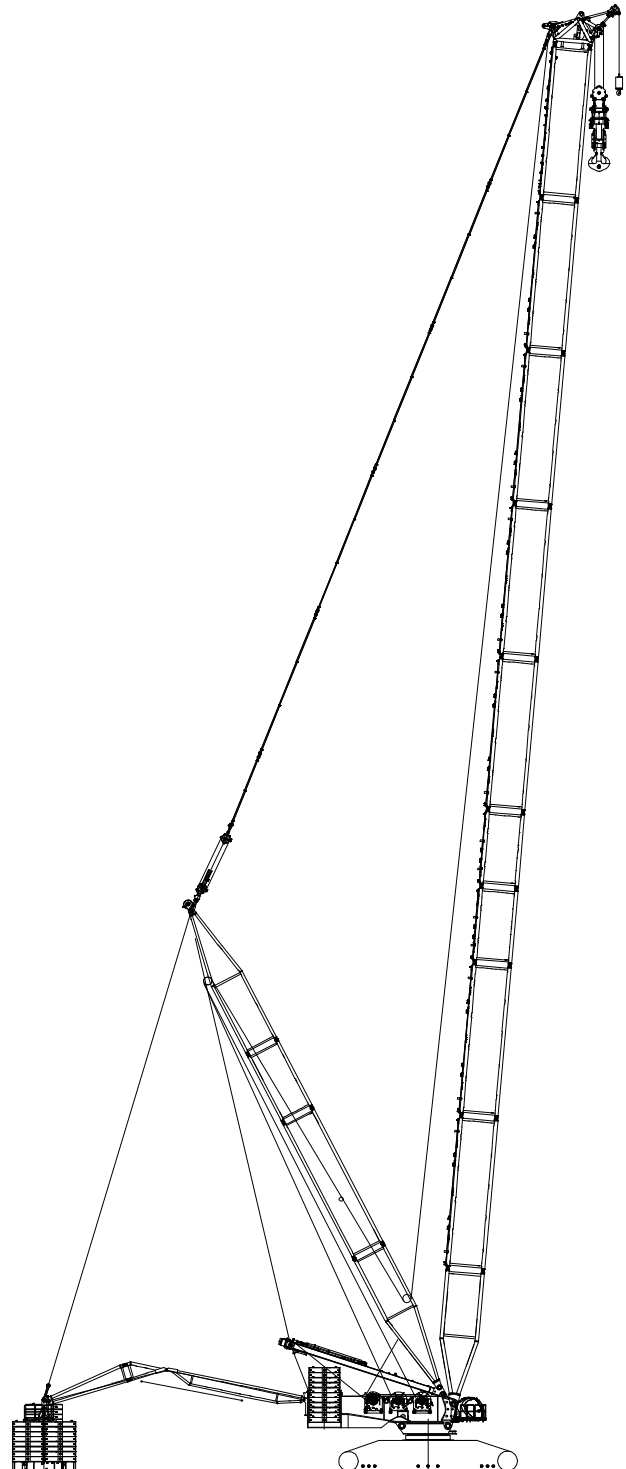
Load chart -H (Rear counterweight 250t, Carbody counterweight 90t)

Boom 30m~96m													
BL/R (m)	30	36	42	48	54	60	66	72	78	84	90	96	BL/R (m)
7	844												7
8	716	715	713										8
9	621	619	618	615	613								9
10	548	546	544	542	539	537	535						10
11	489	487	485	483	480	478	476	473	471				11
12	441	439	437	435	432	430	427	425	423	420	416		12
13	402	399	397	395	392	390	387	385	383	380	378	368	13
14	368	366	364	361	359	356	353	351	349	346	344	340	14
15	339	337	335	332	330	327	325	322	320	317	315	312	15
16	314	312	310	307	305	302	300	297	294	292	289	286	16
17	293	290	288	286	283	280	278	275	273	270	267	264	17
18	273	271	269	266	264	261	258	255	253	250	248	245	18
19	256	254	252	249	247	244	241	238	236	233	231	228	19
20	241	239	237	234	232	229	226	223	221	218	215	212	20
22	215	213	211	208	205	202	200	197	194	191	189	186	22
24	193	191	189	186	184	181	178	175	173	170	167	164	24
26	175	173	171	168	166	163	160	157	155	151	149	146	26
28	159	158	155	153	150	147	144	141	139	136	133	130	28
30		144	142	140	137	134	131	128	126	123	120	117	30
32		133	131	128	126	123	120	117	114	111	108	105	32
34		122	121	118	115	112	110	106	104	101	98.8	95.6	34
36			112	109	106	103	101	98	95.6	92.4	89.8	86.6	36
38			103	101	98.9	95.9	93.1	90	87.6	84.4	81.8	78.6	38
40				94.1	91.7	88.7	85.9	82.8	80.4	77.2	74.6	71.4	40
44				81.4	79.1	76.3	73.5	70.4	68	64.8	62.2	59	44
48					68.6	65.8	63.1	60	57.6	54.5	51.9	48.7	48
52						57	54.3	51.2	48.9	45.7	43.2	39.9	52
56							46.7	43.7	41.4	38.2	35.7	32.5	56
60								40	37.1	34.8	31.7	29.2	60
64									31.3	29.1	26	23.5	64
68										23.9	20.9	18.4	68
72											16.3	13.9	72
76												9.8	76
80													80
											6.1	3	

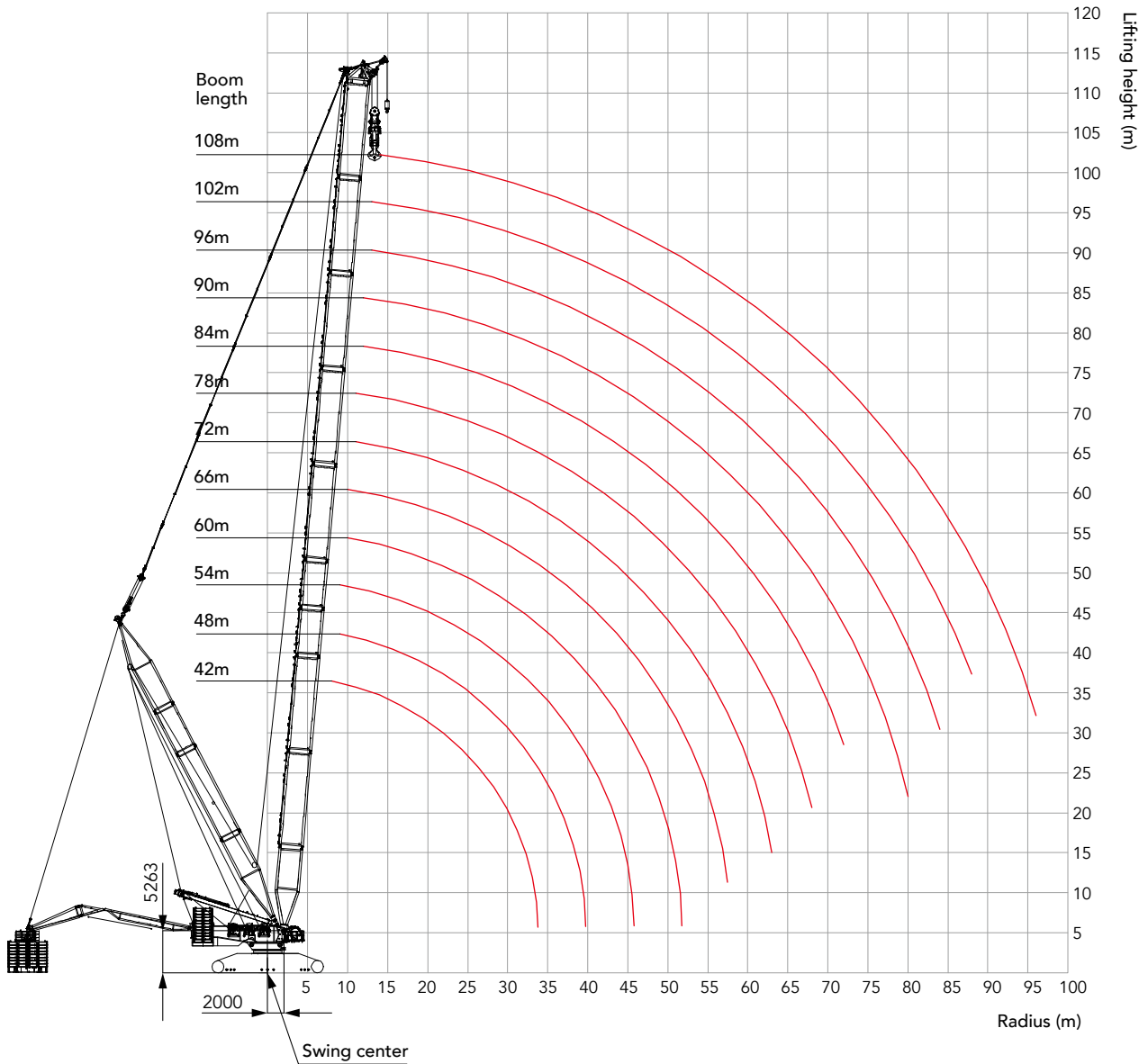
Combination of HDB configuration

Combination of HDB configuration			
Boom length (m)	Boom insert		
	6m	12mA	12mB
42	1	1	-
48	2	1	-
54	1	2	-
60	2	2	-
66	1	3	-
72	2	3	-
78	1	3	1
84	2	3	1
90	1	3	2
96	2	3	2
102	1	3	3
108	2	3	3

Note: 10.5 boom base, 12m transitional insert and 1.5m boom top are must.



Working range of HDB



Unit: t

Load chart of HDB Configuration

Note:

1. Meet the ISO4305 standard;
2. The superlift counterweight cannot leave the ground in the configurations marked with *;
3. The actual lifting capacity must subtract the weight of hooks, wire rope and other riggings from the rated capacity in the load chart.

Load chart -HDB (Superlift radius 30m, Superlift counterweight 550t, Rear counterweight 250t, Carbody counterweight 90t)													
Boom 42m~108m													
BL/R (m)	42	48	54	60	66	72	78	84	90	96	102	108	BL/R (m)
8	1250*												8
9	1250*	1250*	1250*										9
10	1250*	1250*	1250*	1140*	1060*								10
11	1250*	1250*	1250*	1140*	1060*	940*	899*						11
12	1250*	1250*	1250*	1140*	1060*	940*	899*	818*	777*				12
13	1250*	1250*	1250*	1140*	1060*	980*	899*	818*	777*	694*	609*		13
14	1250*	1250*	1250*	1140*	1060*	980*	899*	818*	777*	694*	610*	542*	14
15	1250*	1250*	1250*	1179*	1060*	980*	899*	818*	777*	699*	611*	542*	15
16	1225*	1222*	1220*	1179*	1060*	980*	899*	818*	777*	700*	612*	542*	16
17	1154*	1151*	1149*	1146*	1060*	980*	899*	818*	777*	700*	614*	544*	17
18	1091	1087*	1085*	1083*	1060*	980*	899*	818*	777*	700*	616*	546*	18
19	1033*	1030	1028	1025	1022	980*	899*	818*	777*	702*	615*	546*	19
20	982*	978	976	974	970	968	899*	818*	777*	704*	615*	546*	20
22	892	889	887	884	881	878	876	818*	777*	704*	618*	548*	22
24	817	814	812	809	806	803	801	798	777	706*	617*	550*	24
26	753	750	748	745	742	739	737	734	731	709	619*	548*	26
28	697	694	692	689	686	684	682	679	676	673	620*	549*	28
30	646	643	641	638	635	633	631	628	626	623	614	550*	30
32	601	598	596	594	591	588	586	583	581	578	576	551	32
34	562	559	557	555	552	549	547	544	542	539	537	527	34
36	528	525	523	520	517	515	513	510	508	505	502	499	36
38	488	494	492	489	486	484	482	479	477	474	471	468	38
40		466	464	462	459	456	454	451	449	446	444	441	40
44		419	417	414	411	408	407	404	401	398	396	393	44
48			377	374	372	369	367	364	362	359	357	354	48
52				341	338	336	334	331	329	326	323	320	52
56					310	307	305	302	300	297	295	292	56
60					285	282	280	278	275	272	270	267	60
64						261	259	256	254	251	249	245	64
68							240	237	235	232	230	226	68
72								220	218	215	213	210	72
76									203	200	198	194	76
80									189	186	184	181	80
84										174	172	169	84
88											160	157	88
92												147	92
96												138	96

Load chart of HDB Configuration

Note:

1. Meet the ISO4305 standard;
2. The superlift counterweight cannot leave the ground in the configurations marked with *;
3. The actual lifting capacity must subtract the weight of hooks, wire rope and other riggings from the rated capacity in the load chart.

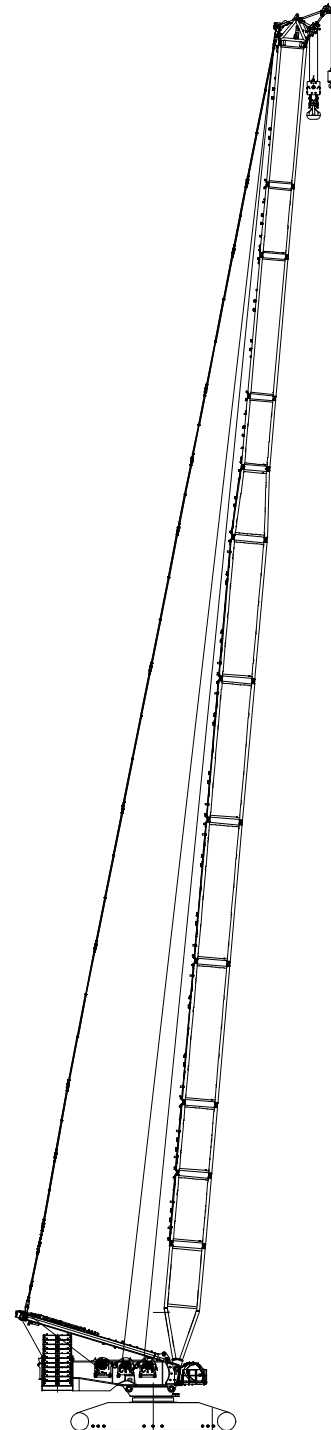
Load chart -HDB (1600t configuration)* (Superlift radius 30m, Superlift counterweight 550t, Rear counterweight 250t, Carbody counterweight 90t)													
Boom 42m~108m													
BL/R (m)	42	48	54	60	66	72	78	84	90	96	102	108	BL/R (m)
8	1600*												8
9	1600*	1600*	1600*										9
10	1600*	1600*	1601*	1456*	1304*								10
11	1600*	1600*	1594*	1456*	1304*	1037*	899*						11
12	1600*	1600*	1594*	1456*	1304*	1037*	899*	818*	777*				12
13	1501 *	1498*	1496*	1402*	1304*	1037*	899*	818*	777*	700*	610*		13
14	1397*	1393*	1392*	1389*	1304*	1037*	899*	818*	777*	700*	610*	542*	14
15	1306*	1302*	1300*	1298*	1294*	1037*	899*	818*	777*	700*	611*	542*	15
16	1225*	1222*	1220*	1218*	1214*	1037*	899*	818*	777*	700*	612*	542*	16
17	1154*	1151*	1149*	1146*	1143*	980*	899*	818*	777*	700*	614*	544*	17
18	1091*	1087*	1085*	1083*	1079*	980*	899*	818*	777*	700*	616*	546*	18
19	1033*	1030	1028	1025	1022	980*	899*	818*	777*	702*	615*	546*	19
20	982*	978	976	974	970	968	899*	818*	777*	704*	615*	546*	20
22	892	889	887	884	881	878	876	818*	777*	704*	618*	548*	22
24	817	814	812	809	806	803	801	798	777	706*	617*	550*	24
26	753	750	748	745	742	739	737	734	731	709	619*	548*	26
28	697	694	692	689	686	684	682	679	676	673	620*	549*	28
30	646	643	641	638	635	633	631	628	626	623	615	550*	30
32	601	598	596	594	591	588	586	583	581	578	576	551	32
34	562	559	557	555	552	549	547	544	542	539	537	527	34
36	528	525	523	520	517	515	513	510	508	505	502	499	36
38	489	494	492	489	486	484	482	479	477	474	471	468	38
40		466	464	462	459	456	454	451	449	446	444	441	40
44		419	417	414	411	408	407	404	401	398	396	393	44
48			377	374	372	369	367	364	362	359	357	354	48
52				341	338	336	334	331	329	326	323	320	52
56					310	307	305	302	300	297	295	292	56
60					285	282	280	278	275	272	270	267	60
64						261	259	256	254	251	249	245	64
68							240	237	235	232	230	226	68
72								220	218	215	213	210	72
76									203	200	198	194	76
80									189	186	184	181	80
84										174	172	169	84
88											160	157	88
92												147	92
96												138	96

1600t configuration: 42-72m boom, and the 1600t customized boom section, boom head, and pulley block are required.

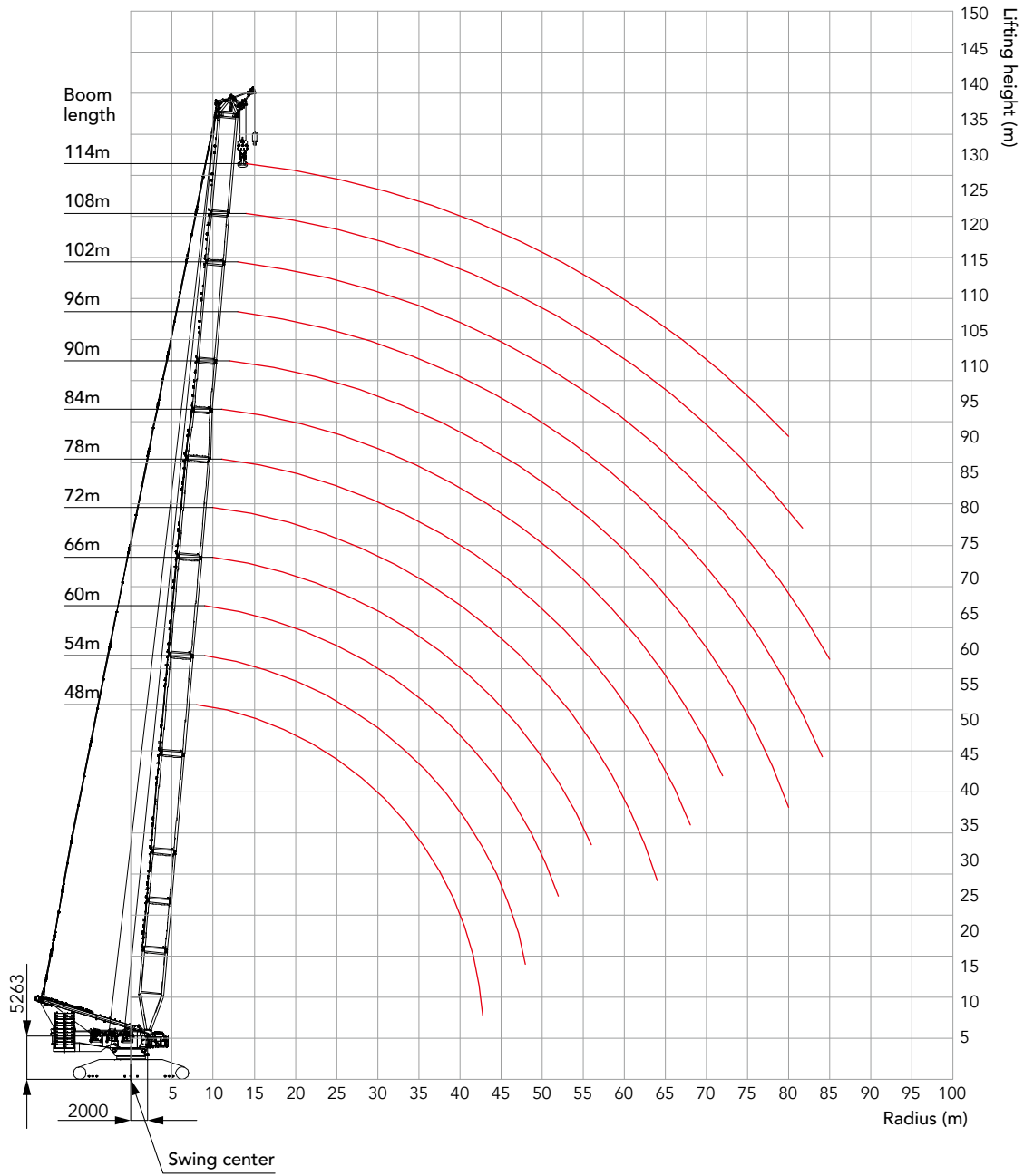
Combination of HJ configuration

Combination of HJ configuration					
Boom length (m)	Boom insert			Jib insert	
	6m	12mA	12mB	6m	12mA
48	-	1	-	1	1
54	1	1	-	1	1
60	2	1	-	1	1
66	1	2	-	1	1
72	2	2	-	1	1
78	1	3	-	1	1
84	2	3	-	1	1
90	1	3	1	1	1
96	2	3	1	1	1
102	1	3	1	1	2
108	2	3	1	1	2
114	2	3	1	2	2

Note: 10.5 boom base, 6m tapered insert and 1.5m jib top are must.



Working range of HJ



Unit: t

Load chart of HJ Configuration

Note:

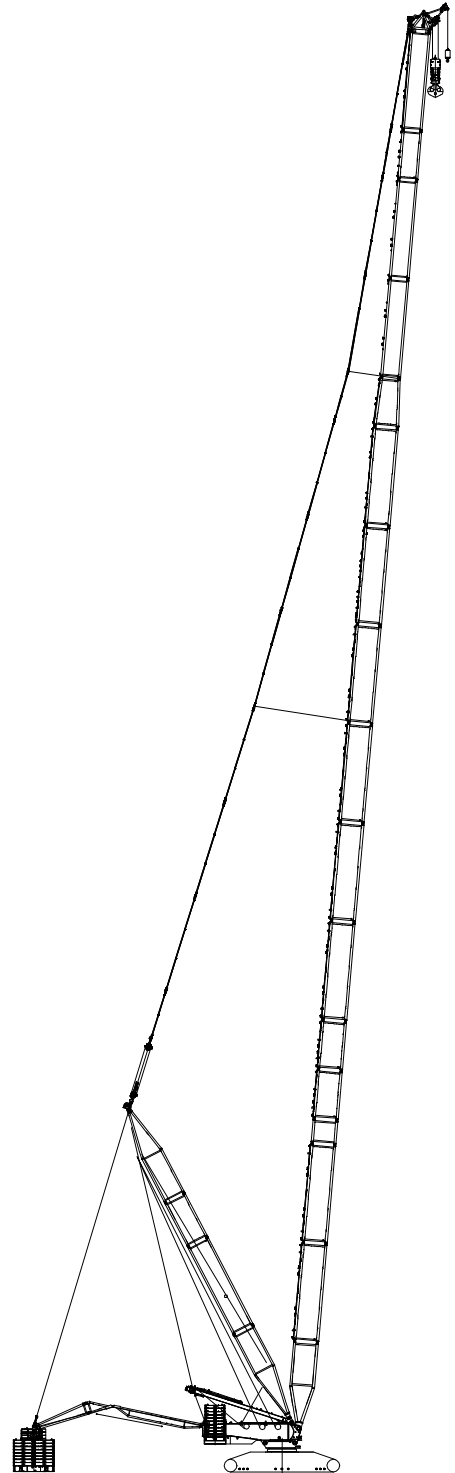
1. Meet the ISO4305 standard;
2. The superlift counterweight cannot leave the ground in the configurations marked with *;
3. The actual lifting capacity must subtract the weight of hooks, wire rope and other riggings from the rated capacity in the load chart.

Load chart -HJ (Rear counterweight 250t, Carbody counterweight 90t)													
Boom 48m~114m													
BL/R (m)	48	54	60	66	72	78	84	90	96	102	108	114	BL/R (m)
8	718												8
9	624	621	619										9
10	550	548	545	543	541								10
11	492	489	487	484	482	479	477						11
12	444	442	439	437	434	431	429	426					12
13	404	402	399	397	394	392	389	387	379	368			13
14	371	368	366	363	361	358	355	353	350	343	330	320	14
15	342	340	337	335	332	329	326	324	321	320	309	299	15
16	317	315	312	310	307	304	301	299	296	297	289	280	16
17	296	293	290	288	285	282	279	277	274	276	272	264	17
18	277	274	271	269	266	263	260	258	255	256	253	248	18
19	260	257	254	252	249	246	243	241	238	239	236	235	19
20	245	242	239	237	234	231	228	226	223	224	221	220	20
22	219	216	213	211	208	205	202	199	196	198	195	193	22
24	197	194	192	189	186	183	180	178	175	176	173	172	24
26	179	176	174	171	168	165	162	160	157	158	155	153	26
28	164	161	158	156	153	150	147	144	141	143	140	138	28
30	151	148	145	142	139	137	134	131	128	129	126	125	30
32	139	137	134	131	128	125	122	120	116	118	115	113	32
34	129	127	124	121	118	115	112	110	106	108	104	103	34
36	120	118	115	112	109	106	103	101	97.9	99.2	96	94.4	36
38	112	110	107	104	101	98.8	95.6	93.1	90	91.2	88.1	86.5	38
40	105	103	100	97.6	94.6	91.7	88.5	86	82.8	84.1	81	79.4	40
44	93	90.7	88	85.3	82.3	79.3	76.2	73.7	70.5	71.8	68.6	67	44
48		80.2	77.6	75	72	69.1	66	63.5	60.3	61.6	58.4	56.8	48
52			68.8	66.2	63.3	60.4	57.3	54.8	51.6	52.9	49.8	48.2	52
56				58.7	55.8	53	49.9	47.4	44.2	45.5	42.3	40.7	56
60					49.3	46.5	43.4	40.9	37.8	39.1	35.9	34.3	60
64					43.6	40.8	37.7	35.3	32.1	33.4	30.3	28.7	64
68						35.7	32.7	30.3	27.1	28.5	25.3	23.7	68
72							28.2	25.8	22.7	24	20.9	19.3	72
76								21.8	18.7	20.1	16.9	15.4	76
80								18.2	15.1	16.5	13.4	11.8	80
84									11.8	13.2	10.1	8.6	84
88										10.2	7.2	5.6	88
92											4.4	2.9	92
96											1.9	0.4	96

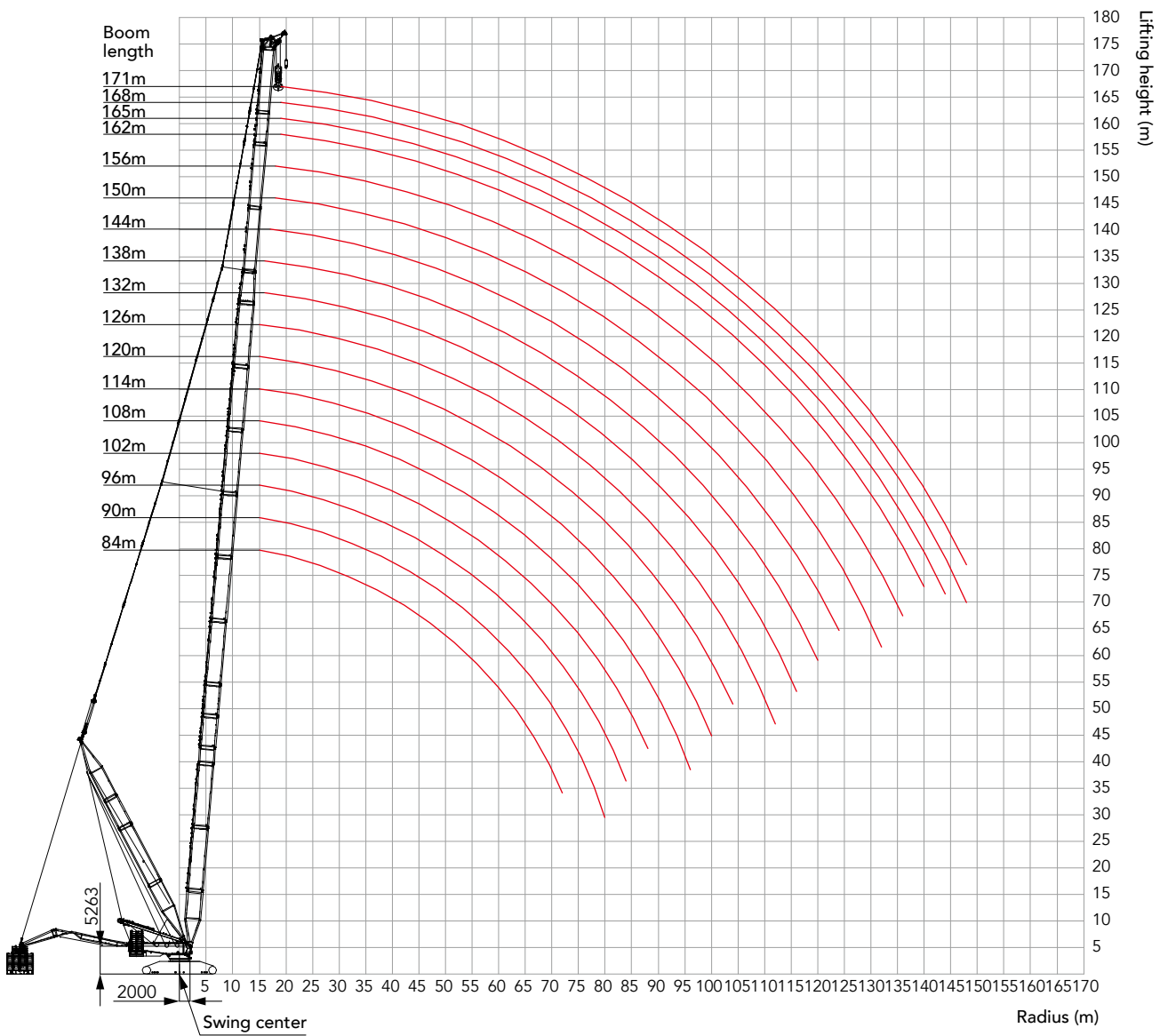
Combination of HJDB configuration

Combination of HJDB configuration								
Boom length (m)	Boom insert					Jib insert		
	3m	6m	12mA	12mB	12mD	6m	12mA	12mB
84	-	1	3	1	-	-	-	-
90	-	2	3	1	-	-	-	-
96	-	1	3	2	-	-	-	-
102	-	2	3	2	-	-	-	-
108	-	1	3	3	-	-	-	-
114	-	2	3	3	-	-	-	-
120	-	1	3	3	1	-	-	-
126	-	2	3	3	1	-	-	-
132	-	2	3	3	1	1	-	-
138	-	2	3	3	1	-	1	-
144	-	2	3	3	1	1	1	-
150	-	2	3	3	1	2	1	-
156	-	2	3	3	1	1	2	-
162	-	2	3	3	1	2	2	-
165	1	2	3	3	1	2	2	-
168	-	2	3	3	1	1	2	-
171	1	2	3	3	1	1	2	1

Note: 10.5 boom base, 6m tapered insert and 1.5m jib top are must.
For boom length of 138m~156m, the mid-point suspension cable must be used, otherwise, the boom system may break.



Working range of HJDB



Load chart of HJDB Configuration

Note:

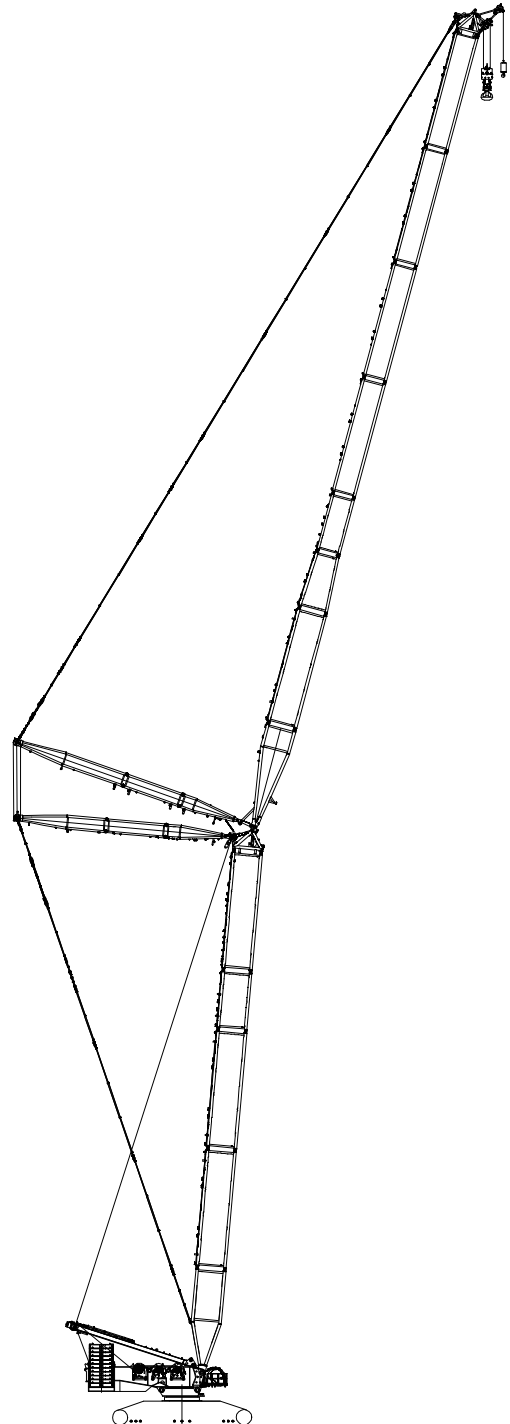
1. Meet the ISO4305 standard;
2. The superlift counterweight cannot leave the ground in the configurations marked with *;
3. The actual lifting capacity must subtract the weight of hooks, wire rope and other riggings from the rated capacity in the load chart.

Load chart -HJDB (Superlift radius 30m, Superlift counterweight 550t, Rear counterweight 250t, Carbody counterweight 90t)																		
Boom 84m~171m																		
BL/R(m)	84	90	96	102	108	114	120	126	132	138	144	150	156	162	165	168	171	BL/R(m)
12	650*	650*																12
13	650*	650*	650*	621*														13
14	650*	650*	650*	622*	547*	489*												14
15	650*	650*	650*	623*	548*	489*	434*	390*										15
16	650*	650*	650*	623*	548*	489*	434*	390*	351*	315*								16
17	650*	650*	650*	623*	550*	491*	435*	392*	351*	315*	284*							17
18	650*	650*	650*	624*	551*	492*	436*	393*	351*	315*	285*	254*	229*					18
19	650*	650*	650*	625*	551*	492*	435*	393*	352*	316*	284*	255*	229*	203*	195*	181*	173*	19
20	650*	650*	650*	627*	551*	492*	435*	393*	353*	316*	284*	255*	229*	203*	194*	180*	172*	20
22	650*	650*	650*	626*	553*	493*	436*	392*	352*	318*	285*	256*	230*	202*	193*	179*	171*	22
24	650*	650*	650*	628*	555*	495*	437*	392*	354*	317*	286*	256*	230*	201*	192*	178*	170*	24
26	650*	650*	650*	630*	553*	493*	436*	394*	353*	318*	287*	257*	229*	200*	191*	177*	169*	26
28	650	650	650	632*	555*	494*	437*	395*	354*	319*	283*	253*	226*	199*	190*	176*	168*	28
30	630	627	625	616	555*	495*	438*	395*	351*	316*	283*	253*	226*	198*	189*	174*	167*	30
32	586	583	580	577	556	495*	438*	393*	352*	317*	282*	253*	225*	197*	188*	173*	166*	32
34	547	544	541	538	529	495*	438*	394*	351*	316*	282*	253*	224*	195*	187*	172*	165*	34
36	512	509	507	504	501	486	438*	395*	352*	316*	283*	253*	223*	194*	186*	170*	164*	36
38	481	478	476	473	471	467	438	393*	352*	316*	283*	251*	221*	193*	184*	169*	162*	38
40	453	451	448	445	443	440	428	394*	353*	317*	282*	250*	220*	191*	183*	168*	161*	40
44	406	403	401	398	395	392	392	389	351*	315*	282*	247*	217*	188*	180*	165*	159*	44
48	366	363	361	358	356	353	353	349	348	315*	279*	244*	214*	185*	178*	162*	156*	48
52	333	330	328	325	322	319	319	316	315	313	275*	241*	211*	183*	175*	159*	153*	52
56	305	302	299	296	294	291	291	288	286	287	272	238*	208*	179*	172*	156*	151*	56
60	280	277	275	272	269	266	266	263	262	262	261	235*	205*	176*	170*	153*	148*	60
64	258	255	253	250	248	245	245	241	240	240	239	231	201*	173*	167*	150*	145*	64
68	239	236	234	231	229	226	226	222	221	221	220	219	198	170*	164*	148*	143*	68
72	222	219	217	214	212	209	209	206	204	205	203	202	195	167*	162*	145*	140*	72
76		204	202	199	197	194	194	191	189	190	188	187	187	164*	159*	142*	137*	76
80		191	188	185	183	180	180	177	176	176	175	173	173	161	156	139*	135*	80
84			176	173	171	168	168	165	164	164	162	161	161	158	153	137*	132*	84
88				162	160	157	157	154	152	153	151	150	150	148	146	134	130	88
92					149	146	147	143	142	143	141	140	140	138	136	131	127	92
96					140	137	137	134	133	133	132	130	130	129	127	129	125	96
100						128	129	125	124	125	123	122	122	120	118	121	119	100
104							121	117	116	117	115	114	114	112	111	113	111	104
108								110	109	109	108	107	107	105	103	105	104	108
112								103	102	102	101	100	100	98.6	96.9	99	97.2	112
116									96.2	96.5	95.3	93.9	93.8	92.3	90.6	92.6	90.9	116
120										90.5	89.3	88	87.9	86.3	84.6	86.7	85	120
124											83.7	82.4	82.3	80.8	79.1	81.2	79.5	124
128												77.1	77.1	75.6	73.9	75.9	74.3	128
132													72.2	72.1	70.6	69	69.4	132
136														67.5	66	64.3	64.7	136
140															61.6	59.9	62	140
144																55.8	56.2	144
148																	54	148

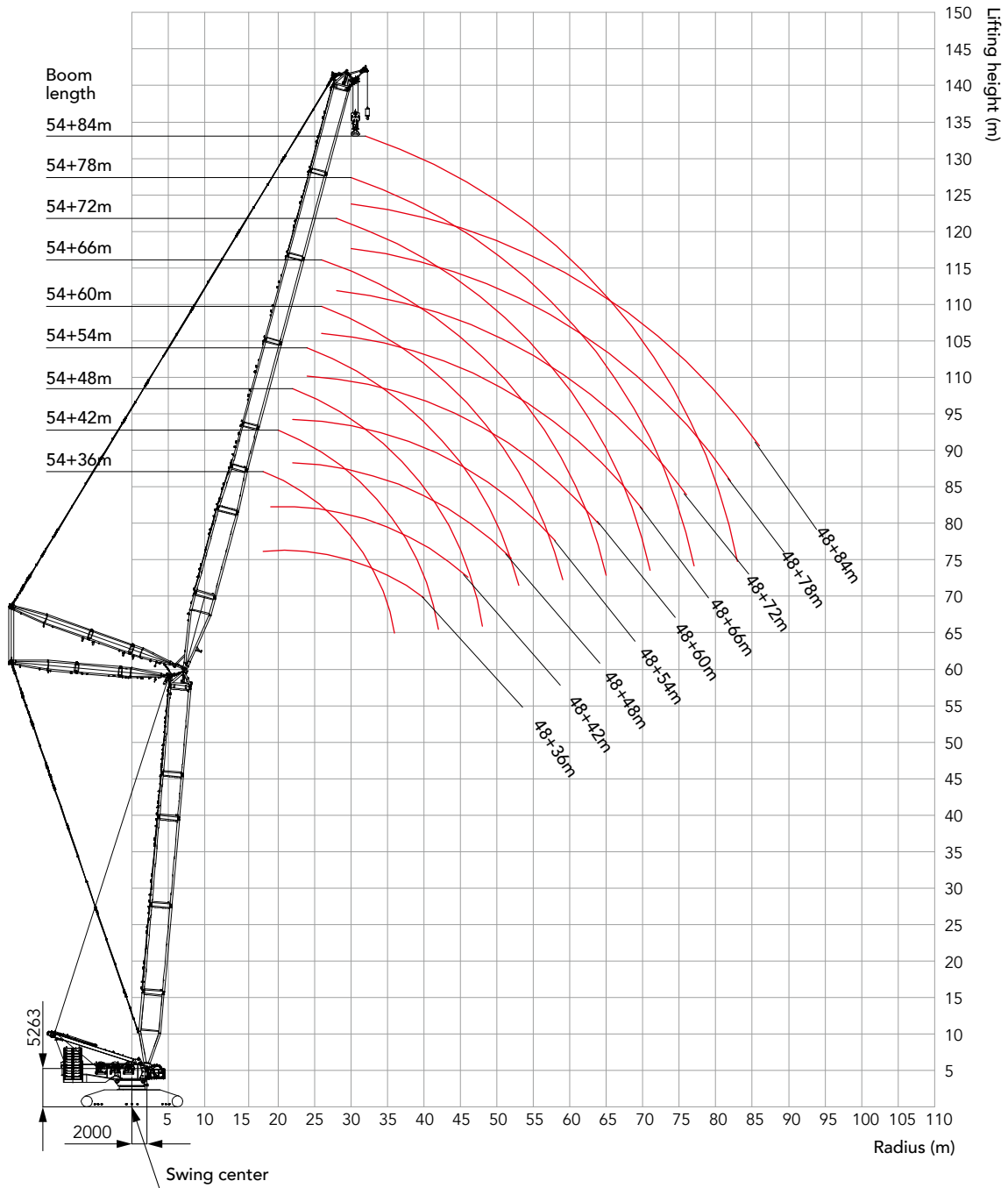
Combination of LJ configuration

Combination of LJ configuration						
Boom length(m)	Boom insert			Jib insert		
	6m	12mA	12mD	6m	12mA	12mB
36	-	-	1	1	-	-
42	1	1	1	-	1	-
48	2	1	1	1	1	-
54	1	2	1	-	2	-
60	-	-	1	1	2	-
66	-	-	1	-	2	1
72	-	-	1	1	2	1
78	-	-	1	-	2	2
84	-	-	1	1	2	2

Note: boom base, 12m transition insert and boom top are must;
the luffing jib base, 6m jib tapered insert and jib top are must.



Working range of LJ



Unit: t

Load chart of LJ Configuration

Note:

1. Meet the ISO4305 standard;
2. The superlift counterweight cannot leave the ground in the configurations marked with *;
3. The actual lifting capacity must subtract the weight of hooks, wire rope and other riggings from the rated capacity in the load chart.

Load chart -LJ (Rear counterweight 250t, Carbody counterweight 90t) 1/3

Boom 42m											
BL/R (m)	30	36	42	48	54	60	66	72	78	84	BL/R (m)
16	324										16
17	302										17
18	283	281									18
19	266	264	263								19
20	250	248	248								20
22	224	222	221	219							22
24	202	201	200	198	197	195					24
26	184	182	182	180	179	177	176				26
28	168	167	166	164	163	161	161	159			28
30	154	153	153	151	150	148	147	145	145	143	30
32	142	142	141	139	139	137	136	134	133	131	32
34	131	131	131	129	128	126	126	124	123	121	34
36		122	122	120	119	117	117	115	114	112	36
38		113	114	112	111	109	109	107	106	104	38
40		106	106	105	104	102	101	99.9	99.2	97.2	40
44			93.5	92.5	91.9	90.1	89.4	87.5	86.8	84.8	44
48				81.8	81.4	79.7	79.1	77.2	76.5	74.5	48
52				72.5	72.5	71	70.4	68.5	67.8	65.9	52
56					64.7	63.4	62.9	61.1	60.4	58.5	56
60						56.7	56.4	54.6	54	52.1	60
64						50.5	50.5	48.9	48.3	46.4	64
68							45.2	43.8	43.3	41.4	68
72								39.1	38.7	37	72
76								34.7	34.6	32.9	76
80									30.8	29.2	80
84										25.8	84

Load chart of LJ Configuration

Load chart -LJ (Rear counterweight 250t, Carbody counterweight 90t) 2/3

Boom 48m											
BL/R (m)	30	36	42	48	54	60	66	72	78	84	BL/R (m)
17	299										17
18	280	278									18
19	263	261									19
20	248	246	245								20
22	222	220	219	217							22
24	200	198	198	196	195						24
26	182	180	180	178	177	175	174				26
28	166	165	164	162	161	159	159	157			28
30	153	152	151	149	148	146	145	143	143		30
32	141	140	140	138	137	135	134	132	131	129	32
34	130	130	129	128	127	125	124	122	121	119	34
36	120	121	120	119	118	116	115	113	112	110	36
38		112	112	111	110	108	107	105	104	102	38
40		105	105	103	103	101	100	98.5	97.7	95.7	40
44			92.5	91.3	90.7	88.9	88.2	86.2	85.5	83.4	44
48				80.8	80.3	78.6	77.9	76	75.3	73.3	48
52				71.6	71.5	69.9	69.3	67.4	66.7	64.7	52
56					63.8	62.4	61.9	60	59.3	57.4	56
60						55.8	55.4	53.6	53	51	60
64						49.7	49.7	48	47.4	45.5	64
68							44.4	42.9	42.4	40.5	68
72								38.3	37.9	36.1	72
76								34.1	33.9	32.1	76
80									30.1	28.5	80
84										25.1	84
88										21.9	88

Unit: t

Load chart of LJ Configuration

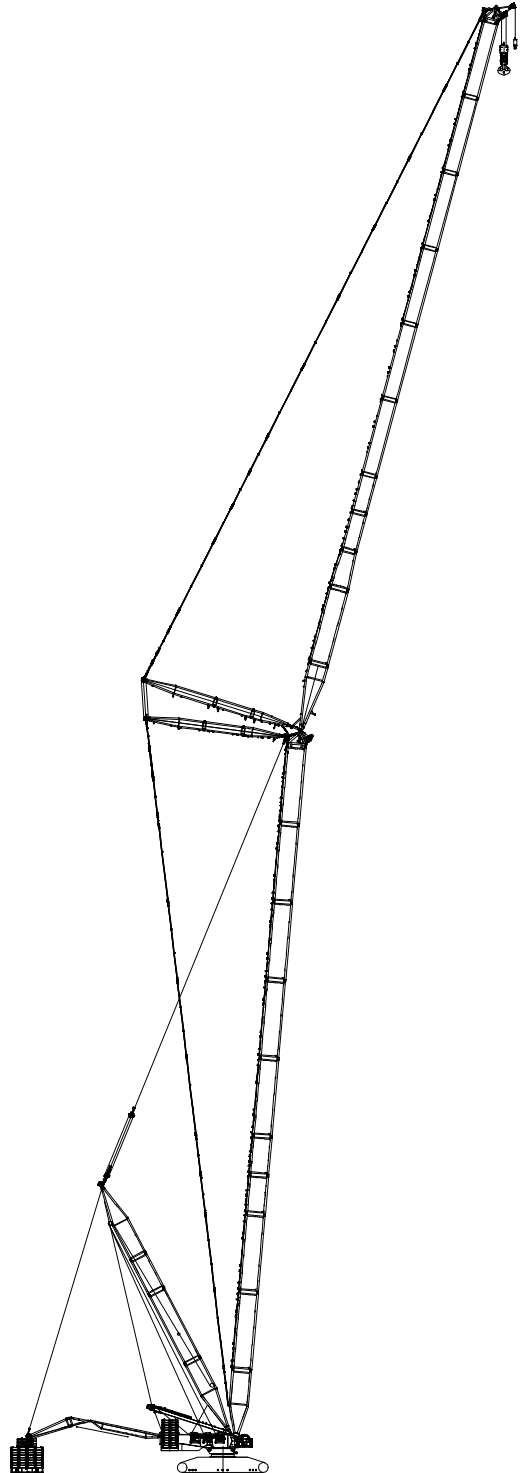
Load chart -LJ (Rear counterweight 250t, Carbody counterweight 90t) 3/3

Boom 54m											
BL/R (m)	30	36	42	48	54	60	66	72	78	84	BL/R (m)
17	296										17
18	277										18
19	260	258									19
20	245	243									20
22	219	217	216	214							22
24	198	196	195	193	192						24
26	180	178	178	176	174	172					26
28	165	163	162	160	159	157	156	154			28
30	151	150	149	147	146	144	144	141	141		30
32	139	138	138	136	135	133	132	130	129	127	32
34	129	128	128	126	125	123	122	120	119	117	34
36	119	119	119	117	116	114	113	111	111	108	36
38		111	111	109	108	106	106	104	103	101	38
40		104	104	102	101	99.8	99	97	96.2	94.1	40
44			91.4	90.1	89.4	87.6	86.9	84.9	84.1	82	44
48			80.3	79.7	79.2	77.4	76.7	74.8	74	72	48
52				70.6	70.4	68.7	68.2	66.2	65.5	63.5	52
56					62.8	61.3	60.8	58.9	58.2	56.2	56
60						54.8	54.4	52.6	51.9	50	60
64						48.9	48.8	47	46.4	44.5	64
68							43.6	42.1	41.5	39.6	68
72								37.5	37.1	35.3	72
76								33.3	33.1	31.3	76
80									29.4	27.7	80
84										24.4	84
88										21.2	88

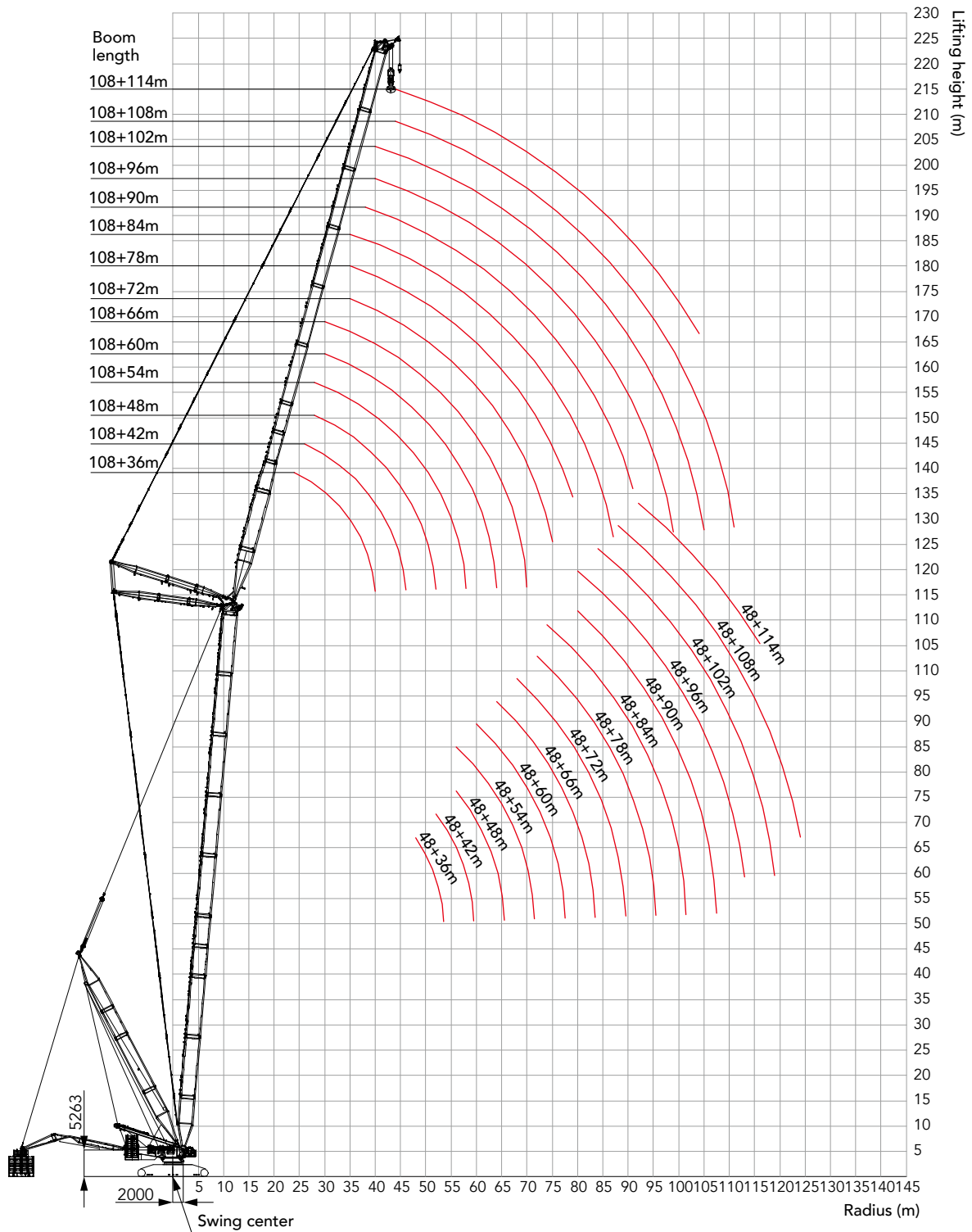
Combination of LJDB configuration

Combination of LJDB configuration							
Boom length (m)	Boom insert				Jib insert		
	6m	12mA	12mB	12mD	6m	12mA	12mB
36	-	-	-	1	1	-	-
42	1	1	-	1	-	1	-
48	2	1	-	1	1	1	-
54	1	2	-	1	-	2	-
60	2	2	-	1	1	2	-
66	1	3	-	1	-	2	1
72	2	3	-	1	1	2	1
78	1	3	1	1	-	2	2
84	2	3	1	1	1	2	2
90	1	3	2	1	2	2	2
96	2	3	2	1	1	2	3
102	1	3	3	1	2	2	3
108	2	3	3	1	1	2	4
114	2	3	3	1	2	2	4

Note: boom base, 12m transition insert and boom top are must;
the luffing jib base, 6m jib tapered insert and jib top are must.



Working range of LJDB



Load chart of LJDB Configuration

Note:

1. Meet the ISO4305 standard;
2. The superlift counterweight cannot leave the ground in the configurations marked with *;
3. The actual lifting capacity must subtract the weight of hooks, wire rope and other riggings from the rated capacity in the load chart.

Load chart -LJDB (Superlift radius 30m, Superlift counterweight 550t, Rear counterweight 250t, Carbody counterweight 90t) 1/11																
Boom 48m																
BL/R (m)	30	36	42	48	54	60	66	72	78	84	90	96	102	108	114	BL/R (m)
17	650*															17
18	650*	650*														18
19	650*	650*														19
20	650*	650*	650*													20
22	650*	650*	650*	568*												22
24	650*	650*	650*	566*	480*											24
26	599*	650*	638*	562*	478*	404*	345*									26
28	545*	604*	590*	551*	476*	403*	344*	292*								28
30	500*	552*	562*	524*	472*	401*	343*	291*	248*							30
32	467*	504*	510*	491*	460*	398*	341*	290*	246*	211*	181*					32
34	418*	457*	465*	470*	440*	395*	339*	288*	245*	210*	180*	157*				34
36	357*	416*	426*	437*	417*	387*	337*	287*	244*	209*	179*	156*	134*			36
38		376*	390*	403*	396*	370*	334*	285*	242*	207*	177*	155*	133*	114*		38
40		337*	359*	372*	375*	353*	331*	283*	240*	205*	176*	154*	131*	112*	96.2*	40
44			300*	320*	330*	321*	305*	278*	236*	202*	173*	152*	129*	110*	94.0*	44
48				274*	288*	289*	278*	262*	232*	199*	170*	149*	127*	108*	91.7*	48
52				229*	251*	259*	253*	242*	227*	195*	166*	147*	124*	106*	89.6*	52
56					216*	229*	228*	221*	212*	191*	163*	144*	121*	104*	87.3*	56
60						201*	205*	202*	195*	182*	160*	141*	119*	101*	85.0*	60
64						172*	181*	184*	179*	166*	149*	138*	116*	99.4*	82.8*	64
68							158*	167*	164*	152*	135*	136*	114*	97.2*	80.5*	68
72								148*	151*	140*	124*	133*	111*	94.9*	78.2*	72
76								127*	138*	129*	114*	128*	109*	93.0*	76.3*	76
80									123*	118*	104*	120*	106*	90.9*	74.1*	80
84										110*	96.1*	111*	104*	88.9*	72.0*	84
88										100*	88.0*	104*	100*	86.9*	70.0*	88
92											81.3*	97.0*	93.8*	85.0*	68.2*	92
96												89.8*	87.9*	83.1*	65.3*	96
100													82.1*	80.2*	59.3*	100
104													75.0*	75.1*	53.6*	104
108														70.1*	48.4*	108
112															43.3*	112
116															38.5*	116

Unit: t

Load chart of LJDB Configuration

Load chart -LJDB (Superlift radius 30m, Superlift counterweight 550t, Rear counterweight 250t, Carbody counterweight 90t) 2/11																
Boom 54m																
BL/R (m)	30	36	42	48	54	60	66	72	78	84	90	96	102	108	114	BL/R (m)
17	650*															17
18	650*															18
19	650*	650*														19
20	650*	650*														20
22	650*	650*	613*	522*												22
24	650*	650*	607*	520*	445*											24
26	621*	630*	583*	517*	443*	378*										26
28	563*	586*	551*	509*	441*	376*	323*	277*								28
30	515*	545*	519*	484*	438*	375*	322*	276*	236*							30
32	478*	505*	486*	458*	427*	372*	321*	275*	235*	202*						32
34	437*	465*	453*	431*	406*	370*	319*	274*	234*	201*	172*					34
36	379*	428*	423*	405*	384*	360*	317*	273*	232*	200*	171*	150*	129*			36
38		390*	394*	381*	365*	345*	315*	271*	231*	198*	170*	149*	128*	109*		38
40		351*	366*	358*	346*	327*	307*	269*	230*	197*	169*	148*	127*	108*	92.8*	40
44			310*	314*	307*	296*	283*	263*	226*	194*	166*	146*	125*	107*	91.1*	44
48			250*	275*	272*	266*	258*	244*	222*	191*	164*	144*	122*	105*	89.1*	48
52				238*	240*	239*	233*	223*	212*	188*	161*	142*	120*	103*	87.0*	52
56					212*	213*	209*	204*	196*	184*	158*	139*	118*	101*	84.9*	56
60						189*	190*	186*	180*	171*	155*	137*	116*	98.9*	82.8*	60
64						168*	170*	168*	165*	159*	149*	134*	113*	96.8*	80.7*	64
68							153*	152*	151*	147*	137*	132*	111*	94.7*	78.6*	68
72								138*	138*	135*	125*	127*	108*	92.9*	76.7*	72
76								125*	126*	124*	115*	118*	106*	90.9*	74.7*	76
80									114*	114*	106*	110*	104*	88.9*	72.6*	80
84										104*	97.5*	102*	98.6*	87.0*	70.7*	84
88										96.3*	89.1*	94.3*	91.8*	85.1*	68.7*	88
92											81.9*	87.7*	85.5*	83.2*	67.0*	92
96												81.0*	79.4*	78.4*	65.2*	96
100													74.6*	73.9*	72.6*	100
104														68.5*	67.7*	104
108															63.0*	108
112															58.3*	112
116															40.4*	116

Load chart of LJDB Configuration

Load chart -LJDB (Superlift radius 30m, Superlift counterweight 550t, Rear counterweight 250t, Carbody counterweight 90t) 3/11																
Boom 60m																
BL/R (m)	30	36	42	48	54	60	66	72	78	84	90	96	102	108	114	BL/R (m)
18	650*															18
19	650*															19
20	650*	646*														20
22	650*	638*	556*													22
24	650*	617*	551*	476*	411*											24
26	614*	577*	538*	473*	410*	351*										26
28	565*	539*	508*	468*	407*	350*	304*									28
30	520*	499*	475*	445*	404*	349*	302*	260*	223*							30
32	478*	463*	445*	423*	394*	347*	301*	260*	223*	192*						32
34	439*	431*	416*	399*	376*	344*	299*	259*	222*	191*	165*					34
36	398*	397*	389*	374*	356*	334*	298*	257*	221*	190*	164*	144*				36
38		367*	363*	353*	336*	319*	296*	256*	220*	189*	163*	143*	122*	105*		38
40		340*	338*	329*	319*	304*	286*	254*	218*	188*	162*	142*	122*	104*	89.5*	40
44			293*	289*	283*	273*	261*	246*	215*	186*	160*	140*	120*	103*	87.8*	44
48			253*	253*	251*	246*	238*	227*	212*	183*	158*	138*	118*	101*	86.1*	48
52				221*	223*	219*	215*	207*	198*	180*	155*	136*	116*	99.6*	84.2*	52
56					195*	195*	194*	188*	182*	173*	152*	134*	114*	97.8*	82.3*	56
60					172*	174*	175*	171*	167*	159*	149*	132*	112*	95.9*	80.4*	60
64						155*	155*	155*	152*	147*	141*	130*	110*	93.9*	78.5*	64
68							140*	140*	139*	135*	130*	125*	108*	92.2*	76.7*	68
72							126*	127*	127*	124*	120*	117*	105*	90.3*	74.8*	72
76								114*	115*	114*	111*	109*	103*	88.4*	72.8*	76
80									104*	104*	102*	101*	97.5*	86.6*	70.9*	80
84										95.4*	94.6*	93.3*	90.2*	84.7*	69.1*	84
88										86.8*	86.5*	86.3*	84.0*	81.6*	67.4*	88
92											79.7*	79.4*	78.0*	76.4*	65.6*	92
96												73.3*	72.3*	71.1*	63.9*	96
100													67.5*	66.6*	65.8*	100
104														61.6*	61.1*	104
108															56.6*	108
112															52.3*	112
116															39.7*	116

Unit: t

Load chart of LJDB Configuration

Load chart -LJDB (Superlift radius 30m, Superlift counterweight 550t, Rear counterweight 250t, Carbody counterweight 90t) 4/11																
Boom 66m																
BL/R (m)	30	36	42	48	54	60	66	72	78	84	90	96	102	108	114	BL/R (m)
18	650*															18
19	650*															19
20	650*	583*														20
22	650*	575*	505*													22
24	609*	565*	500*	436*												24
26	564*	532*	493*	433*	377*	327*										26
28	523*	498*	469*	428*	375*	326*	284*									28
30	483*	464*	441*	413*	372*	325*	283*	245*								30
32	445*	429*	414*	391*	367*	323*	282*	244*	210*	182*						32
34	408*	400*	386*	368*	348*	320*	281*	243*	210*	181*	157*					34
36	376*	369*	362*	348*	332*	312*	279*	242*	209*	181*	156*	137*				36
38		342*	336*	326*	313*	296*	277*	241*	208*	180*	155*	136*	117*			38
40		317*	313*	306*	296*	283*	267*	239*	207*	179*	155*	136*	116*	100*	85.7*	40
44			272*	270*	264*	255*	244*	230*	204*	177*	153*	134*	115*	98.9*	84.3*	44
48			235*	235*	234*	228*	222*	212*	200*	174*	151*	132*	113*	97.4*	82.7*	48
52				206*	207*	204*	200*	192*	184*	172*	148*	131*	112*	95.8*	81.1*	52
56					183*	182*	179*	175*	169*	161*	146*	129*	110*	94.1*	79.4*	56
60					161*	161*	161*	159*	155*	149*	141*	127*	108*	92.6*	77.6*	60
64						144*	145*	143*	141*	137*	132*	125*	106*	90.9*	76.1*	64
68							129*	129*	129*	125*	122*	117*	104*	89.1*	74.3*	68
72							116*	117*	117*	115*	112*	109*	102*	87.3*	72.5*	72
76								106*	106*	105*	103*	101*	97.2*	85.6*	70.6*	76
80									96.7*	96.5*	94.5*	93.3*	90.1*	83.8*	68.8*	80
84									87.4*	88.0*	86.7*	85.9*	84.0*	81.7*	67.1*	84
88										80.1*	79.7*	79.2*	77.6*	75.5*	65.5*	88
92											72.7*	72.7*	71.4*	70.3*	63.8*	92
96												66.8*	65.8*	65.0*	62.2*	96
100													61.6*	61.0*	58.9*	100
104														56.3*	55.9*	104
108															51.6*	108
112															47.5*	112
116															41.0*	116

Load chart of LJDB Configuration

Load chart -LJDB (Superlift radius 30m, Superlift counterweight 550t, Rear counterweight 250t, Carbody counterweight 90t) 5/11																
Boom 72m																
BL/R (m)	30	36	42	48	54	60	66	72	78	84	90	96	102	108	114	BL/R (m)
19	595*															19
20	595*															20
22	582*	517*	457*													22
24	560*	507*	452*	398*												24
26	519*	488*	446*	395*	348*											26
28	482*	457*	433*	390*	345*	302*	264*									28
30	446*	427*	408*	383*	342*	300*	263*	229*								30
32	412*	397*	382*	362*	338*	298*	262*	228*	198*							32
34	382*	371*	357*	341*	323*	295*	261*	227*	197*	172*						34
36	351*	343*	335*	322*	307*	289*	259*	226*	197*	171*	148*	130*				36
38	326*	319*	313*	304*	292*	276*	257*	225*	196*	170*	147*	130*	111*			38
40		296*	292*	285*	274*	263*	249*	223*	195*	170*	147*	129*	111*	95.8*		40
44		254*	254*	250*	244*	236*	227*	215*	192*	168*	145*	128*	110*	94.7*	80.5*	44
48			221*	219*	216*	212*	206*	197*	186*	165*	143*	126*	108*	93.4*	79.2*	48
52				191*	192*	189*	185*	179*	173*	162*	141*	125*	107*	92.1*	77.8*	52
56					170*	168*	166*	163*	157*	150*	139*	123*	105*	90.6*	76.5*	56
60					150*	151*	150*	147*	144*	138*	132*	121*	103*	89.0*	74.9*	60
64						133*	134*	133*	131*	127*	122*	117*	101*	87.4*	73.3*	64
68							120*	119*	119*	116*	113*	109*	99.8*	85.7*	71.6*	68
72								108*	108*	107*	106*	104*	101*	96.5*	84.1*	72
76									97.7*	98.6*	97.5*	95.5*	93.8*	90.4*	82.4*	76
80										89.3*	88.8*	87.2*	85.9*	83.4*	80.7*	80
84											80.5*	79.8*	79.4*	77.1*	75.4*	84
88												73.5*	73.3*	73.1*	71.0*	88
92													66.8*	67.1*	65.6*	92
96														60.9*	61.1*	96
100															56.2*	100
104																104
108															51.0*	108
112																112
116																116

Unit: t

Load chart of LJDB Configuration

Load chart -LJDB (Superlift radius 30m, Superlift counterweight 550t, Rear counterweight 250t, Carbody counterweight 90t) 6/11																
Boom 78m																
BL/R (m)	30	36	42	48	54	60	66	72	78	84	90	96	102	108	114	BL/R (m)
20	529*															20
22	517*	462*														22
24	502*	453*	406*	359*												24
26	479*	443*	400*	356*	315*											26
28	446*	423*	392*	351*	313*	275*										28
30	414*	395*	376*	346*	310*	273*	241*	211*								30
32	383*	368*	353*	335*	306*	271*	240*	211*	184*							32
34	354*	342*	332*	315*	299*	269*	239*	210*	184*	160*						34
36	329*	319*	310*	298*	284*	265*	237*	209*	183*	159*	139*					36
38	304*	297*	290*	281*	270*	255*	235*	208*	182*	159*	138*	121*	105*			38
40		277*	271*	264*	255*	243*	231*	206*	181*	158*	138*	121*	104*	90.2*		40
44		239*	236*	232*	227*	219*	211*	199*	178*	156*	136*	120*	103*	89.3*	76.1*	44
48			207*	204*	202*	197*	191*	183*	174*	154*	134*	119*	102*	88.2*	75.0*	48
52				179*	179*	175*	172*	166*	160*	151*	132*	117*	101*	87.0*	73.8*	52
56				158*	158*	156*	155*	152*	147*	139*	130*	115*	99.7*	85.7*	72.5*	56
60					140*	140*	140*	137*	133*	129*	123*	114*	98.0*	84.3*	71.1*	60
64						124*	125*	123*	121*	118*	113*	109*	96.2*	82.8*	69.6*	64
68							112*	112*	110*	108*	104*	101*	94.4*	81.2*	68.1*	68
72							100*	101*	100*	98.8*	95.8*	93.8*	90.1*	79.9*	66.5*	72
76								90.4*	91.4*	89.7*	88.4*	86.7*	83.3*	78.3*	65.2*	76
80									82.4*	81.7*	80.6*	79.4*	76.7*	74.7*	63.6*	80
84									75.0*	74.5*	73.7*	73.3*	71.2*	69.0*	62.0*	84
88										67.6*	67.2*	67.3*	65.2*	64.4*	60.5*	88
92												61.3*	61.5*	60.1*	59.1*	92
96												56.1*	55.9*	55.2*	54.7*	96
100													51.5*	50.5*	50.3*	100
104														46.8*	45.9*	104
108														42.7*	42.1*	108
112															38.7*	112
116																116

Load chart of LJDB Configuration

Load chart -LJDB (Superlift radius 30m, Superlift counterweight 550t, Rear counterweight 250t, Carbody counterweight 90t) 7/11																
Boom 84m																
BL/R (m)	30	36	42	48	54	60	66	72	78	84	90	96	102	108	114	BL/R (m)
20	474*															20
22	464*	416*														22
24	451*	408*	367*													24
26	438*	399*	362*	323*	288*											26
28	413*	388*	355*	319*	286*	253*										28
30	383*	366*	347*	314*	282*	251*	223*									30
32	358*	343*	328*	308*	279*	249*	222*	195*	172*							32
34	331*	319*	309*	294*	275*	246*	221*	195*	171*	150*						34
36	308*	298*	290*	278*	264*	243*	219*	193*	170*	149*	130*					36
38	285*	278*	270*	262*	251*	239*	216*	192*	170*	149*	130*	114*				38
40		260*	253*	246*	237*	227*	214*	190*	168*	148*	129*	114*	98.8*	85.1*		40
44		225*	222*	217*	212*	205*	197*	186*	166*	146*	128*	113*	97.9*	84.3*	71.9*	44
48			194*	191*	189*	184*	179*	171*	163*	144*	126*	112*	96.8*	83.4*	71.0*	48
52				168*	167*	164*	161*	156*	150*	141*	124*	110*	95.5*	82.3*	69.9*	52
56				148*	148*	146*	145*	141*	136*	131*	122*	108*	94.0*	81.3*	68.7*	56
60					131*	131*	130*	127*	125*	120*	115*	107*	92.4*	79.9*	67.6*	60
64						116*	116*	115*	113*	109*	106*	102*	90.7*	78.5*	66.2*	64
68						104*	104*	104*	103*	100*	97.5*	94.8*	88.9*	77.1*	64.8*	68
72							93.8*	93.7*	93.4*	91.9*	89.3*	87.3*	83.8*	75.5*	63.4*	72
76								84.1*	84.6*	84.0*	81.7*	80.0*	77.5*	74.0*	61.9*	76
80									76.9*	76.4*	74.9*	73.9*	71.3*	69.3*	60.4*	80
84									69.5*	69.3*	68.4*	67.5*	65.6*	64.3*	59.0*	84
88										62.9*	62.1*	61.9*	60.2*	59.1*	56.7*	88
92											56.6*	56.4*	55.4*	54.6*	52.8*	92
96											51.9*	51.8*	50.7*	50.2*	48.4*	96
100												47.2*	46.6*	46.2*	44.9*	100
104													42.4*	42.4*	41.0*	104
108													38.7*	38.7*	37.7*	108
112														35.3*	34.6*	112
116															31.7*	116
120															29.0*	120

Unit: t

Load chart of LJDB Configuration

Load chart -LJDB (Superlift radius 30m, Superlift counterweight 550t, Rear counterweight 250t, Carbody counterweight 90t) 8/11																
Boom 90m																
BL/R (m)	30	36	42	48	54	60	66	72	78	84	90	96	102	108	114	BL/R (m)
22	411*	370*														22
24	401*	363*	328*													24
26	389*	355*	323*	290*												26
28	377*	346*	316*	286*	258*	229*										28
30	355*	336*	309*	282*	255*	227*	203*									30
32	332*	318*	302*	276*	251*	225*	202*	178*								32
34	310*	298*	286*	270*	247*	222*	200*	177*	157*							34
36	287*	277*	269*	257*	243*	219*	198*	176*	157*	137*	120*					36
38	268*	259*	253*	243*	233*	216*	196*	175*	156*	137*	119*	106*				38
40		242*	237*	229*	221*	210*	193*	173*	155*	136*	119*	105*	91.4*			40
44		211*	208*	203*	198*	190*	183*	169*	152*	134*	118*	104*	90.6*	78.4*	66.8*	44
48			182*	179*	176*	171*	166*	159*	149*	132*	116*	103*	89.8*	77.6*	66.0*	48
52				158*	156*	153*	149*	144*	139*	129*	114*	102*	88.6*	76.6*	65.1*	52
56				139*	139*	136*	135*	131*	127*	121*	112*	100*	87.1*	75.5*	64.0*	56
60					123*	122*	121*	118*	116*	112*	106*	98.6*	85.6*	74.2*	62.8*	60
64						109*	109*	107*	105*	102*	98.5*	95.0*	83.9*	72.8*	61.6*	64
68						97.6*	98.1*	96.9*	95.9*	93.4*	90.3*	87.8*	82.2*	71.6*	60.4*	68
72							88.1*	87.5*	87.3*	85.7*	82.9*	80.7*	77.3*	70.1*	59.0*	72
76								78.7*	79.1*	77.7*	75.7*	74.5*	71.2*	68.6*	57.6*	76
80									71.2*	71.6*	70.6*	69.3*	68.3*	66.1*	64.1*	80
84										65.0*	64.5*	63.4*	62.8*	60.6*	59.4*	84
88											58.1*	57.6*	57.4*	55.8*	54.5*	88
92												53.1*	52.5*	51.3*	50.4*	92
96													47.7*	47.4*	46.9*	96
100														43.7*	42.7*	100
104															39.1*	104
108															35.7*	108
112															32.1*	112
116																116
120																120

Load chart of LJDB Configuration

Load chart -LJDB (Superlift radius 30m, Superlift counterweight 550t, Rear counterweight 250t, Carbody counterweight 90t) 9/11																		
Boom 96m																		
BL/R (m)	30	36	42	48	54	60	66	72	78	84	90	96	102	108	114	BL/R (m)		
22	370*															22		
24	360*	328*	297*													24		
26	350*	320*	292*	263*												26		
28	339*	312*	286*	259*	234*											28		
30	328*	304*	280*	255*	231*	207*	186*									30		
32	311*	295*	273*	250*	228*	205*	185*	164*								32		
34	289*	278*	266*	244*	224*	202*	183*	163*	145*							34		
36	270*	261*	251*	239*	220*	199*	181*	162*	144*	127*						36		
38	252*	244*	237*	227*	215*	196*	179*	160*	143*	127*	111*	98.4*				38		
40	237*	228*	222*	214*	206*	193*	177*	159*	142*	126*	110*	98.0*	85.0*			40		
44		200*	195*	190*	185*	178*	170*	155*	139*	124*	109*	97.1*	84.3*	73.0*	62.2*	44		
48			172*	168*	165*	160*	155*	149*	136*	121*	107*	96.1*	83.3*	72.3*	61.5*	48		
52			151*	149*	147*	144*	141*	135*	130*	119*	105*	94.6*	82.0*	71.3*	60.6*	52		
56				132*	131*	128*	127*	123*	119*	114*	103*	92.8*	80.6*	70.2*	59.6*	56		
60					116*	115*	114*	111*	108*	104*	100*	90.9*	79.0*	68.9*	58.5*	60		
64						103*	102*	101*	99.1*	95.8*	92.3*	88.8*	77.5*	67.6*	57.3*	64		
68						92.4*	91.9*	90.7*	90.0*	87.6*	84.5*	81.9*	75.7*	66.1*	56.0*	68		
72							82.6*	82.0*	81.3*	79.7*	77.0*	75.6*	71.9*	64.6*	54.6*	72		
76								73.9*	73.7*	72.7*	70.7*	69.0*	66.5*	63.2*	53.4*	76		
80								67.0*	66.6*	65.8*	64.7*	63.7*	61.2*	59.3*	52.0*	80		
84									60.5*	60.0*	58.9*	58.1*	56.2*	54.8*	50.5*	84		
88										54.1*	53.5*	53.0*	51.4*	50.5*	48.3*	88		
92										49.6*	48.9*	48.6*	47.1*	46.3*	44.4*	92		
96											44.4*	44.1*	43.0*	42.4*	41.1*	96		
100												40.1*	39.4*	38.8*	37.4*	100		
104													36.6*	36.0*	35.4*	104		
108														32.5*	32.3*	108		
112															29.3*	112		
116																25.8*	116	
120																	23.4*	120

Unit: t

Load chart of LJDB Configuration

Load chart -LJDB (Superlift radius 30m, Superlift counterweight 550t, Rear counterweight 250t, Carbody counterweight 90t) 10/11																
Boom 102m																
BL/R (m)	30	36	42	48	54	60	66	72	78	84	90	96	102	108	114	BL/R (m)
22	328*															22
24	320*	291*														24
26	311*	285*	260*	234*												26
28	302*	278*	255*	231*	210*											28
30	292*	270*	249*	227*	207*	186*										30
32	283*	262*	243*	223*	204*	184*	166*	148*								32
34	270*	254*	237*	218*	201*	181*	165*	147*	131*							34
36	252*	243*	230*	213*	197*	179*	163*	146*	131*	115*						36
38	236*	228*	221*	207*	193*	176*	161*	144*	130*	115*	101*					38
40	222*	213*	207*	199*	188*	172*	158*	143*	128*	114*	100*	89.2*	77.3*			40
44		187*	182*	178*	172*	165*	153*	139*	126*	112*	99.2*	88.3*	76.6*	66.5*	56.4*	44
48			162*	158*	155*	149*	144*	134*	122*	109*	97.3*	87.0*	75.6*	65.7*	55.8*	48
52			144*	140*	137*	134*	131*	126*	119*	106*	95.2*	85.4*	74.3*	64.8*	55.0*	52
56				125*	122*	120*	118*	115*	111*	104*	92.8*	83.7*	72.9*	63.7*	54.0*	56
60					110*	108*	107*	104*	101*	97.2*	90.3*	81.7*	71.3*	62.4*	52.9*	60
64					98.8*	97.3*	95.8*	94.2*	92.1*	89.2*	85.2*	79.6*	69.7*	61.0*	51.7*	64
68						86.7*	86.6*	85.0*	83.6*	81.5*	78.1*	76.2*	67.9*	59.5*	50.5*	68
72							78.2*	77.0*	76.4*	74.1*	71.9*	69.8*	66.0*	58.1*	49.2*	72
76								69.5*	69.3*	67.2*	65.6*	64.0*	61.6*	56.6*	47.9*	76
80									62.9*	62.7*	61.0*	59.5*	58.6*	56.3*	54.7*	80
84										56.6*	55.9*	54.2*	53.7*	52.0*	50.7*	84
88											50.9*	49.6*	49.0*	47.4*	46.4*	88
92												45.3*	44.6*	43.4*	42.7*	92
96													40.9*	40.7*	39.5*	96
100														37.1*	36.2*	100
104															33.8*	104
108																108
112																112
116																116
120																120

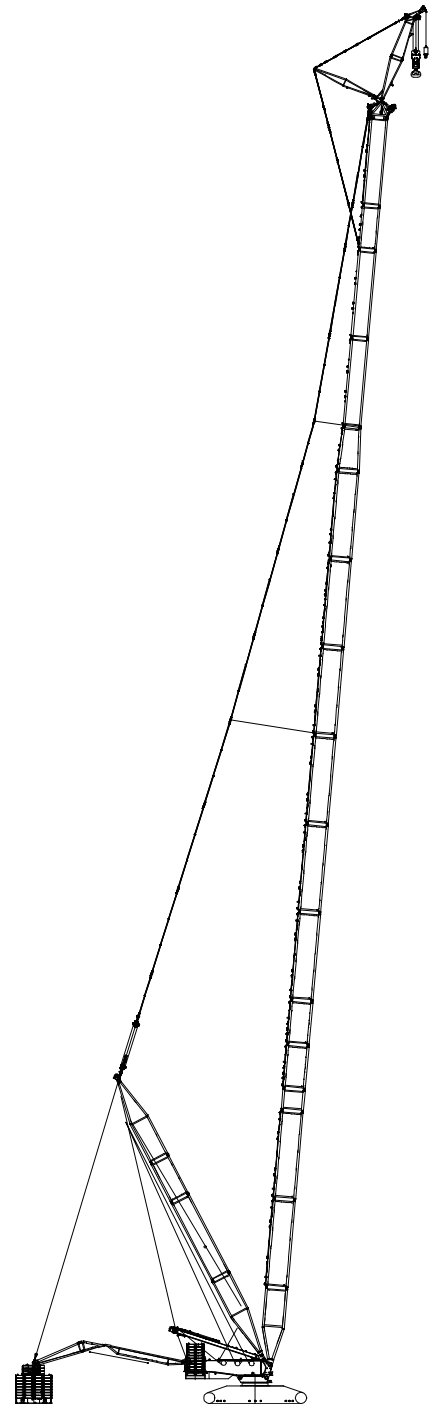
Load chart of LJDB Configuration

Load chart -LJDB (Superlift radius 30m, Superlift counterweight 550t, Rear counterweight 250t, Carbody counterweight 90t) 11/11																
Boom 108m																
BL/R (m)	30	36	42	48	54	60	66	72	78	84	90	96	102	108	114	BL/R (m)
22	294*															22
24	288*	262*														24
26	280*	257*	235*													26
28	272*	250*	230*	209*	190*											28
30	263*	243*	225*	205*	187*	169*										30
32	255*	236*	219*	201*	184*	167*	151*									32
34	246*	229*	214*	197*	181*	164*	150*	134*								34
36	238*	222*	208*	192*	177*	162*	148*	132*	119*	105*						36
38	223*	214*	202*	187*	174*	159*	145*	131*	118*	104*	92.2*					38
40	209*	201*	195*	182*	170*	156*	143*	129*	117*	104*	91.7*	81.4*				40
44		177*	173*	166*	161*	149*	138*	125*	114*	102*	90.2*	80.4*	69.7*	60.5*	51.2*	44
48			153*	149*	145*	140*	133*	121*	111*	99.5*	88.4*	79.1*	68.7*	59.8*	50.6*	48
52			135*	133*	130*	126*	122*	116*	107*	96.7*	86.2*	77.4*	67.4*	58.8*	49.8*	52
56				118*	116*	113*	110*	107*	103*	93.7*	83.8*	75.5*	65.9*	57.7*	48.8*	56
60					103*	101*	100*	97.9*	95.1*	90.5*	81.2*	73.7*	64.3*	56.4*	47.7*	60
64					93.3*	91.5*	90.4*	88.2*	86.2*	83.2*	78.5*	71.5*	62.6*	55.0*	46.5*	64
68						82.2*	81.8*	80.1*	78.8*	76.0*	72.9*	69.2*	60.8*	53.4*	45.4*	68
72							73.6*	72.1*	71.2*	69.1*	66.8*	65.1*	58.8*	52.0*	44.0*	72
76							66.6*	65.2*	64.4*	63.0*	60.9*	59.6*	56.8*	50.3*	42.6*	76
80								59.4*	58.7*	57.3*	55.6*	54.5*	52.1*	48.7*	41.2*	80
84									53.5*	52.0*	50.6*	49.9*	48.1*	46.9*	39.8*	84
88										47.4*	46.0*	45.5*	44.0*	42.7*	38.3*	88
92										43.2*	42.2*	41.3*	40.2*	39.2*	36.9*	92
96											38.1*	37.8*	36.6*	35.9*	34.1*	96
100												34.4*	33.2*	32.8*	31.3*	100
104													31.0*	30.0*	29.8*	104
108														27.6*	27.0*	108
112															24.4*	112
116															22.1*	116
120															19.0*	120

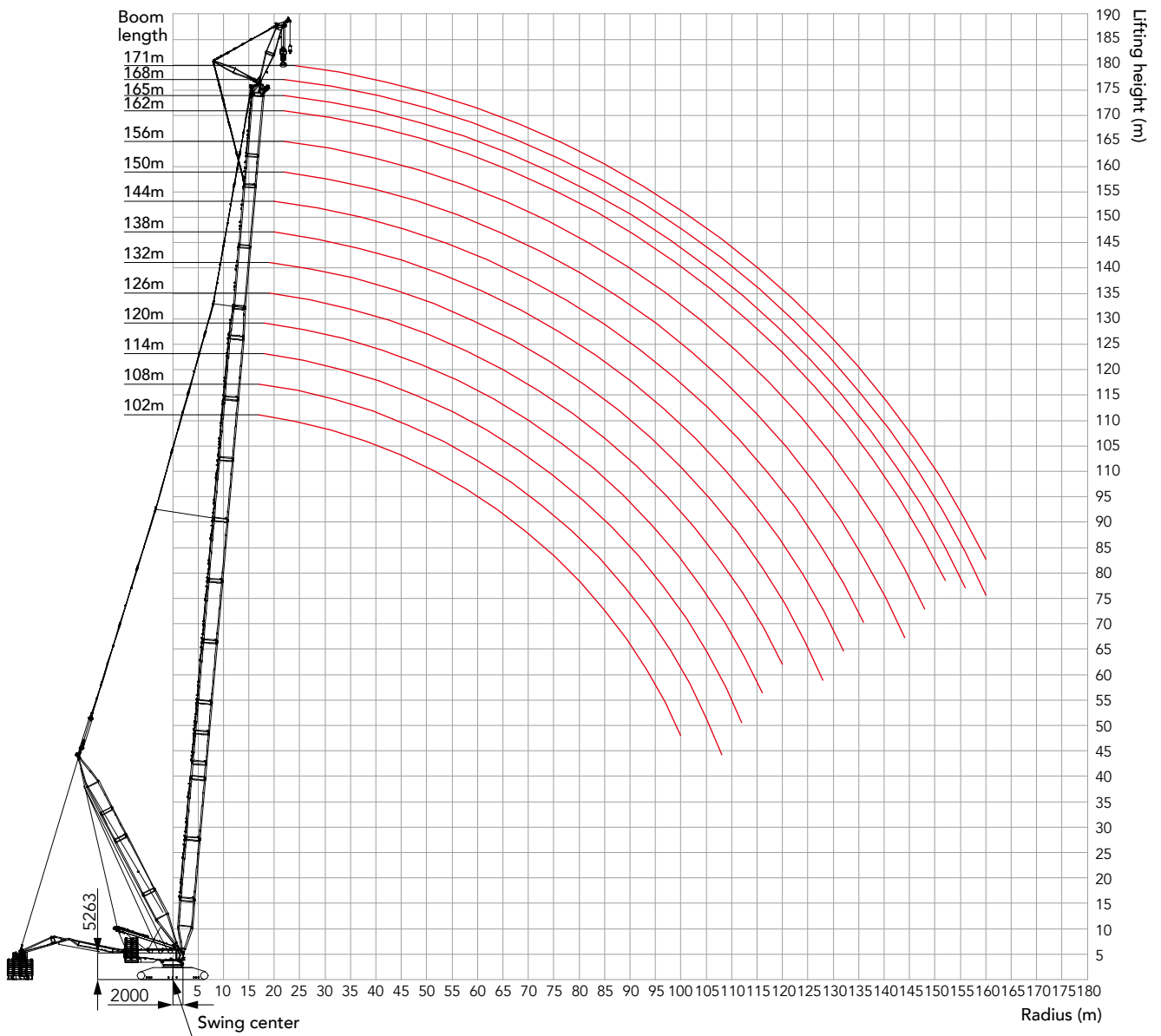
Combination of HJFJDB configuration

Boom								
Boom length(m)	Boom insert					Jib insert		
	3m	6m	12mA	12mB	12mD	6m	12mA	12mB
102	-	2	3	2	-	-	-	-
108	-	1	3	3	-	-	-	-
114	-	2	3	3	-	-	-	-
120	-	1	3	3	1	-	-	-
126	-	2	3	3	1	-	-	-
132	-	2	3	3	1	1	-	-
138	-	2	3	3	1	-	1	-
144	-	2	3	3	1	1	1	-
150	-	2	3	3	1	2	1	-
156	-	2	3	3	1	1	2	-
162	-	2	3	3	1	2	2	-
165	1	2	3	3	1	2	2	-
168	-	2	3	3	1	1	2	1
171	1	2	3	3	1	1	2	1

Note: boom base, 6m tapered insert and 1.5m jib top are must.
For boom length ≥ 138 m, the mid-point suspension cable must be used, otherwise, the boom system may break.



Working range of HJFJDB



Unit: t

Load chart of HJFJDB Configuration

Note:

1. Meet the ISO4305 standard;
2. The superlift counterweight cannot leave the ground in the configurations marked with *;
3. The actual lifting capacity must subtract the weight of hooks, wire rope and other riggings from the rated capacity in the load chart.

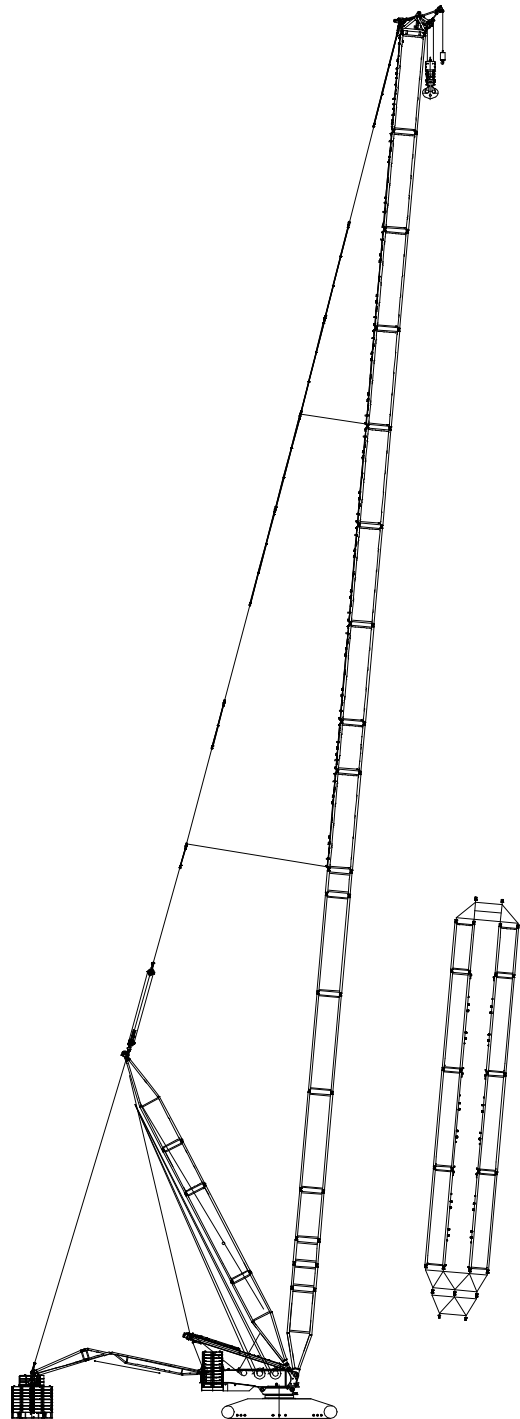
Load chart -HJFJDB(Jib 12m, Boom to jib angle 15°, Superlift radius 30m, Superlift counterweight 550t, Rear counterweight 250t, Carbody counterweight 90t)

Boom 102m~171m															
BL/R(m)	102	108	114	120	126	132	138	144	150	156	162	165	168	171	BL/R(m)
17	250*	249*													17
18	250*	249*	247*	245*											18
19	250*	249*	248*	246*	246*	244*									19
20	250*	250*	248*	248*	246*	244*	242*	219*							20
22	250*	250*	250*	248*	246*	244*	244*	219*	198*	178*	157*	151*	139*		22
24	250*	250*	250*	250*	248*	247*	245*	220*	198*	178*	156*	150*	138*	133*	24
26	250*	250*	250*	250*	249*	247*	244*	220*	198*	177*	155*	149*	137*	132*	26
28	250*	250*	250*	250*	250*	250*	245*	220*	198*	176*	154*	148*	136*	131*	28
30	250*	250*	250*	250*	250*	249*	245*	221*	198*	175*	153*	148*	135*	130*	30
32	250*	250*	250*	250*	250*	249*	245*	219*	197*	174*	152*	147*	134*	129*	32
34	249*	250*	249*	248*	248*	247*	243*	219*	196*	173*	151*	146*	133*	128*	34
36	243*	246*	247*	246*	245*	244*	242*	218*	196*	172*	150*	145*	132*	127*	36
38	237*	241*	244*	243*	243*	242*	241*	216*	195*	171*	149*	144*	131*	126*	38
40	231*	236*	239*	240*	242*	241*	239*	212*	194*	170*	148*	143*	130*	125*	40
44	221*	225*	227*	231*	233*	237*	235*	203*	192*	168*	147*	141*	128*	123*	44
48	212*	215*	219*	222*	223*	235*	232*	196*	184*	166*	144*	139*	126*	121*	48
52	202*	206*	209*	212*	214*	226*	229*	189*	178*	160*	142*	137*	124*	119*	52
56	193*	198*	201*	205*	207*	218*	227*	182*	171*	154*	140*	135*	121*	117*	56
60	186*	190*	195*	197*	200*	211*	218*	177*	165*	149*	134*	132*	119*	115*	60
64	180*	183*	187*	190*	192*	204*	211*	171*	160*	144*	130*	130*	117*	113*	64
68	173*	177*	180*	184*	187*	198*	205*	166*	155*	139*	126*	128*	113*	111*	68
72	168*	172*	175*	178*	181*	192*	199	162*	150*	135*	121*	126*	109*	108*	72
76	163*	166*	170*	173*	176*	186	194	157*	147*	131*	118*	122*	106*	106*	76
80	158*	162*	165*	167*	170	180	180	154*	142*	128*	114*	119*	102*	104*	80
84	153*	157*	160	163	165	168	168	151	139*	125*	111*	116*	100*	102*	84
88	150*	152	156	159	158	156	156	147	136*	122*	109*	112*	97.4*	100*	88
92	145	149	151	150	147	146	146	144	133	119*	106*	110*	94.9*	98.4*	92
96	141	144	141	141	138	137	137	135	131	116*	103*	108*	92.4*	96.5*	96
100	137	135	132	132	129	128	128	127	125	114	101*	105*	90.5*	94.0*	100
104		127	124	124	121	120	120	119	117	112	99.8*	103	88.6*	92.2*	104
108		120	117	117	114	113	113	111	110	109	97.9	101	86.8*	90.3*	108
112			110	110	107	106	106	104	103	103	96.7	99.8	85.3*	89	112
116				103	101	99.8	99.8	98.4	97	96.7	95.1	93.4	84.1	87.7	116
120					94.9	93.7	93.8	92.4	91	90.7	89.1	87.4	82.9	85.9	120
124						88.1	88.1	86.8	85.4	85.1	83.5	81.9	81.7	82	124
128						82.7	82.8	81.5	80.1	79.8	78.3	76.6	78.4	76.8	128
132							77.8	76.5	75.1	74.9	73.3	71.7	73.5	71.8	132
136								71.8	70.4	70.2	68.6	67	68.8	67.2	136
140									66	65.8	64.2	62.6	64.4	62.8	140
144									61.8	61.6	60.1	58.4	60.3	58.6	144
148										57.6	56.1	54.5	56.3	54.7	148
152											52.3	50.7	52.6	50.9	152
156												47.1	49	47.4	156
160													45.6	44	160

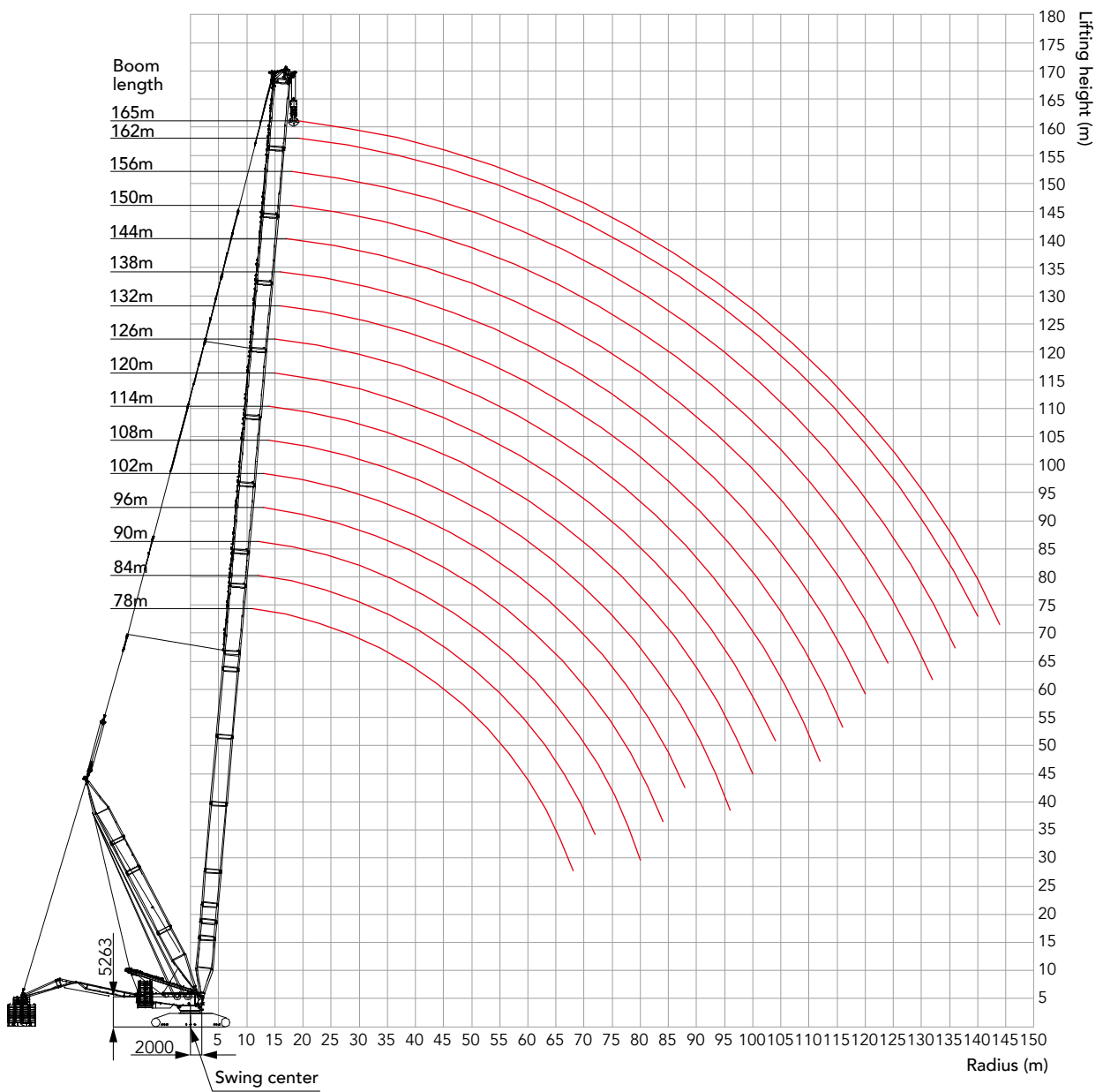
Combination of HDB-SY4 configuration

Combination of HDB-SY4 configuration					
Boom length(m)	Boom insert				
	3m	6m	12mA	12mB	12mD
78	1	-	-	-	-
84	1	1	-	-	-
90	1	-	1	-	-
96	1	1	1	-	-
102	1	-	2	-	-
108	1	1	2	-	-
114	1	-	3	-	-
120	1	1	3	-	-
126	1	-	3	1	-
132	1	1	3	1	-
138	1	-	3	2	-
144	1	1	3	2	-
150	1	-	3	3	-
156	1	1	3	3	-
162	1	-	3	3	1
165	-	1	3	3	1

Note: boom base 10.5m, 12m transition boom insert, 1.5m boom top and SY4 are mandatory; SY4 includes 3m transition insert SY4A, SY4B, SY4C, 2 sections of 6m jib, 2 sections of 12mA jib, 4 sections of 12mB jib. This boom configuration above shall use mid-point suspension cable when it is out of 120m.



Working range of HDB-SY4



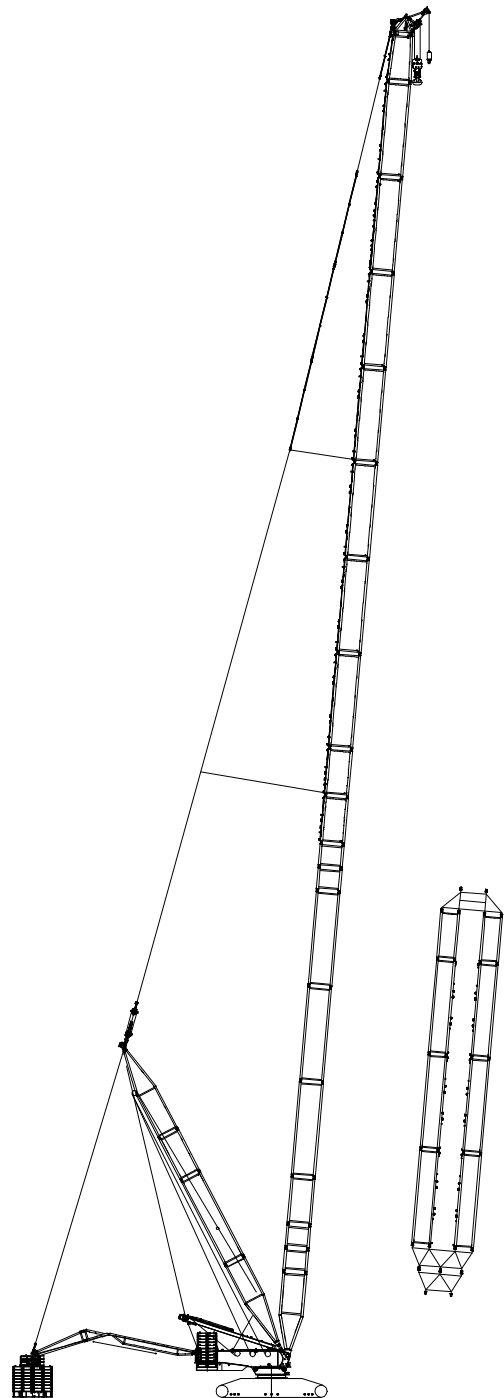
Load chart of HDB-SY4 Configuration

Load chart -HDB-SY4 (Superlift radius 30m, Superlift counterweight 550t, Rear counterweight 250t, Carbody counterweight 90t)																	
Boom 78m~165m																	
BL/R(m)	78	84	90	96	102	108	114	120	126	132	138	144	150	156	162	165	BL/R(m)
11	899*																11
12	899*	818*	777*														12
13	899*	818*	777*	735*	652*												13
14	899*	818*	777*	735*	652*	652*	610*										14
15	899*	818*	777*	735*	652*	652*	610*	568*	525*								15
16	899*	818*	777*	735*	652*	652*	610*	568*	525*	512*	466*						16
17	899*	818*	777*	735*	652*	652*	610*	568*	525*	513*	464*	415*					17
18	899*	818*	777*	735*	694*	652*	610*	568*	525*	515*	462*	415*	373*	337*			18
19	899*	818*	777*	735*	694*	652*	610*	568*	525*	514*	462*	415*	373*	337*	302*	284*	19
20	899*	818*	777*	735*	694*	652*	610*	568*	525*	513*	463*	415*	373*	337*	301*	283*	20
22	862	818*	777*	735*	694*	652*	610*	568*	525*	514*	461*	416*	373*	337*	300*	281*	22
24	787	784	777	735*	694*	652*	610*	568*	525*	515*	462*	416*	373*	337*	298*	279*	24
26	723	720	717	714	694	652*	610*	561*	525*	503*	462*	416*	373*	335*	295*	277*	26
28	667	665	662	659	644	624	605*	539*	525*	482*	462*	416*	372*	333*	293*	275*	28
30	617	615	613	610	601	583	565	517*	504*	461*	462*	415*	371*	331*	291*	273*	30
32	573	570	568	565	563	546	530	494*	487*	443*	453*	414*	368*	328*	289*	272*	32
34	534	531	529	526	524	514	499	475*	467*	425*	437*	400*	365*	326*	286*	270*	34
36	499	497	494	492	489	486	471	456	444	407*	418*	385*	358*	323*	284*	268*	36
38	468	466	463	461	458	455	453	432	420	391*	396*	370*	345*	320*	281*	265*	38
40	440	438	436	433	431	428	425	410	399	376*	376*	355*	329*	317*	279*	263*	40
44	393	390	388	385	383	380	377	374	372	349	341	329*	303*	311*	273*	258*	44
48	353	351	348	346	343	340	338	335	333	324	311	301	281*	283*	267*	254*	48
52	320	317	315	312	310	307	304	301	299	296	294	285	260	259	254	248*	52
56	291	289	287	284	281	278	276	273	271	268	266	262	243	238	233	243	56
60	267	264	262	259	257	254	251	248	246	243	241	238	228	232	229	226	60
64	245	242	240	237	235	232	230	227	225	221	219	216	214	211	211	209	64
68	226	223	221	218	216	213	211	208	206	202	200	197	195	192	192	190	68
72		206	204	201	199	196	194	191	189	186	183	180	178	175	175	173	72
76			189	186	184	181	179	176	174	171	168	165	163	160	160	158	76
80			175	173	170	168	165	162	160	157	155	152	149	146	146	145	80
84				160	158	155	153	150	148	145	143	139	137	134	134	132	84
88					147	144	142	139	137	133	131	128	126	123	123	121	88
92						134	131	128	126	123	121	118	116	113	113	111	92
96						124	122	119	117	114	112	109	106	103	103	102	96
100							113	110	108	105	103	100	98.3	95.1	95.3	93.7	100
104								102	100	97.8	95.7	92.6	90.3	87.1	87.3	85.8	104
108									93.4	90.4	88.3	85.2	83	79.8	80	78.5	108
112									86.5	83.5	81.5	78.4	76.1	73	73.2	71.6	112
116										77.1	75	72	69.8	66.6	66.8	65.3	116
120											69	66	63.8	60.6	60.9	59.3	120
124												60.4	58.2	55	55.3	53.8	124
128													52.9	49.8	50.1	48.5	128
132													48	44.9	45.1	43.6	132
136														40.2	40.5	39	136
140															36.1	34.6	140
144																30.4	144

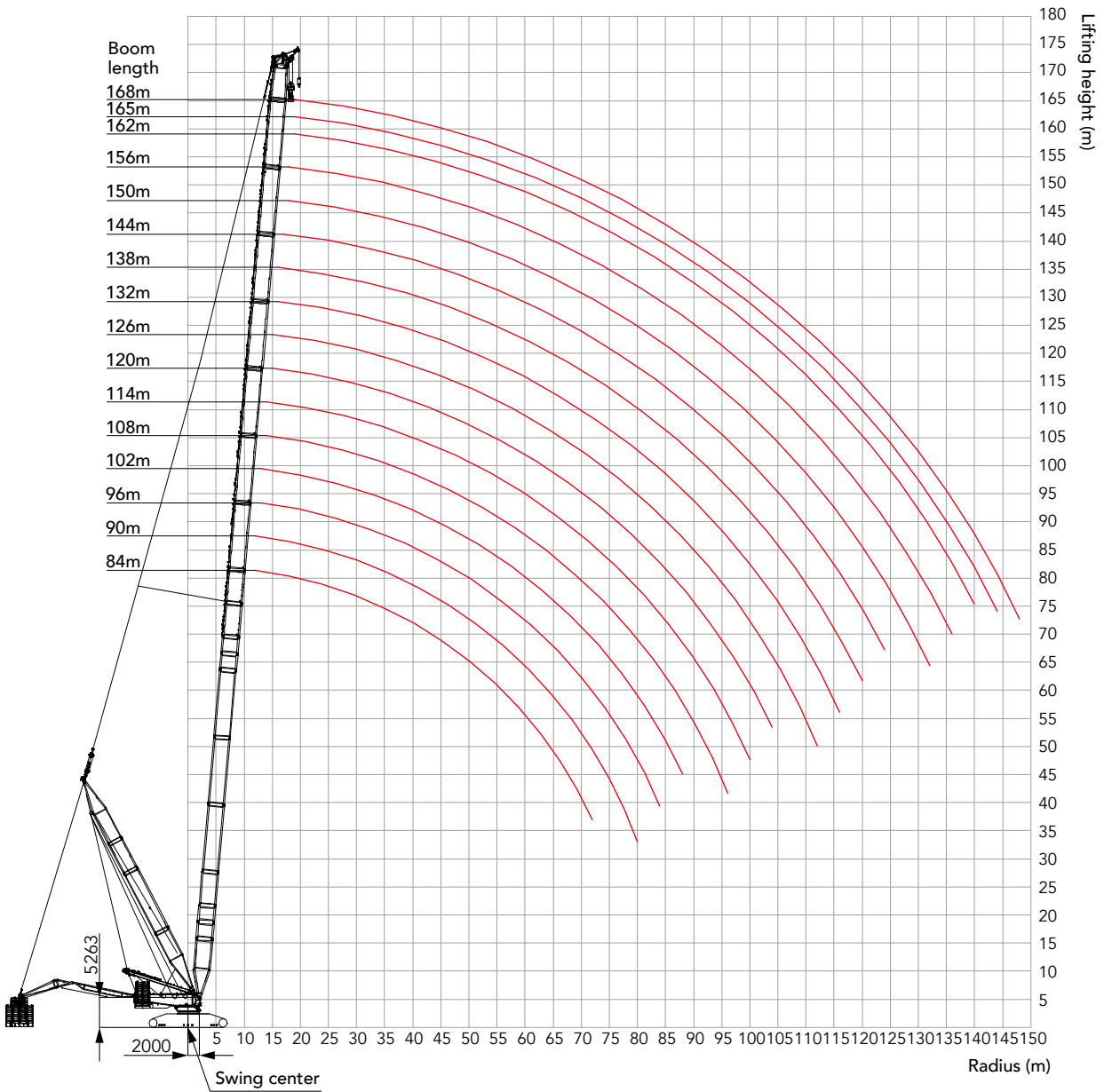
Combination of HJDB-SY4 configuration

Combination of HJDB-SY4 configuration					
Boom length(m)	Boom insert				
	3m	6m	12mA	12mB	12mD
84	1	-	-	-	-
90	1	1	-	-	-
96	1	-	1	-	-
102	1	1	1	-	-
108	1	-	2	-	-
114	1	1	2	-	-
120	1	-	3	-	-
126	1	1	3	-	-
132	1	-	3	1	-
138	1	1	3	1	-
144	1	-	3	2	-
150	1	1	3	2	-
156	1	2	3	2	-
162	1	1	3	3	-
165	-	2	2	3	1
168	1	2	2	3	1

Note: boom base 10.5m, 12m transition boom insert, 1.5m boom top and SY4 are mandatory; SY4 includes 3m transition insert SY4A, SY4B, SY4C, 2 sections of 6m jib, 2 sections of 12mA jib, 4 sections of 12mB jib. This boom configuration above shall use mid-point suspension cable when it is out of 120m.



Working range of HJDB-SY4



Unit: t

Load chart of HJDB-SY4 Configuration

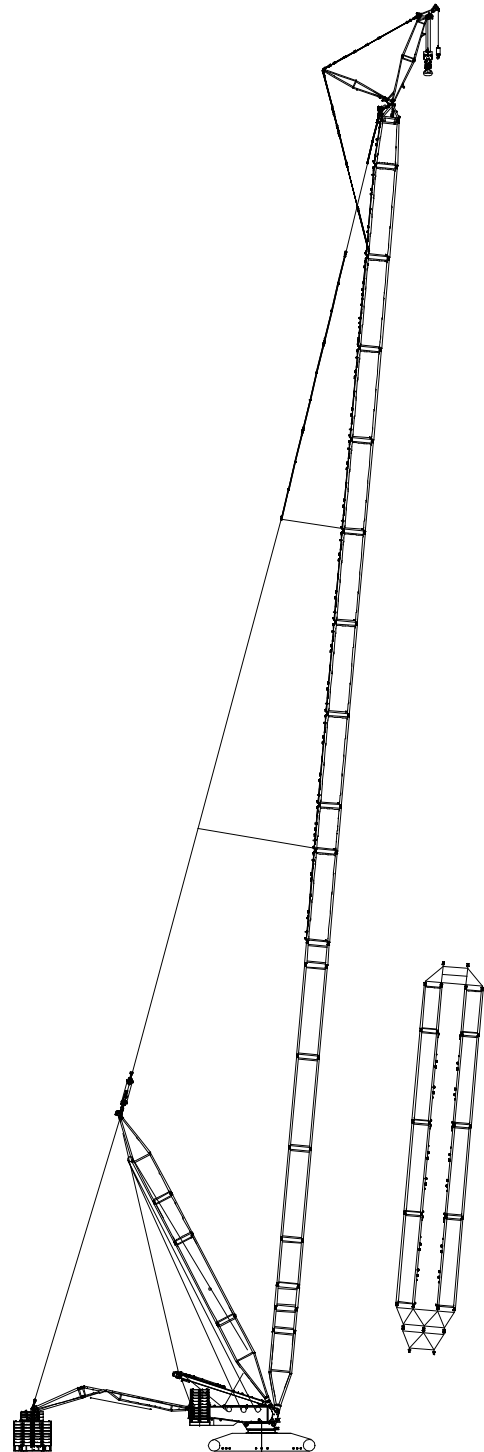
Load chart -HJDB-SY4 (Superlift radius 30m, Superlift counterweight 550t, Rear counterweight 250t, Carbody counterweight 90t)																		
Boom 84m~168m																		
BL/R (m)	84	90	96	102	108	114	120	126	132	138	144	150	156	162	165	168	BL/R (m)	
12	650*	650*															12	
13	650*	650*	650*	650*													13	
14	650*	650*	650*	650*	610*	610*											14	
15	650*	650*	650*	650*	650*	610*	568*	525*									15	
16	650*	650*	650*	650*	650*	610*	568*	525*	522*	470*							16	
17	650*	650*	650*	650*	650*	610*	568*	525*	521*	470*	422*						17	
18	650*	650*	650*	650*	650*	610*	568*	525*	521*	471*	422*	381*	344*				18	
19	650*	650*	650*	650*	650*	610*	568*	525*	522*	470*	423*	381*	344*	310*	294*	278*	19	
20	650*	650*	650*	650*	650*	610*	568*	525*	522*	470*	423*	381*	345*	310*	293*	277*	20	
22	650*	650*	650*	650*	650*	610*	568*	525*	523*	470*	423*	381*	345*	310*	292*	275*	22	
24	650*	650*	650*	650*	650*	610*	568*	525*	524*	471*	423*	381*	345*	308*	290*	273*	24	
26	650*	650*	650*	650*	650*	610*	568*	525*	518*	471*	423*	381*	344*	306*	287*	272*	26	
28	650	650	650	650	650	610*	555*	525*	496*	471*	423*	380*	342*	304*	285*	270*	28	
30	622	620	617	615	612	603	533*	521*	475*	471*	422*	379*	340*	302*	283*	268*	30	
32	578	575	573	570	568	565	511*	500*	456*	464*	421*	378*	338*	299*	281*	265*	32	
34	539	536	534	531	529	526	490	483*	438*	450*	413*	375*	335*	297*	278*	263*	34	
36	504	502	499	497	494	491	475	462	419*	431*	398*	367*	333*	294*	276*	261*	36	
38	473	471	469	466	463	460	455	445	404*	414	381*	354*	330*	292*	273*	259*	38	
40	446	443	441	438	436	433	430	427	388*	400	368*	342*	327*	289*	271*	257*	40	
44	398	396	393	390	388	385	382	379	360	368	340	315*	321*	283*	265*	252*	44	
48	359	356	354	351	348	345	343	340	338	335	316	291*	308	277*	260*	247*	48	
52	325	323	320	317	315	312	309	306	304	301	296	271	283	271	254*	242*	52	
56	297	294	292	289	287	284	281	278	276	273	271	254	261	252	247	237	56	
60	272	269	267	264	262	259	256	253	251	248	246	238	240	237	231	231	60	
64	250	248	246	243	240	237	235	232	230	227	224	221	218	216	217	216	64	
68	231	229	227	224	221	218	216	213	211	208	205	202	199	197	198	197	68	
72	214	212	210	207	204	202	199	196	194	191	188	185	182	180	181	180	72	
76		197	195	192	189	186	184	181	179	176	173	170	167	165	166	165	76	
80		183	181	178	176	173	170	167	165	162	160	157	154	151	153	151	80	
84			169	166	163	161	158	155	153	150	148	144	141	139	141	139	84	
88				155	152	149	147	144	142	139	136	133	130	128	129	128	88	
92					142	139	137	134	132	128	126	123	120	118	119	118	92	
96					133	130	127	124	122	119	117	114	111	108	110	109	96	
100						121	119	116	114	111	108	105	102	100	101	100	100	
104							111	108	106	103	100	97.7	94.6	92.2	93.9	92.6	104	
108								100	98.7	95.6	93.5	90.4	87.3	84.9	86.6	85.2	108	
112									93.8	91.8	88.8	86.7	83.5	80.4	78.1	79.8	112	
116										85.4	82.4	80.3	77.1	74.1	71.7	73.4	116	
120											76.4	74.3	71.2	68.1	65.8	67.5	120	
124												68.7	65.6	62.5	60.2	61.9	124	
128													60.3	57.3	55	56.7	128	
132														55.4	52.3	50.5	132	
136															47.7	45.4	136	
140																41	140	
144																38.6	144	
148																	33.4	148

Combination of HJFJDB-SY4 configuration

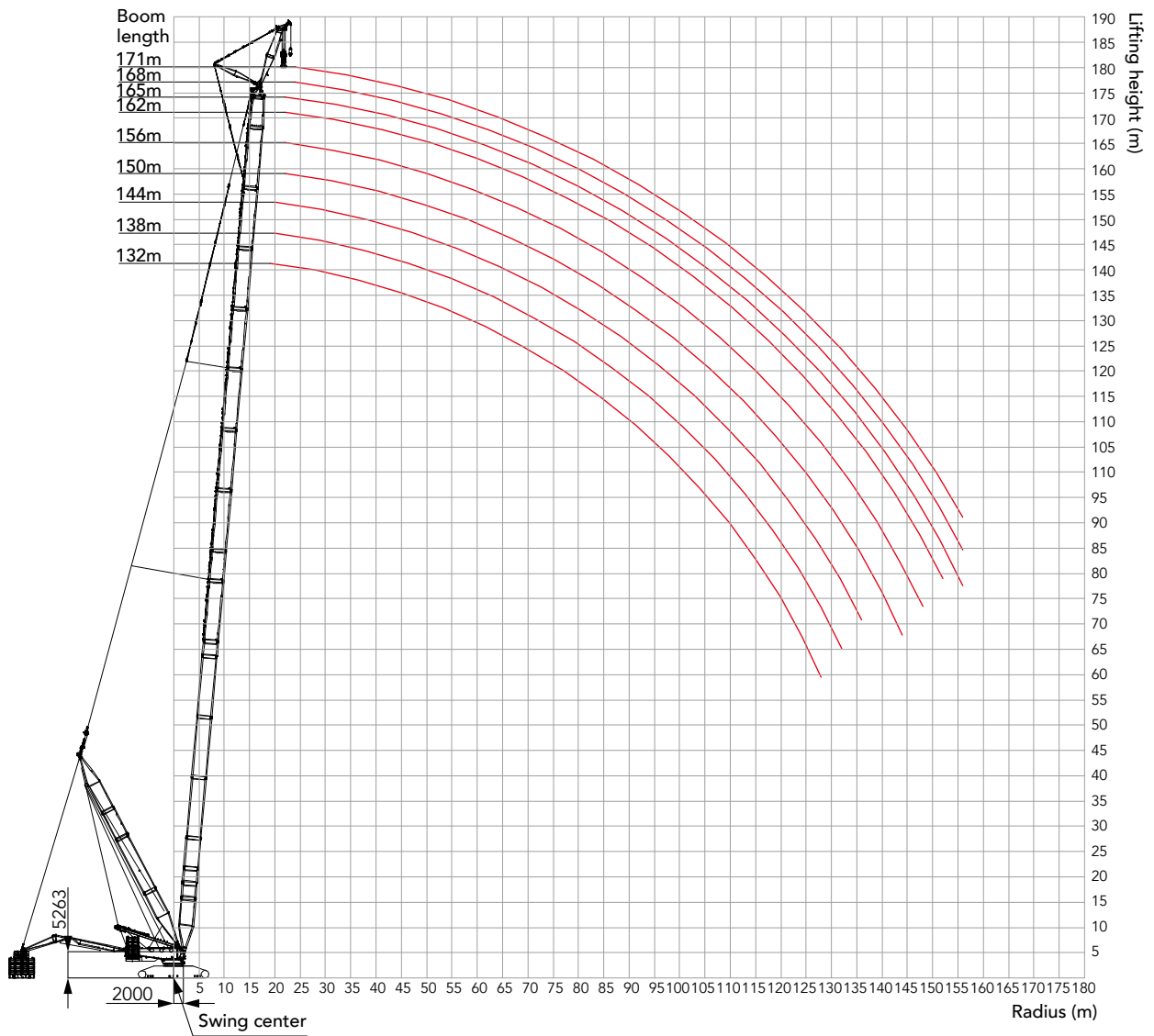
Combination of HJFJDB-SY4 configuration

Boom length(m)	Boom insert				
	3m	6m	12mA	12mB	12mD
132	1	-	3	1	-
138	1	1	3	1	-
144	1	-	3	2	-
150	1	1	3	2	-
156	1	2	3	2	-
162	1	1	3	3	-
165	-	2	2	3	1
168	1	2	2	3	1
171	-	1	3	3	1

Note: boom base 10.5m, 12m transition boom insert, 1.5m boom top, tapered insert and SY4 are mandatory; SY4 includes 3m transition insert SY4A, SY4B, SY4C, 2 sections of 6m jib, 2 sections of 12mA jib, 4 sections of 12mB jib. This boom configuration above shall use mid-point suspension cable.



Working range of HJFJDB-SY4



Load chart of HJFJDB-SY4 Configuration

Load chart -HJFJDB-SY4 (Superlift radius 30m, Superlift counterweight 550t, Rear counterweight 250t, Carbody counterweight 90t)										
Boom 132m~171m										
BL/R (m)	132	138	144	150	156	162	165	168	171	BL/R (m)
20	250*	247*	246*							20
22	250*	248*	247*	246*	243*	242*	231*			22
24	250*	250*	250*	247*	245*	244*	230*	218*	207*	24
26	250*	250*	250*	249*	247*	244*	228*	217*	206*	26
28	250*	250*	250*	250*	247*	242*	227*	215*	205*	28
30	250*	250*	250*	250*	248*	241*	226*	214*	204*	30
32	250*	250*	250*	250*	246*	239*	224*	213*	202*	32
34	250*	250*	250*	248*	245*	238*	222*	211*	201*	34
36	250*	250*	250*	247*	243*	236*	221*	210*	199*	36
38	247*	250*	248*	245*	241*	234*	219*	208*	197*	38
40	243*	245*	245*	246*	239*	232*	217*	206*	196*	40
44	232*	235*	236*	235*	237*	228*	213*	204*	192*	44
48	222*	224*	226*	226*	228*	224*	209*	200*	188*	48
52	215*	216*	217*	218*	221*	219*	205*	196*	184*	52
56	206*	209*	209*	210*	214*	214*	200*	192*	180*	56
60	199*	202*	203*	199*	207*	202*	196*	188*	176*	60
64	193*	194*	196*	189*	199*	190*	189*	184*	172*	64
68	187*	189*	190	179*	192	179*	175*	180*	163*	68
72	181*	183	184	169	183	169	165	172	154*	72
76	176	177	175	161	173	161	156	162	145*	76
80	170	167	165	155	159	153	148	155	138	80
84	158	155	153	147	147	144	142	144	130	84
88	147	144	142	138	135	133	134	133	125	88
92	137	134	131	128	125	123	124	123	119	92
96	127	124	122	119	116	113	115	113	112	96
100	118	115	113	110	107	105	106	105	103	100
104	110	107	105	102	99.4	97.1	98.5	97.1	95.8	104
108	103	100	98.2	95.1	92	89.6	91.1	89.7	88.4	108
112	96.5	93.5	91.3	88.2	85.1	82.7	84.2	82.9	81.5	112
116	90.1	87	84.8	81.8	78.7	76.3	77.8	76.4	75.1	116
120	84	81	78.8	75.7	72.7	70.3	71.8	70.4	69.1	120
124	78.3	75.3	73.2	70.1	67.1	64.7	66.1	64.8	63.5	124
128	73	70	67.9	64.8	61.8	59.4	60.9	59.6	58.2	128
132		65	62.9	59.8	56.8	54.4	55.9	54.6	53.3	132
136			58.1	55.1	52.1	49.7	51.2	49.9	48.6	136
140				50.6	47.6	45.3	46.8	45.5	44.2	140
144				46.4	43.4	41.1	42.6	41.3	40	144
148					39.4	37.1	38.6	37.3	36	148
152						33.3	34.8	33.5	32.3	152
156							31.2	29.9	28.7	156
160								26.5	25.2	160



Zhejiang Sany Equipment Co.,LTD

SANY Crawler Crane Industrial Park, No. 2188 Daishan Road, Wuxing District, Huzhou City,
Zhejiang Province, P. R. China Zip 313028
Consulting sanycrane@sanygroup.com (Crane BU) / crd@sany.com.cn (IHQ)
After-sales Service 0086-400 6098 318

Reminder:

Any change in the technical parameters and configuration due to product modification or upgrade may occur without prior notice.
The machine in the picture may include additional equipment. This brochure is for reference only, and goods in kind shall prevail.
Copyright at SANY. No part of this brochure may be copied or used for any purpose without written approval from SANY.

© Edited in January 2023

